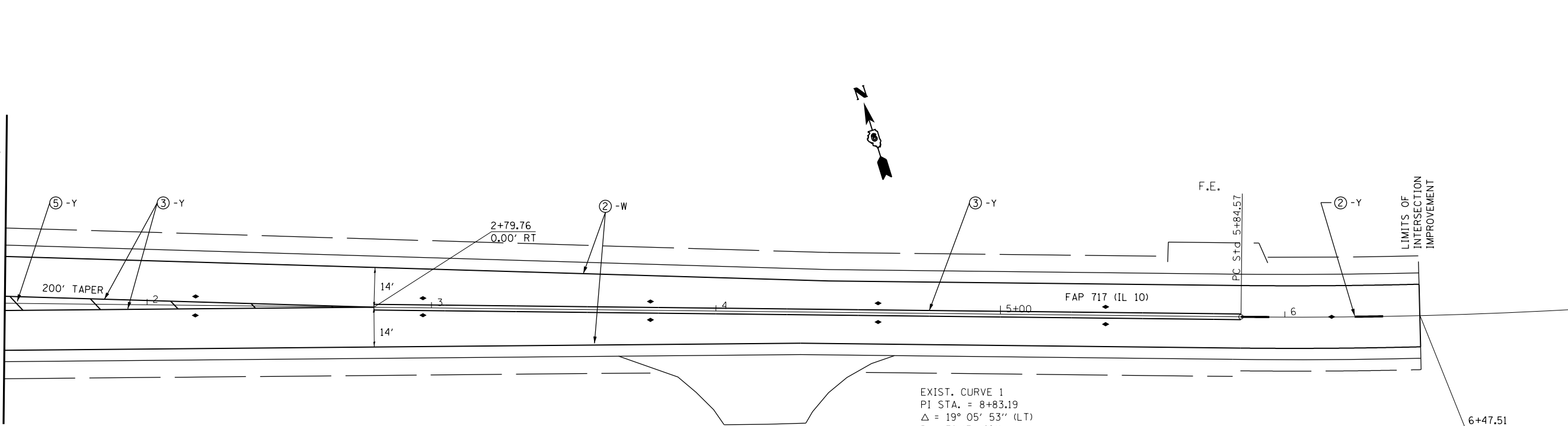


MATCHLINE STA 1+50



EXIST. CURVE 1
 PI STA. = 8+83.19
 Δ = 19° 05' 53" (LT)
 D = 3° 13' 40"
 R = 1,775.15'
 T = 298.62'
 L = 591.70'
 E = 24.94'
 e = -----
 T.R. = -----
 S.E. RUN = -----
 P.C. STA. = 5+84.57
 P.T. STA. = 11+76.27

PAVEMENT MARKING LEGEND	
①	PREFORMED PLASTIC PAVEMENT MARKING, TYPE B, INLAID - LINE 24"
②	URETHANE PAVEMENT MARKING - LINE 5"
③	URETHANE PAVEMENT MARKING - LINE 5" (DOUBLE YELLOW LINES @ 13" CENTERS)
④	URETHANE PAVEMENT MARKING - LINE 8"
⑤	URETHANE PAVEMENT MARKING - LINE 12"
▷	RAISED REFLECTIVE PAVEMENT MARKER (ONE-WAY CRYSTAL)
▶	RAISED REFLECTIVE PAVEMENT MARKER (ONE -WAY AMBER)
◆	RAISED REFLECTIVE PAVEMENT MARKER (TWO -WAY AMBER)
⊗-W	PAVEMENT MARKING, WHITE
⊗-Y	PAVEMENT MARKING, YELLOW

IL 10 EAST LEG

• - ((E)RS-4, (G)RS-6, I & (F)RS-3, I-1)
 •• - MASON, MENARD

FILE NAME =	USER NAME = sparksgw	DESIGNED -	REVISED -
et:\pw\work\p\dot\sparksgw\0283522\0672\F04-pvmtmark.dgn		DRAWN -	REVISED -
	PLOT SCALE = 40.0000' / in.	CHECKED -	REVISED -
	PLOT DATE = Feb-27-2012 02:05:45PM	DATE -	REVISED -

**STATE OF ILLINOIS
 DEPARTMENT OF TRANSPORTATION**

PAVEMENT MARKING DETAILS		EAST LEG OF IL 10	
SCALE:	SHEET 5 OF 5 SHEETS	STA.	TO STA.

F.A.P. RTE.	SECTION	COUNTY	TOTAL SHEETS	SHEET NO.
658	•	••	106	71
CONTRACT NO. 72F04				
ILLINOIS FED. AID PROJECT				