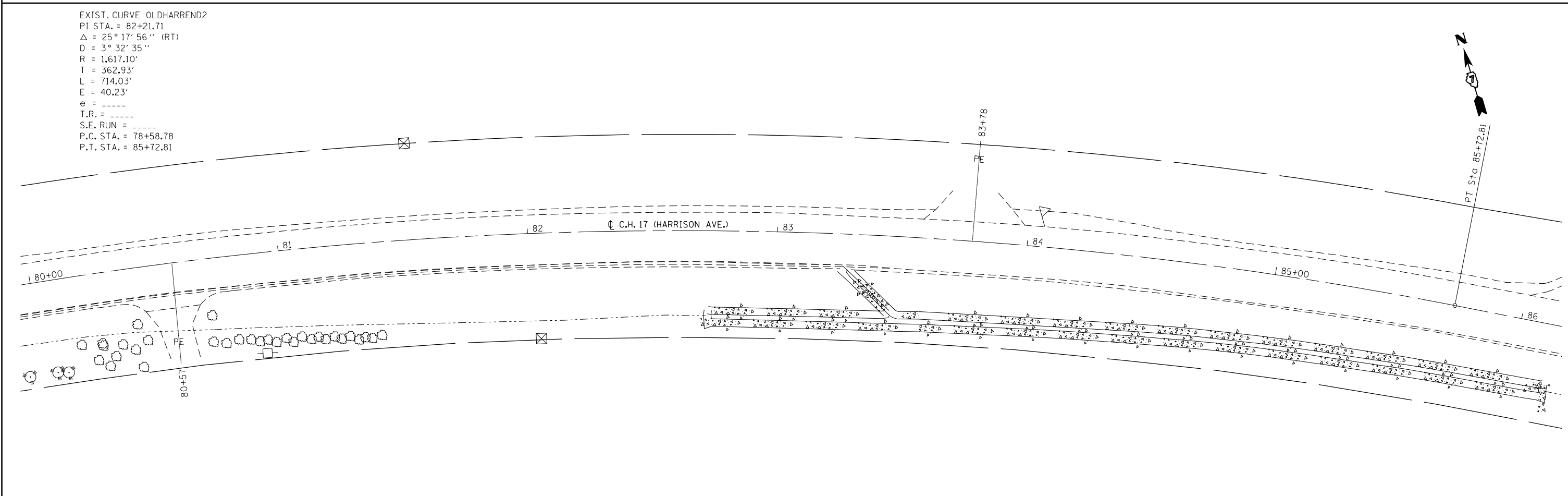


EXIST. CURVE OLDHARREND2  
 PI STA. = 82+21.71  
 $\Delta = 25^\circ 17' 56''$  (RT)  
 D =  $3^\circ 32' 35''$   
 R = 1,617.10'  
 T = 362.93'  
 L = 714.03'  
 E = 40.23'  
 e = -----  
 T.R. = -----  
 S.E. RUN = -----  
 P.C. STA. = 78+58.78  
 P.T. STA. = 85+72.81



FILE NAME =	USER NAME = steffenmk	DESIGNED -	REVISED -
et:\pw\work\p\midot\steffenmk\d0283756\074465-sht-plan.dgn		DRAWN -	REVISED -
	PLOT SCALE = 40.0000' / in.	CHECKED -	REVISED -
	PLOT DATE = 1/17/2012	DATE -	REVISED -

**STATE OF ILLINOIS  
 DEPARTMENT OF TRANSPORTATION**

**PLAN**

SCALE: 20 SHEET 6 OF 7 SHEETS STA. 74+00 TO STA. 86+00

F.A.U. RTE.	SECTION	COUNTY	TOTAL SHEETS	SHEET NO.
7623	(39MFT)RS-1	COLES	31	19
CONTRACT NO. 74465				
ILLINOIS FED. AID PROJECT				