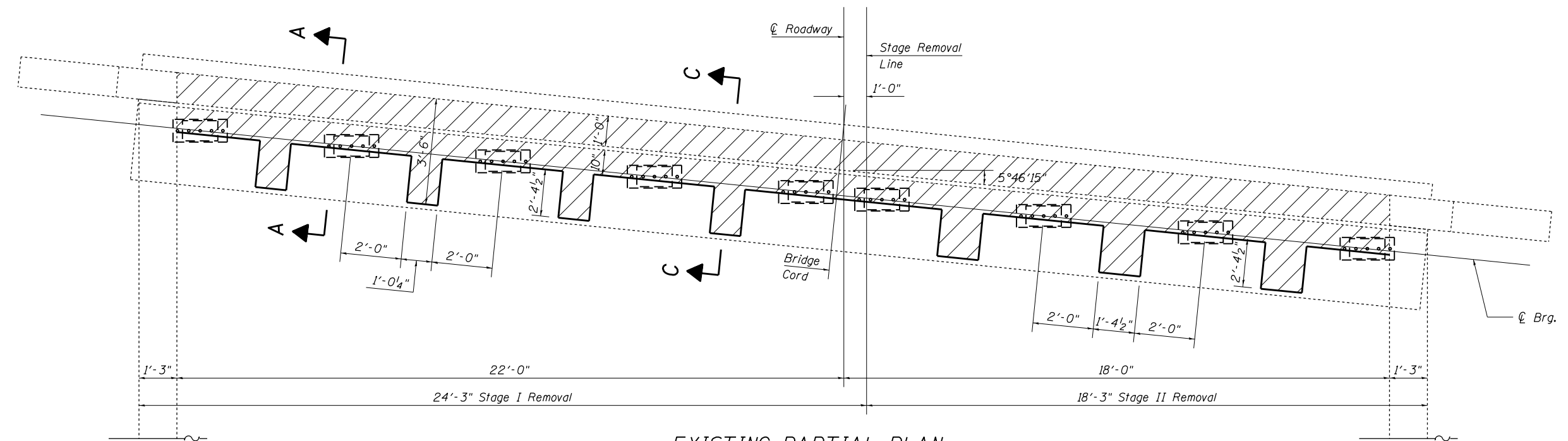
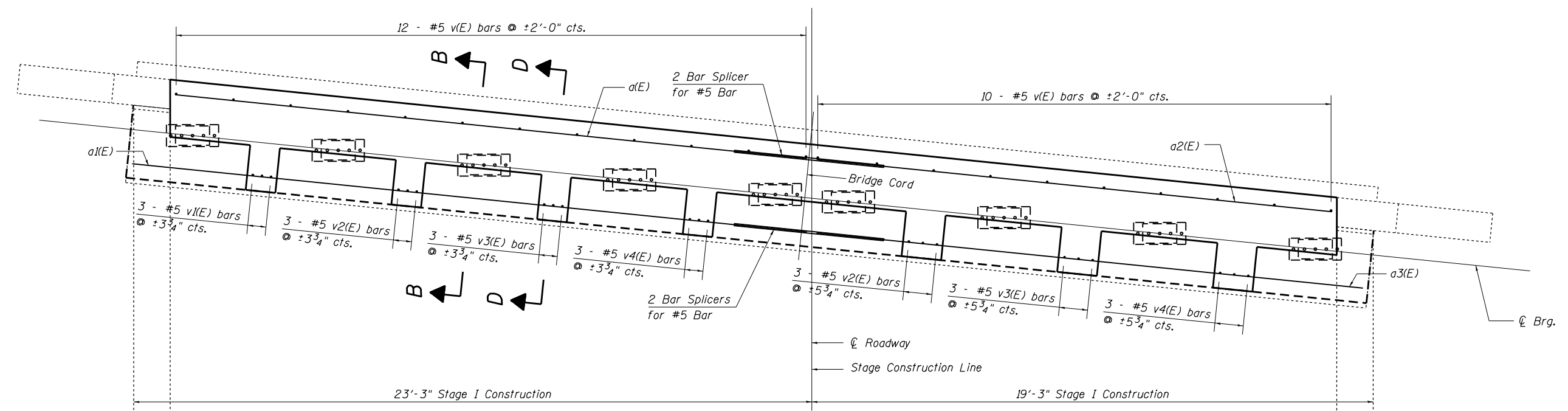


Hatching indicates removal.



**EXISTING PARTIAL PLAN**  
(West Abutment shown; East Abutment similar)

For Section A-A, B-B, C-C and D-D, see Sheet 5 of 9.



**PROPOSED PARTIAL PLAN**  
(West Abutment shown; East Abutment similar)

FILE NAME = c:\pw\work\p\dot\stefenmk\d0270599\074536-sht-brdetails-0960039.dgn	USER NAME = stefenmk	DESIGNED - KLB	REVISED -	<b>STATE OF ILLINOIS DEPARTMENT OF TRANSPORTATION</b>	<b>EXPANSION JOINT ELIMINATION DETAILS SN. 096-0039</b>			F.A.I. RTE. = 64	SECTION =	COUNTY = Wayne	TOTAL SHEETS = 22	SHEET NO. = 16
	PLOT SCALE = 40.0000' / in.	CHECKED - MEA	REVISED -					CONTRACT NO. 74536	ILLINOIS FED. AID PROJECT			
PLOT DATE = 1/25/2012	DATE = 10/31/11	REVISED -	REVISED -	SCALE:	SHEET NO. 3 OF 9 SHEETS	STA. TO STA.	* D7 BRIDGE REPAIRS 2012-2					