

STATE OF ILLINOIS
 DEPARTMENT OF TRANSPORTATION
 DIVISION OF HIGHWAYS

**PROPOSED
 HIGHWAY PLANS**

F.A.P. ROUTE 828 (MONTROSE BLCKTP)
 SECTION 12 RS-1
 PROJECT ACF-0828(022)
 RESURFACING (3P)
 EFFINGHAM COUNTY

C-97-043-12

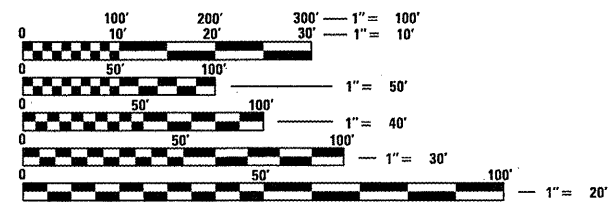
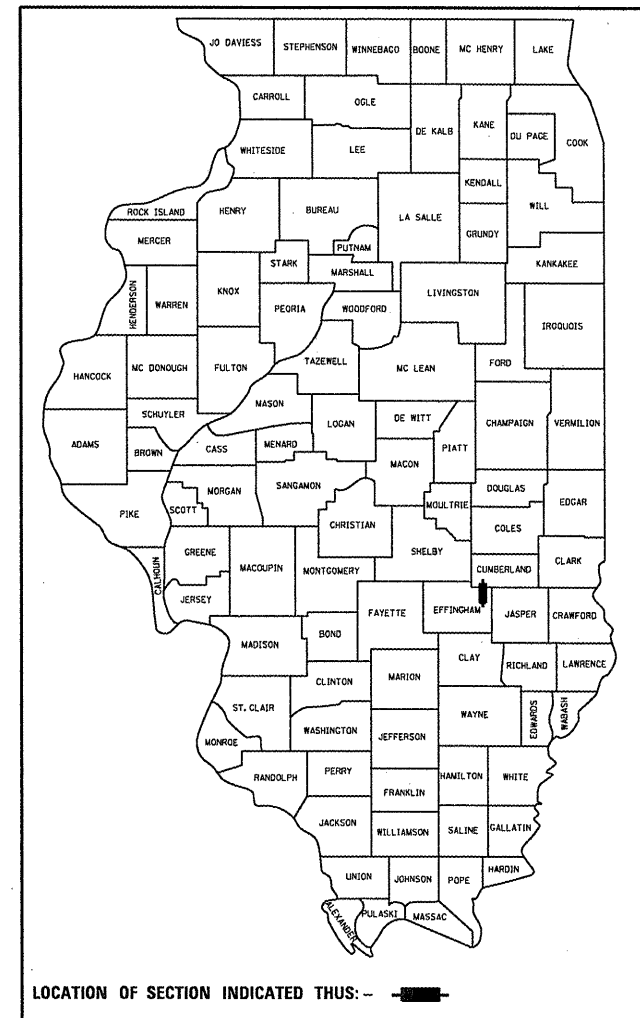
R 7 E

FOR INDEX OF SHEETS, SEE SHEET NO. 2

ADT = 2975 (2008)

F.A.P. RTE.	SECTION	COUNTY	TOTAL SHEETS	SHEET NO.
828	12 RS-1	EFFINGHAM	37	1
		ILLINOIS	CONTRACT NO. 74566	

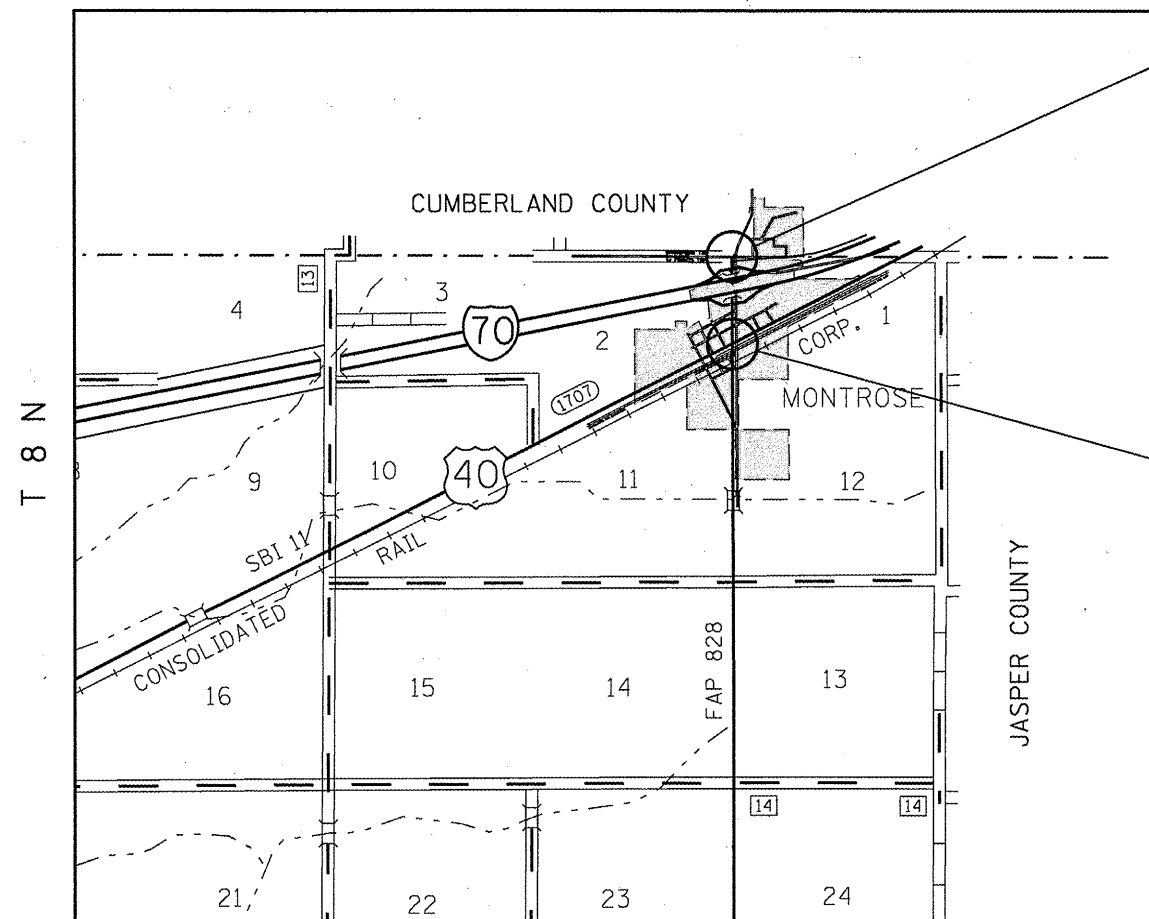
D-97-028-12



FULL SIZE PLANS HAVE BEEN PREPARED USING STANDARD ENGINEERING SCALES. REDUCED SIZED PLANS WILL NOT CONFORM TO STANDARD SCALES. IN MAKING MEASUREMENTS ON REDUCED PLANS, THE ABOVE SCALES MAY BE USED.

J.U.L.I.E.
 JOINT UTILITY LOCATION INFORMATION FOR EXCAVATION
 1-800-892-0123
 OR 811

PROJECT ENGINEER: TOM RONAN
 PROJECT MANAGER: ROSS BIERMAN
 PHONE: (217)-342-8320
 CONTRACT NO. 74566



FAP ROUTE 828
 SECTION 12 RS-1
 EFFINGHAM COUNTY
 BEGINS STA. 486 + 13

FAP ROUTE 828
 SECTION 12 RS-1
 EFFINGHAM COUNTY
 ENDS STA. 507 + 25

GROSS LENGTH = 2112 FT. = 0.4 MILE
 NET LENGTH = 2112 FT. = 0.4 MILE

STATE OF ILLINOIS
 DEPARTMENT OF TRANSPORTATION
 DIVISION OF HIGHWAYS

SUBMITTED Jan 27 20 12
John D. Baranzelli, P.E.
 DEPUTY DIRECTOR OF HIGHWAYS, REGION ENGINEER

March 23 20 12
John D. Baranzelli, P.E.
 acting ENGINEER OF DESIGN AND ENVIRONMENT

March 23 20 12
William R. Fleyler
 acting DIRECTOR OF HIGHWAYS, CHIEF ENGINEER

PRINTED BY THE AUTHORITY
 OF THE STATE OF ILLINOIS