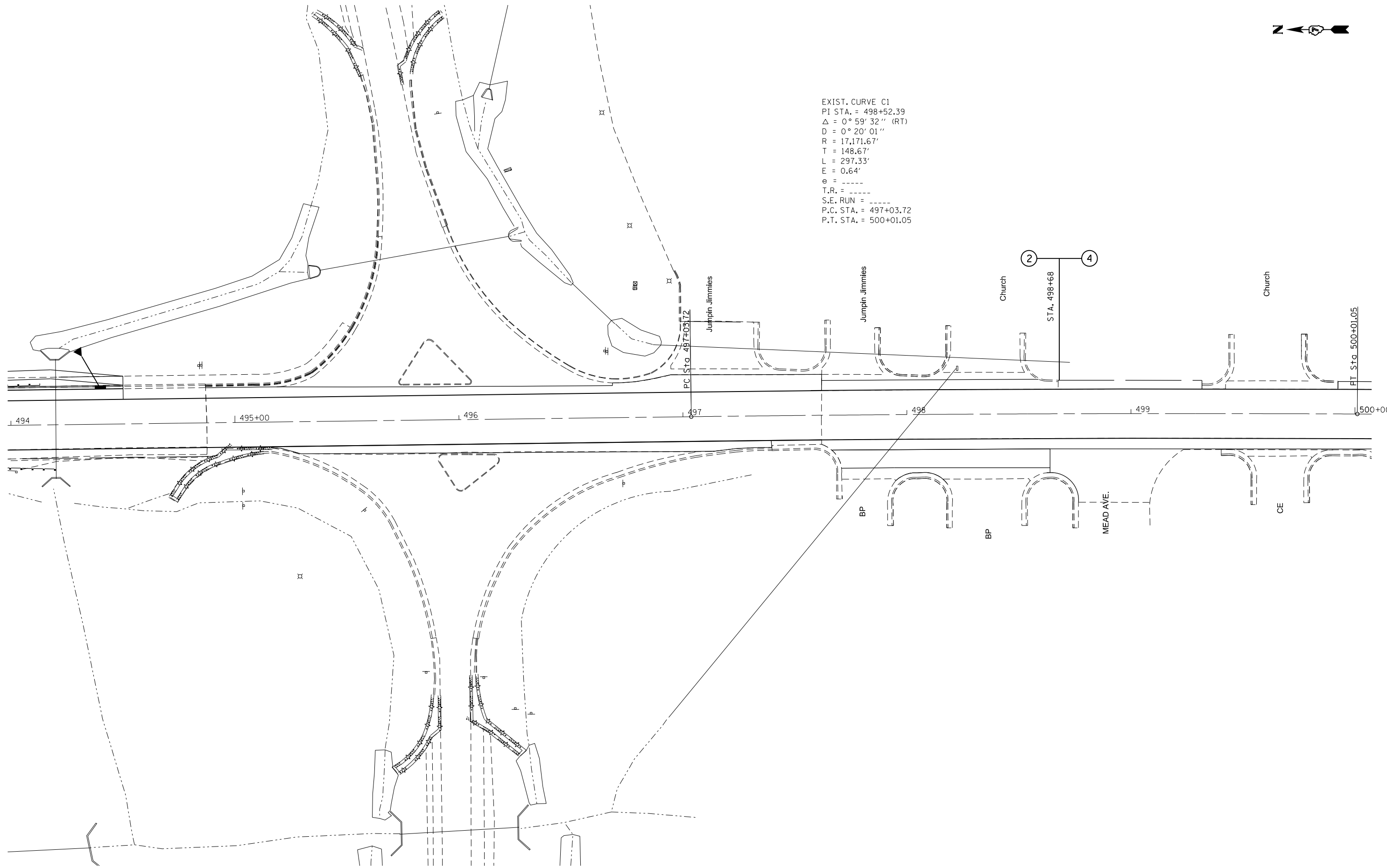




EXIST. CURVE C1
 PI STA. = 498+52.39
 $\Delta = 0^\circ 59' 32''$ (RT)
 $D = 0^\circ 20' 01''$
 $R = 17,171.67'$
 $T = 148.67'$
 $L = 297.33'$
 $E = 0.64'$
 $e = \text{-----}$
 $T.R. = \text{-----}$
 $S.E. RUN = \text{-----}$
 $P.C. STA. = 497+03.72$
 $P.T. STA. = 500+01.05$



FILE NAME =	USER NAME = steffenmk	DESIGNED -	REVISED -
ci:\pw\work\p\dot\stef\enmk\d0289124\074566-sh1-plan.dgn		DRAWN -	REVISED -
	PLOT SCALE = 40.0000' / in.	CHECKED -	REVISED -
	PLOT DATE = 1/27/2012	DATE -	REVISED -

**STATE OF ILLINOIS
 DEPARTMENT OF TRANSPORTATION**

PLAN

SCALE: 20 SHEET 3 OF 5 SHEETS STA. 494+00 TO STA. 500+00

F.A.P. RTE.	SECTION	COUNTY	TOTAL SHEETS	SHEET NO.
828	12RS-1	Effingham	37	20
CONTRACT NO. 74566			ILLINOIS FED. AID PROJECT	