

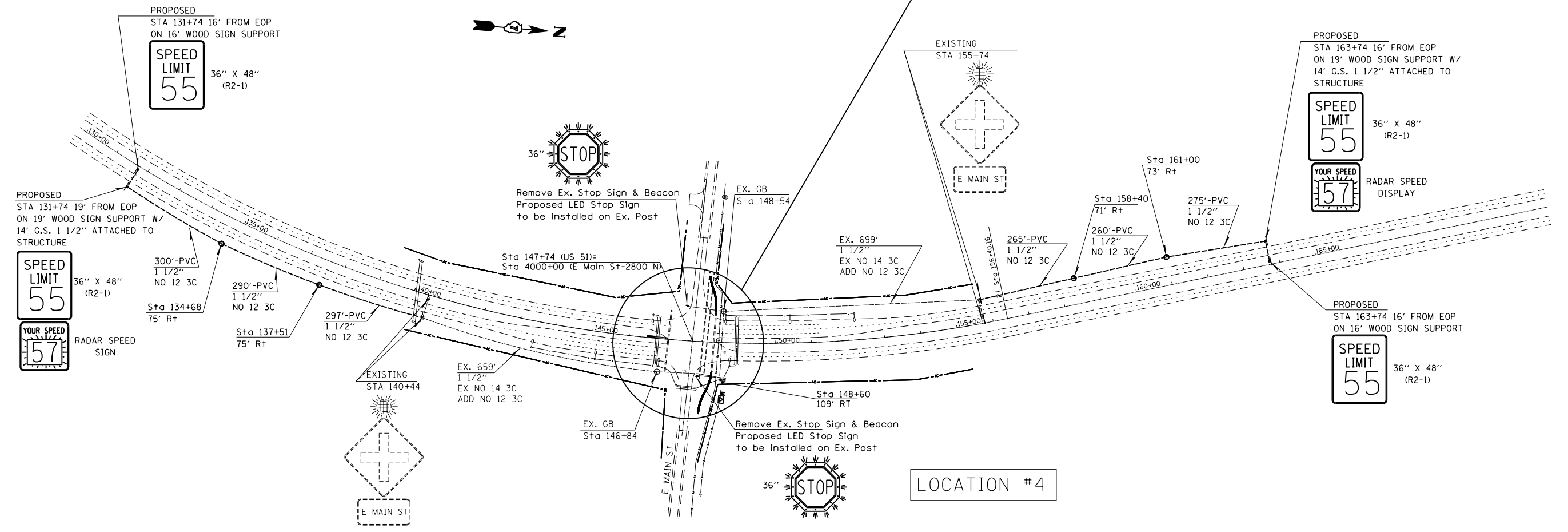
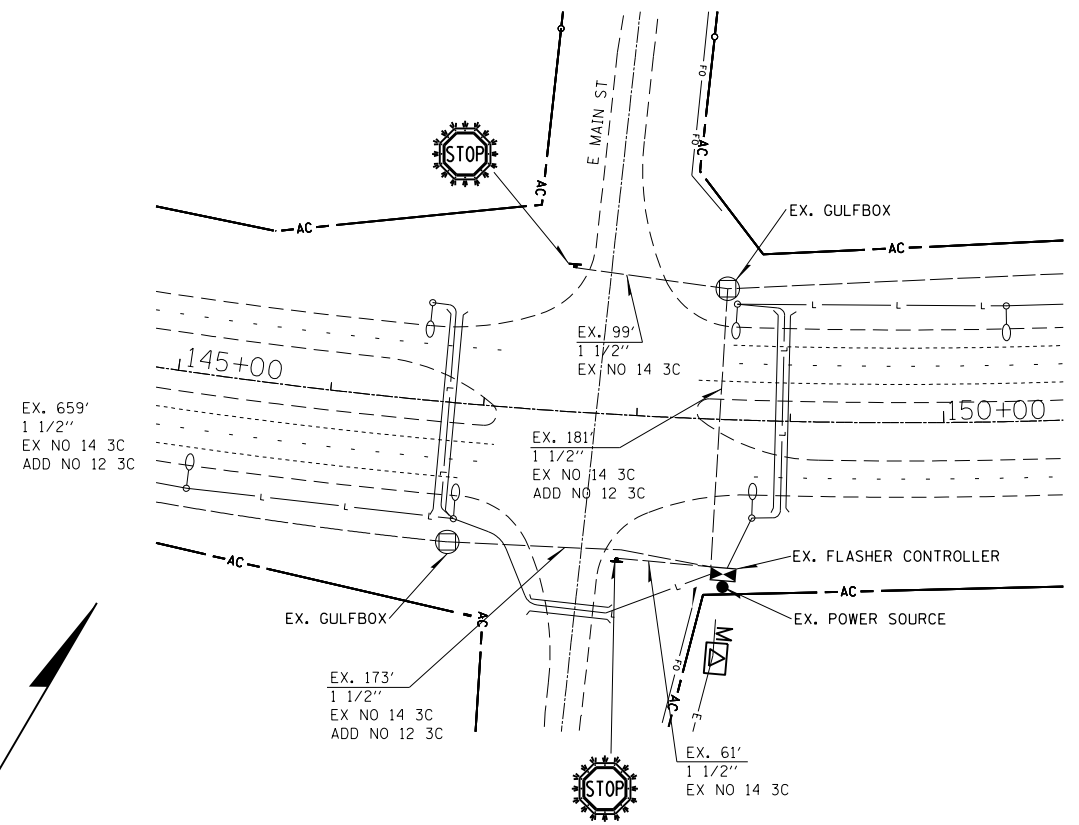
Existing Stop Sign Panels at the intersection shall be removed and returned to Illinois Department of Transportation. The existing Flashing Beacon will also be removed and returned and will be included in the cost of the Remove Existing Sign Panel.

The existing conduit and wire will be utilized for the proposed LED Stop Sign.

Existing conduit to Intersection Ahead sign Flashing Beacons will be utilized for the wire to the Radar Speed Signs.

BILL OF MATERIALS - MOWEAQUA		
ITEM	UNIT	QUANTITY
SIGN PANEL-TYPE 2	SO FT	48.0
WOOD SIGN SUPPORT	FOOT	70.0
THERMOPLASTIC PAVEMENT MARKING-LINE 4"	FOOT	541.0
THERMOPLASTIC PAVEMENT MARKING LINE-8"	FOOT	2263.0
THERMOPLASTIC PAVEMENT MARKING LINE-12"	FOOT	1171.0
UNDERGROUND CONDUIT, PVC, 1 1/2" DIA.	FOOT	1687.0
CONDUIT ATTACHED TO STRUCTURE, 1 1/2" GALVANIZED STEEL	FOOT	28.0
GULFBOX JUNCTION	EACH	4.0
ELECTRIC CABLE IN CONDUIT, SIGNAL NO. 12 3C	FOOT	3445.0
ILLUMINATED SIGN, LED	EACH	2.0
RADAR SPEED SIGN	EACH	2.0
REMOVE EXISTING SIGN PANEL	EACH	2.0
GROOVING FOR RECESSED PAVEMENT MARKING	FOOT	541.0

FOR PAVEMENT MARKING DETAILS-SEE SHEETS *6-*8



FILE NAME =	USER NAME = maclellanla	DESIGNED -	REVISED -	STATE OF ILLINOIS DEPARTMENT OF TRANSPORTATION	LOCATION #4 INTERSECTION OF E MAIN ST VILLAGE OF MOWEAQUA	F.A.P. RTE.	SECTION	COUNTY	TOTAL SHEETS	SHEET NO.	
et:\pw\work\pmdot\maclellanla\0296830\774568-shr-elec-plan.dgn		DRAWN -	REVISED -			322	D7 SAFETY 2012-1		21	5	
		CHECKED -	REVISED -			CONTRACT NO. 74568					
		DATE -	REVISED -			ILLINOIS FED. AID PROJECT					
					SCALE:	SHEET	OF	SHEETS	STA.	TO	STA.