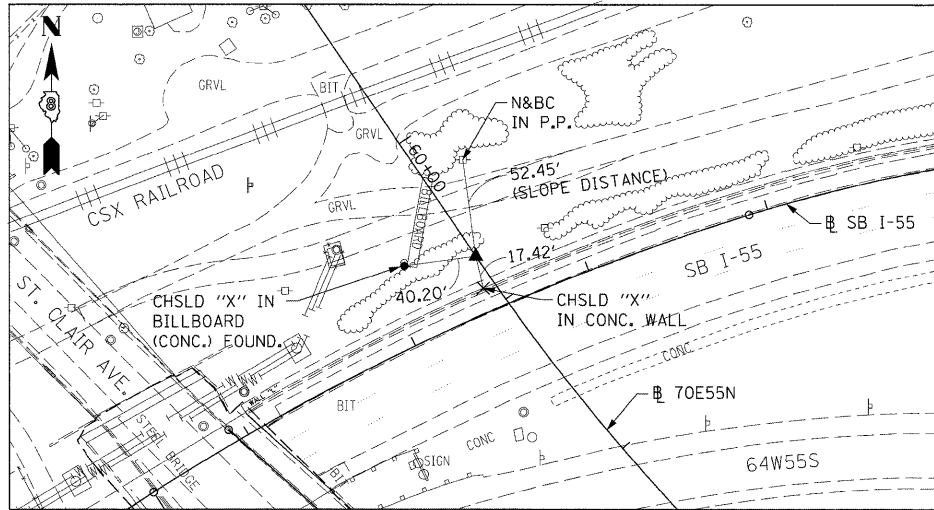
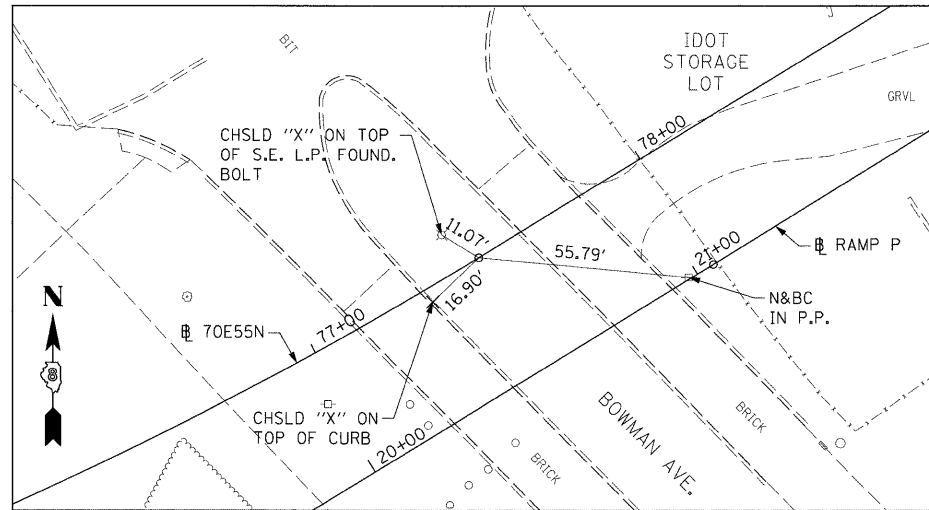


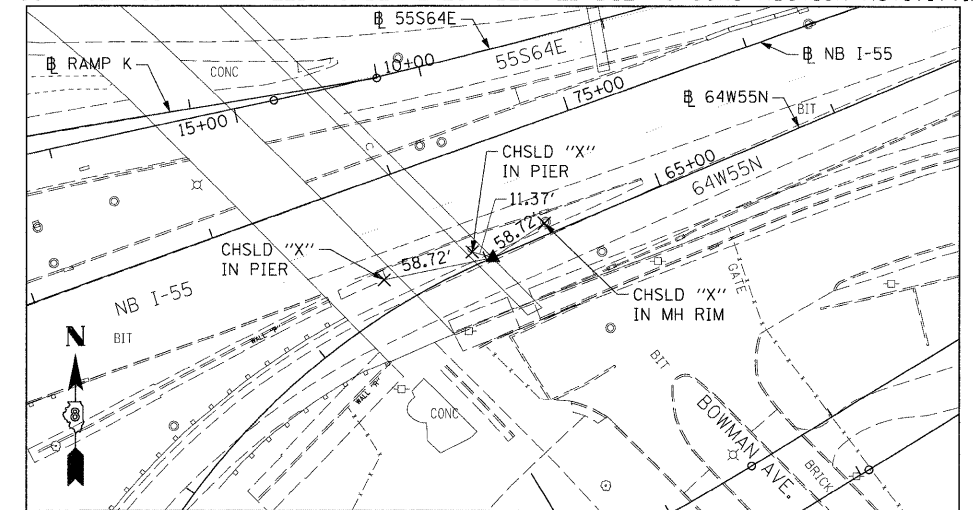
70E55N
PC 60+72.28
5/8" I. PIN W/YELLOW CAP



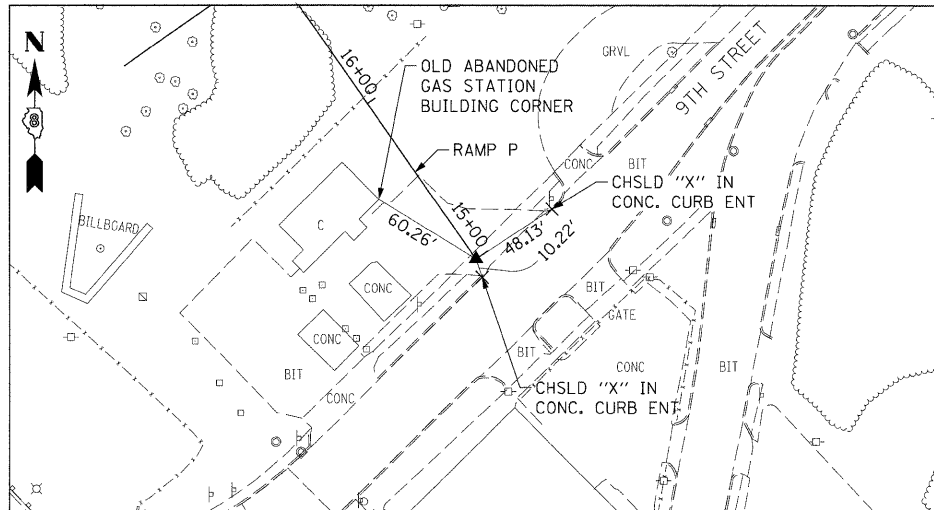
70E55N
PC 77+49.99
5/8" I. PIN



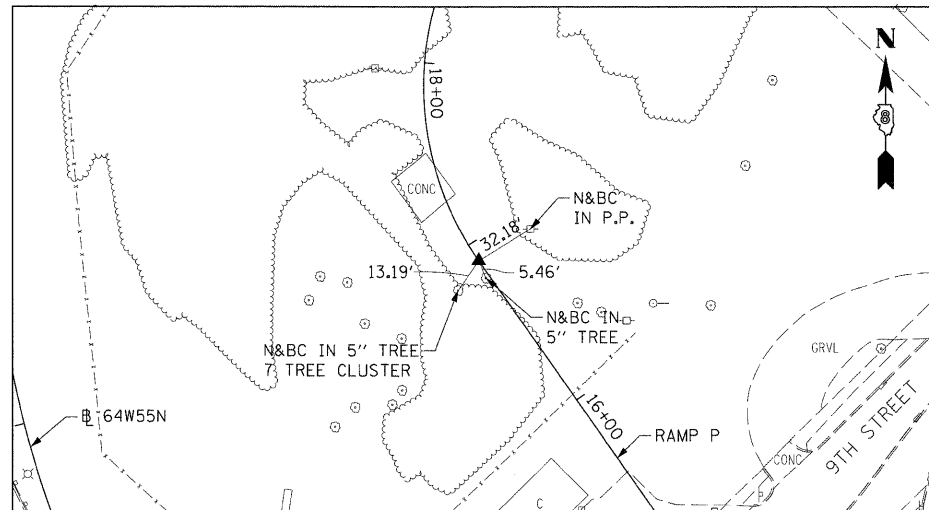
64W55N
P.T. STA 64+03.55
SET MAG NAIL IN CHSLD "X" W/CHSLD "X"
(CONTROL POINT MAY NEED TO BE RE-ESTABLISHED DUE TO CONSTRUCTION ACTIVITY.)



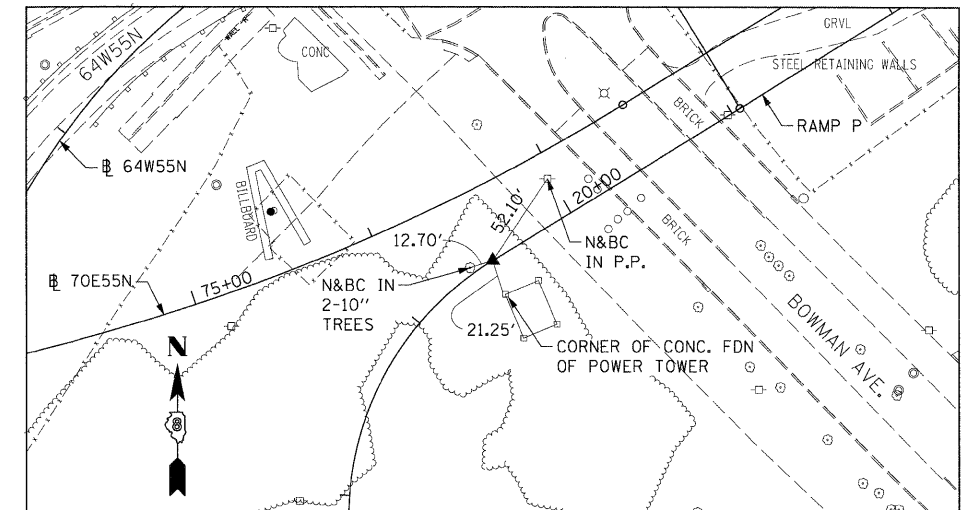
RAMP P
POT STA 15+00 = 520+44.97 (BAUGH)
SET MAG NAIL IN CONC. WITH CHISELLED "+"
(CONTROL POINT MAY NEED TO BE RE-ESTABLISHED DUE TO CONSTRUCTION ACTIVITY.)



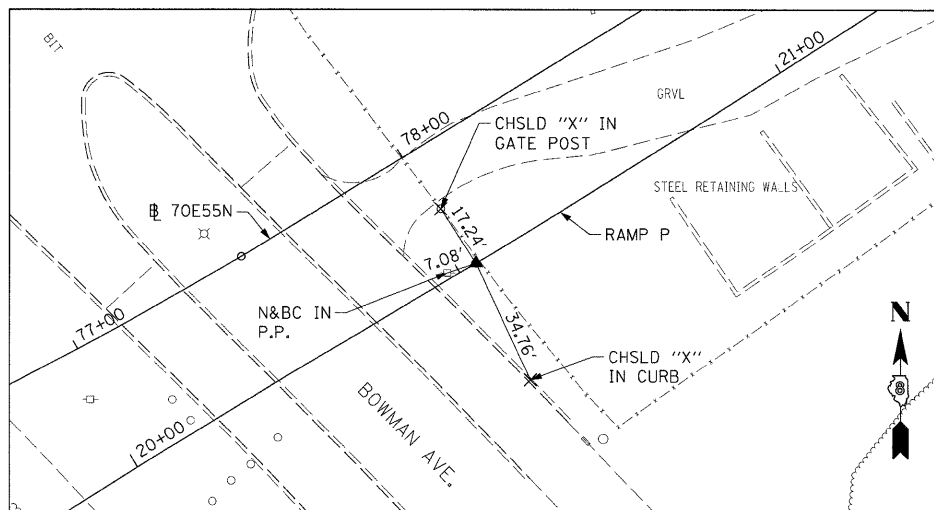
RAMP P
PC STA 16+90.04
SET 5/8" REBAR W/RED CAP FLUSH W/GR



RAMP P
PT STA 19+51.32
SET 5/8" REBAR W/RED CAP FLUSH W/GR



RAMP P
PC STA 21+04.96
SET 5/8" REBAR W/RED LIN ENG. CAP FLUSH W/GR



FILE NAME =
D:\TR1-76C45-sht-ATB-09.dgn

USER NAME = mmcconache
PLOT SCALE = 50.0000' / in.
PLOT DATE = 2/2/2012

DESIGNED - OP
DRAWN - PHP
CHECKED - DBM
DATE - 2/2/2012

REVISED -
REVISED -
REVISED -
REVISED -

STATE OF ILLINOIS
DEPARTMENT OF TRANSPORTATION

ALIGNMENT, TIES AND BENCHMARKS

SCALE: N/A SHEET NO. 9 OF 11 SHEETS STA. N/A TO STA. N/A

F.A.I. RTE.	SECTION	COUNTY	TOTAL SHEETS	SHEET NO.
•	82-15G	ST. CLAIR	145	19
•998/70/64			CONTRACT NO. 76C45	
FED. ROAD DIST. NO. ILLINOIS FED. AID PROJECT				