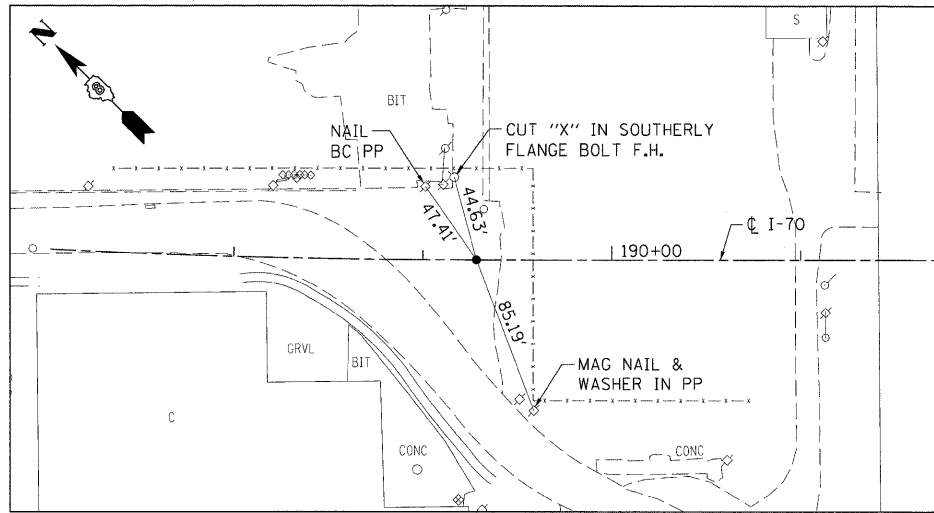
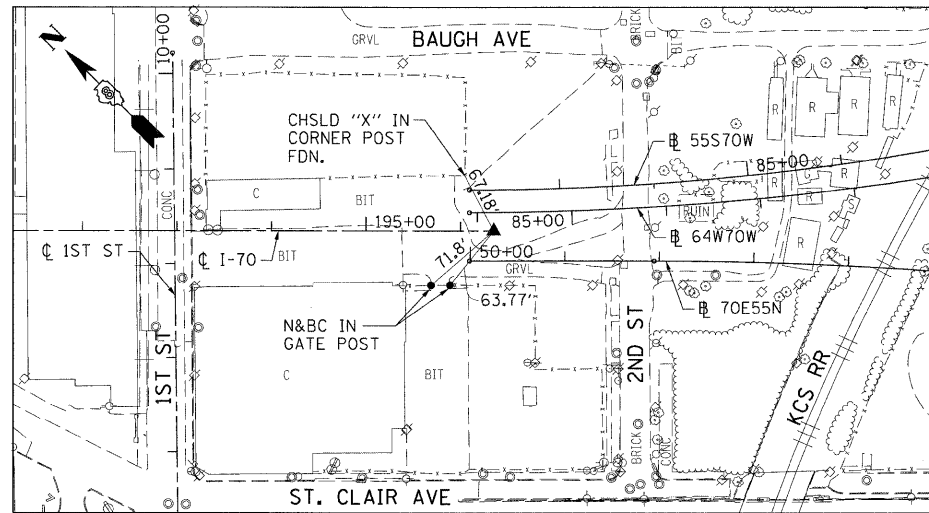


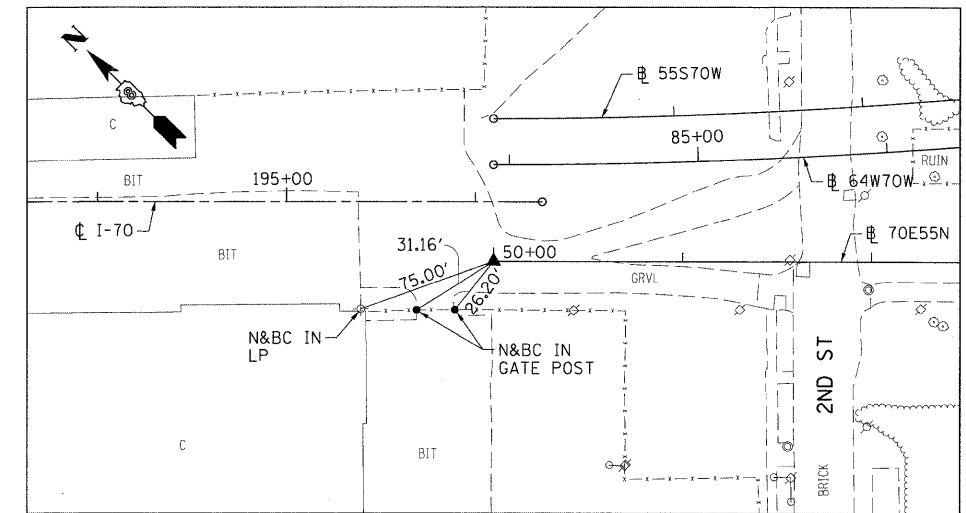
I-70  
PT STA 189+28.42  
COTTON SPINALE INSIDE CHSLD "X" IN BIT



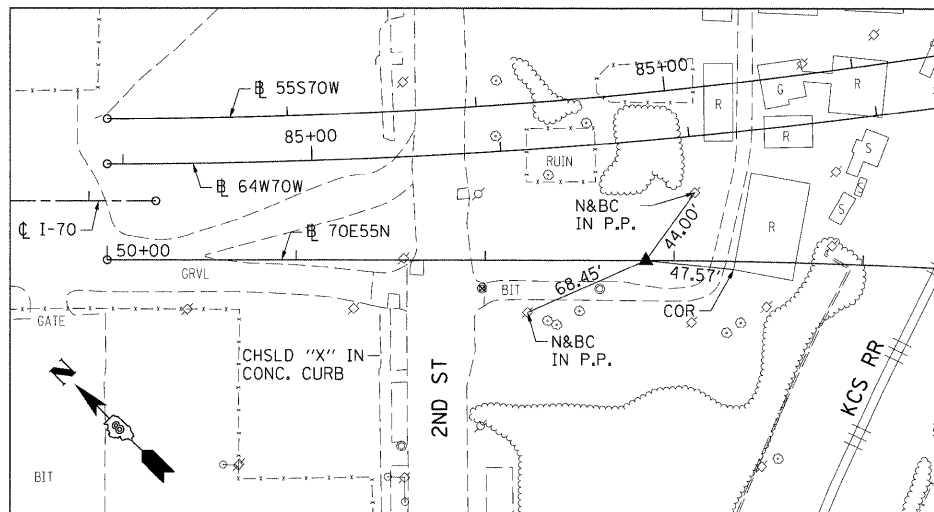
I-70  
POT STA 196+35.37  
SET 5/8" REBAR W/RED CAP FLUSH W/GR



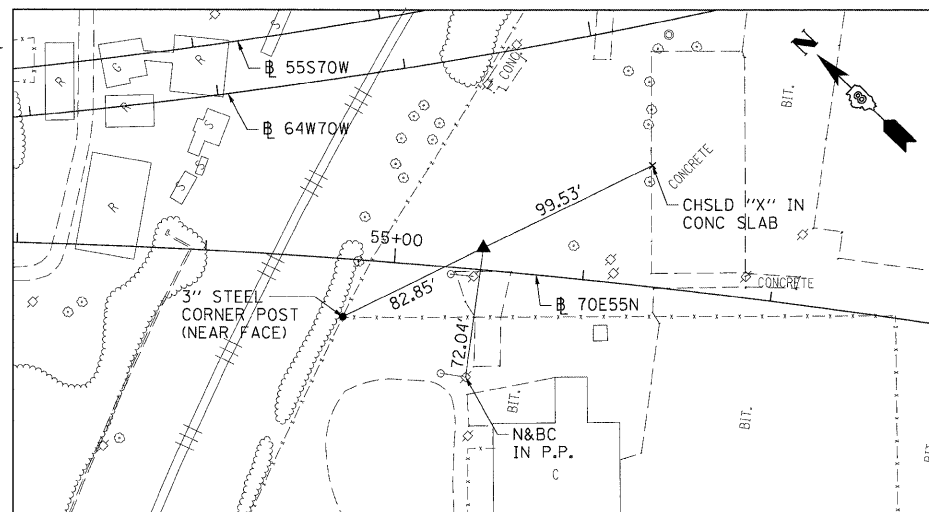
70E55N  
POT STA 50+00.00  
SET MAG NAIL IN BIT



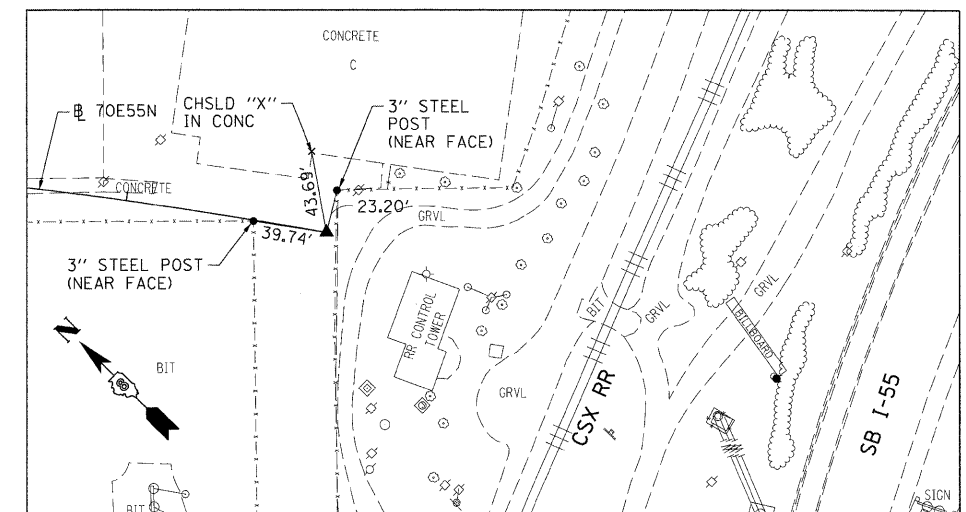
70E55N  
PC STA 52+85.08  
5/8" I. PIN W/YELLOW CAP



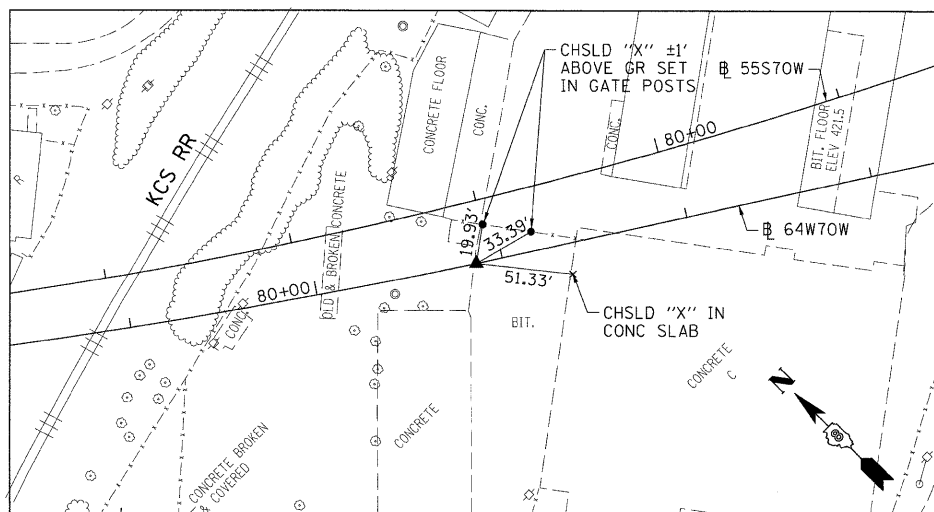
70E55N  
PI STA 55+46.88  
5/8" I. PIN W/YELLOW CAP



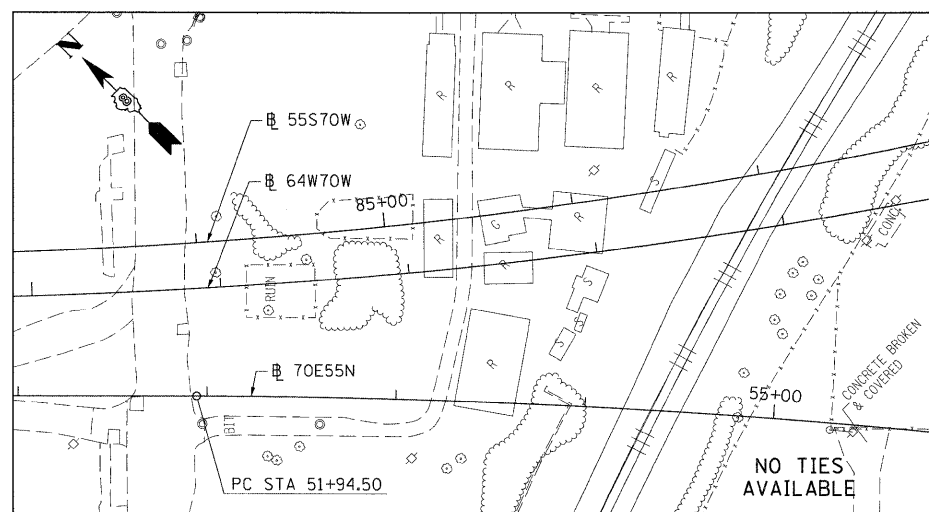
70E55N  
PT STA 58+07.32  
SET MAG NAIL IN BIT LOT



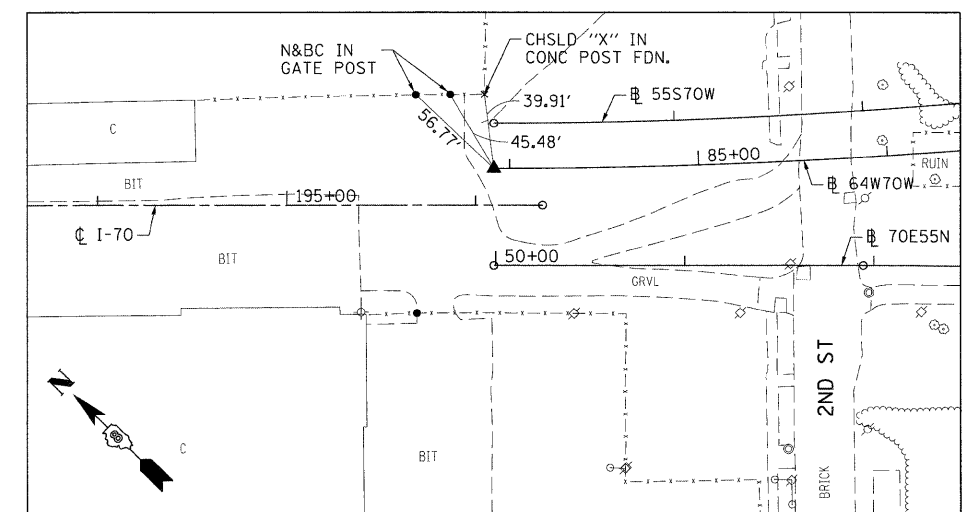
64W70W  
PC STA 79+13.90  
SET 5/8" REBAR W/RED CAP FLUSH W/GR



64W70W  
PI STA 82+62.48



64W70W  
PT STA 86+08.31  
SET 5/8" REBAR W/RED CAP FLUSH W/GR



FILE NAME =  
D8TR1-76C45-sh1-ATR-10.dgn

USER NAME = meconachie  
DESIGNED -  
DRAWN -  
CHECKED -  
DATE = 2/2/2012

DESIGNED -  
DRAWN -  
CHECKED -  
DATE = 2/2/2012

REVISED -  
REVISED -  
REVISED -  
REVISED -

STATE OF ILLINOIS  
DEPARTMENT OF TRANSPORTATION

ALIGNMENT, TIES AND BENCHMARKS

SCALE: N/A SHEET NO. 10 OF 11 SHEETS STA. N/A TO STA. N/A

F.A.I. RTE.	SECTION	COUNTY	TOTAL SHEETS	SHEET NO.
998/70/64	82-15G	ST. CLAIR	145	20
CONTRACT NO. 76C45				

FED. ROAD DIST. NO. ILLINOIS FED. AID PROJECT