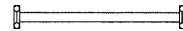



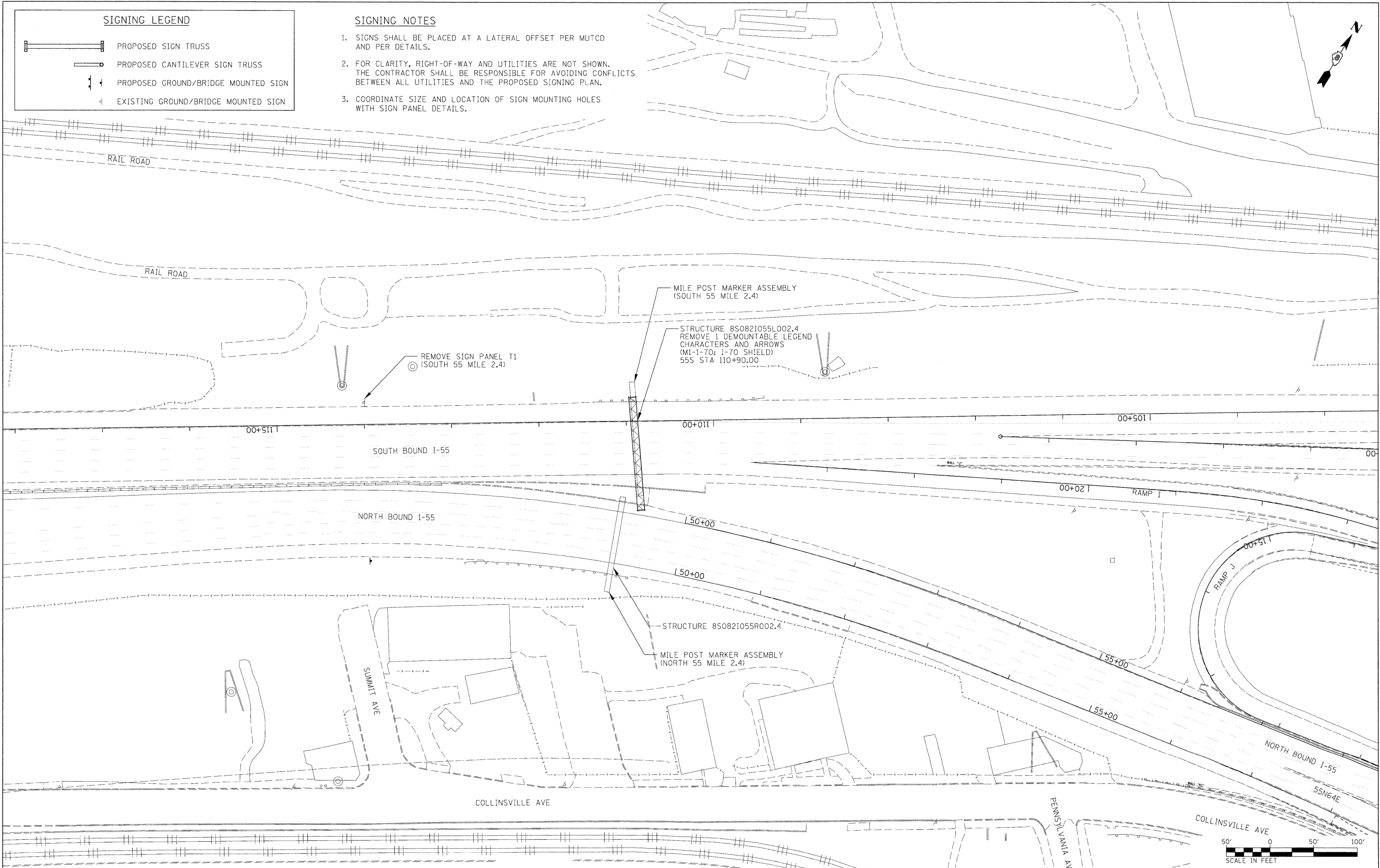
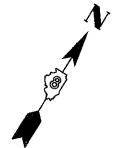


SIGNING LEGEND

-  PROPOSED SIGN TRUSS
-  PROPOSED CANTILEVER SIGN TRUSS
-  PROPOSED GROUND/BRIDGE MOUNTED SIGN
-  EXISTING GROUND/BRIDGE MOUNTED SIGN

SIGNING NOTES

1. SIGNS SHALL BE PLACED AT A LATERAL OFFSET PER MUTCD AND PER DETAILS.
2. FOR CLARITY, RIGHT-OF-WAY AND UTILITIES ARE NOT SHOWN. THE CONTRACTOR SHALL BE RESPONSIBLE FOR AVOIDING CONFLICTS BETWEEN ALL UTILITIES AND THE PROPOSED SIGNING PLAN.
3. COORDINATE SIZE AND LOCATION OF SIGN MOUNTING HOLES WITH SIGN PANEL DETAILS.



FILE NAME = DBTRI-76C45-sh1-sign10.dgn

USER NAME = mmccorachie
 DESIGNED - PMK
 DRAWN - PMK
 CHECKED - MPW
 DATE - 2/2/2012

REVISED -
 REVISED -
 REVISED -
 REVISED -

**STATE OF ILLINOIS
 DEPARTMENT OF TRANSPORTATION**

SIGNING PLAN

SCALE: 1" = 50' SHEET NO. 10 OF 29 SHEETS STA. N/A TO STA. N/A

F.A.I. RTE.	SECTION	COUNTY	TOTAL SHEETS	SHEET NO.
•	82-15G	ST. CLAIR	145	32
•998/10/64			CONTRACT NO. 76C45	
FED. ROAD DIST. NO.		ILLINOIS FED. AID PROJECT		