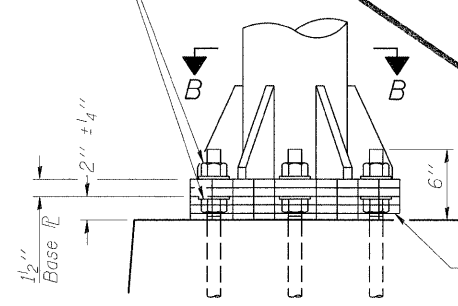


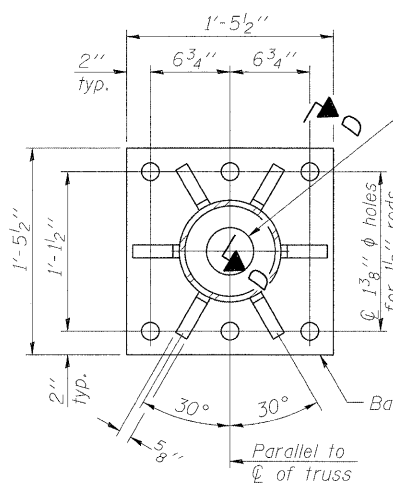
Hexagon locknut and washer (top), leveling nut and washer (bottom). Galvanize per AASHTO M232. Nuts shall each be tightened against base plate with 200 lb.-ft. minimum torque.



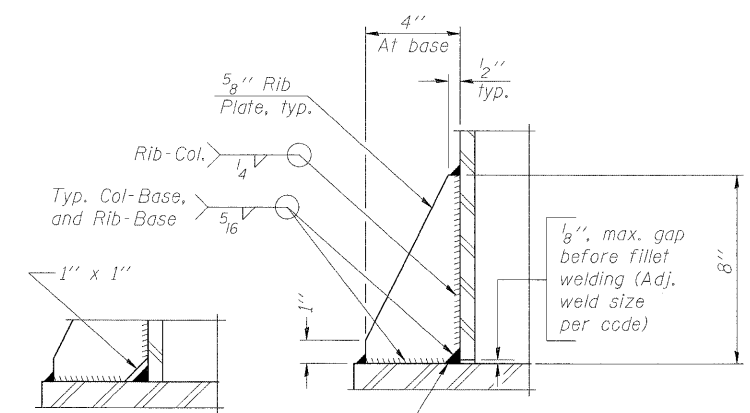
**DETAIL B**

Ribs shall be cut to fit slope of pipe.

Stainless Steel Standard Grade Wire Cloth, 3" wide, 1/4" maximum opening with a minimum wire diameter of AWG. No. 16 with a minimum 2" lap. Secure to base plate after erection with 3/4" stainless steel banding.



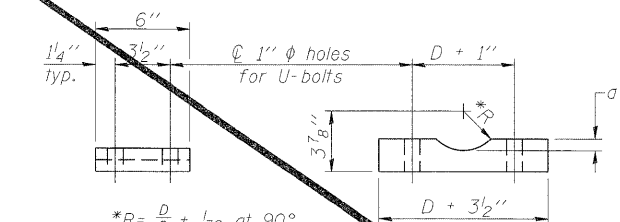
**SECTION B-B**



**SECTION D-D**

\*\* Alternate detail if welding col. to base plate first, then snip inside corner of ribs. Terminate weld on rib 1/4" from snip.

No snip req'd. at rib inside corner if placed before col. to base plate welding.

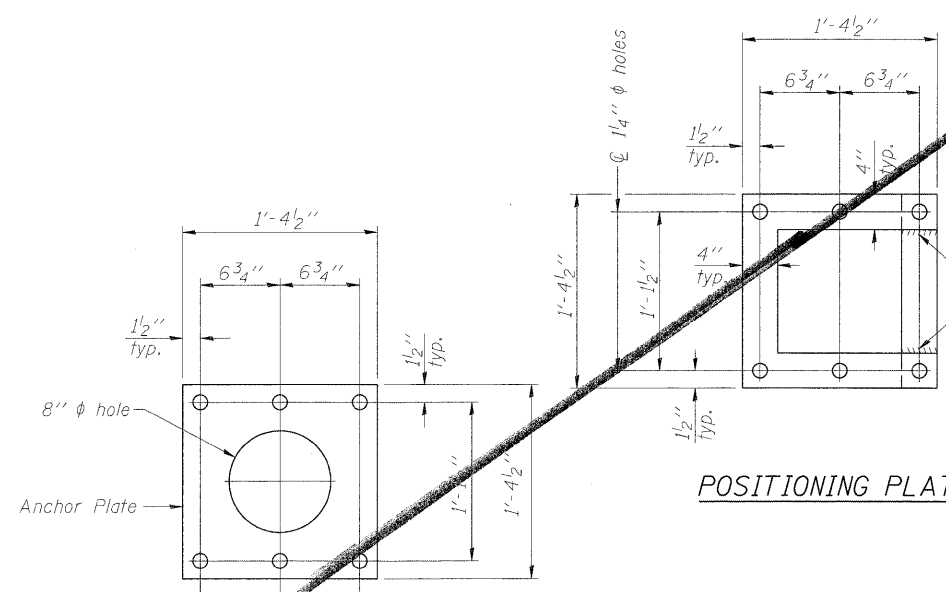


\*R =  $\frac{D}{2} + \frac{1}{32}$  at 90°  
D = Outside Diameter of Chord.

**SADDLE SHIM DETAIL**

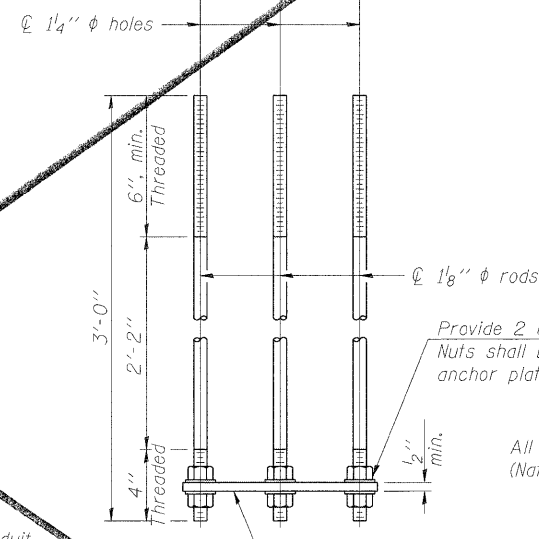
ASTM B26 Alloy 356-F  
or  
ASTM B209 Alloy 6061-T651  
(4 required per sign truss)

Truss Chord Nominal Dia.	
5"	3/4"
6"	13/16"
8"	7/8"
6 1/2"	15/16"



**POSITIONING PLATE(S)**

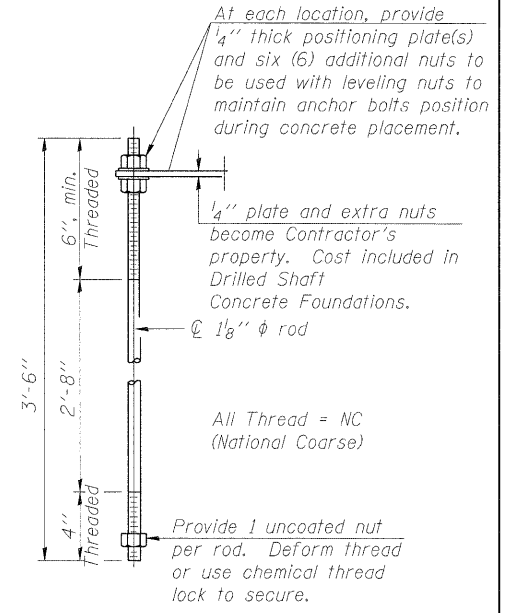
Optionally may use four (4) separate bars. Weld to maintain perpendicularity.



**ANCHOR ROD DETAIL**  
Spread Footing Foundation

Provide 2 uncoated nuts per rod. Nuts shall be "snug tight" against anchor plate.

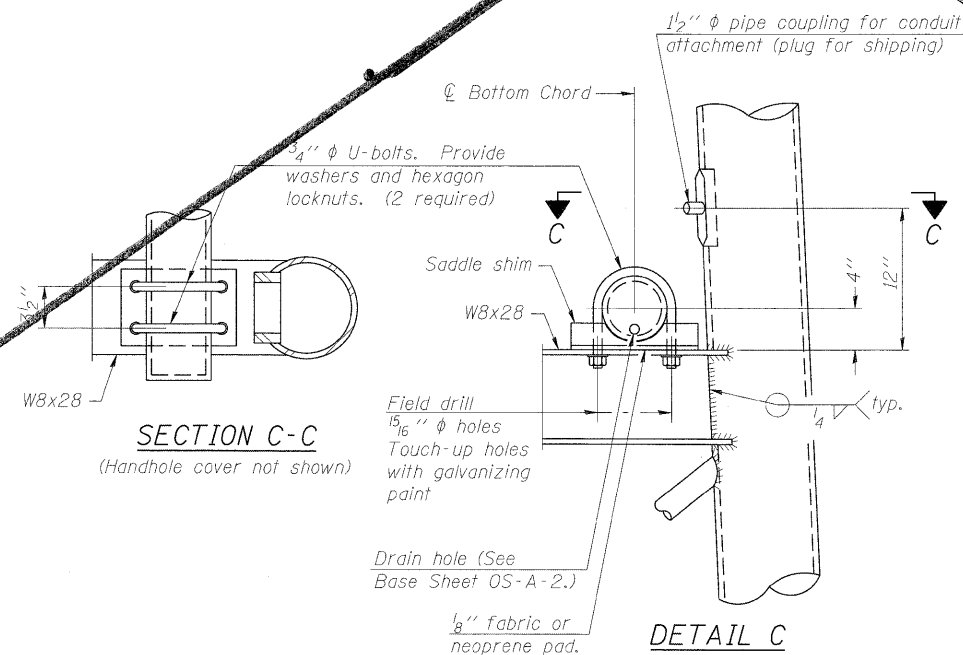
All Thread = NC (National Coarse)



**ANCHOR ROD DETAIL**  
Drilled Shaft Foundation

Provide 1 uncoated nut per rod. Deform thread or use chemical thread lock to secure.

All Thread = NC (National Coarse)



**SECTION C-C**  
(Handhole cover not shown)

**DETAIL C**

**TYPE I-A TRUSS**  
8" φ PIPE SUPPORT FRAME DETAILS

Anchor rods shall conform to AASHTO M314 Grade 36 or 55 and meet Charpy V-Notch (CVN) energy of 15 lb.-ft. at 40° F. Galvanize upper 12" per AASHTO M232. No welding shall be permitted on rods.

OS-A-4A

7-1-10

FILE NAME =	USER NAME =	DESIGNED - PMK	REVISED -	<b>STATE OF ILLINOIS DEPARTMENT OF TRANSPORTATION</b>	<b>OVERHEAD SIGN STRUCTURES SUPPORT FRAME DETAILS - ALUMINUM TRUSS</b>	F.A.I. RTE.	SECTION	COUNTY	TOTAL SHEETS	SHEET NO.
PLOT SCALE =	DRAWN - PMK	CHECKED - MPW	REVISED -			•	B2-15G	ST. CLAIR	145	90
PLOT DATE =	CHECKED - MPW	REVISED -	REVISED -			•998/70/64				CONTRACT NO. 76C45
						SHEET NO. 4 OF 16 SHEETS				