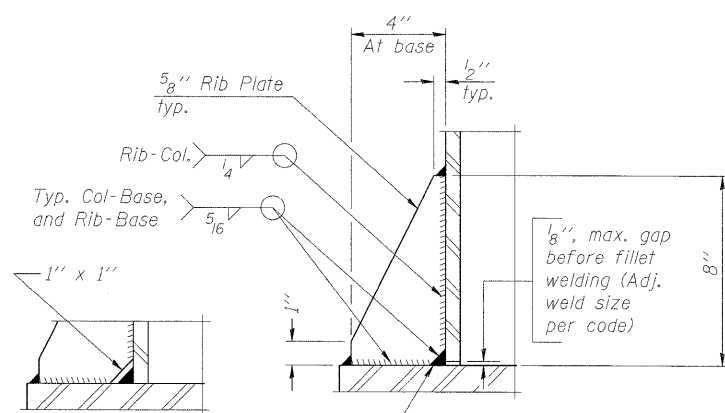
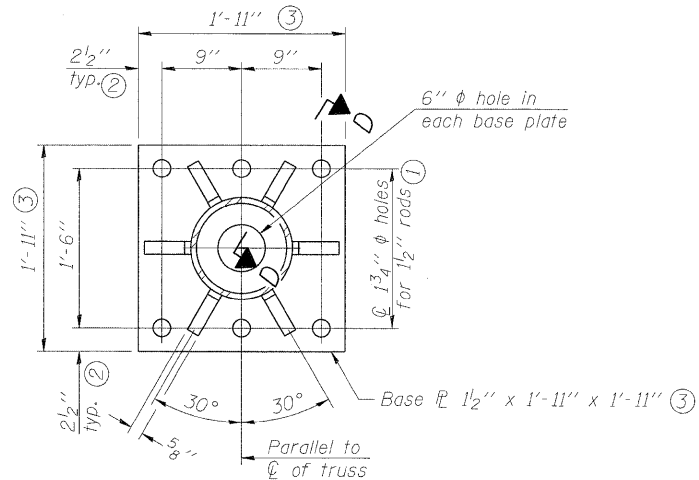
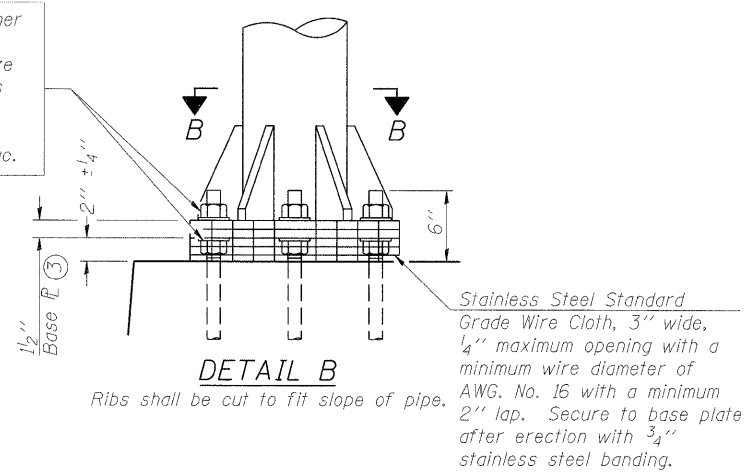
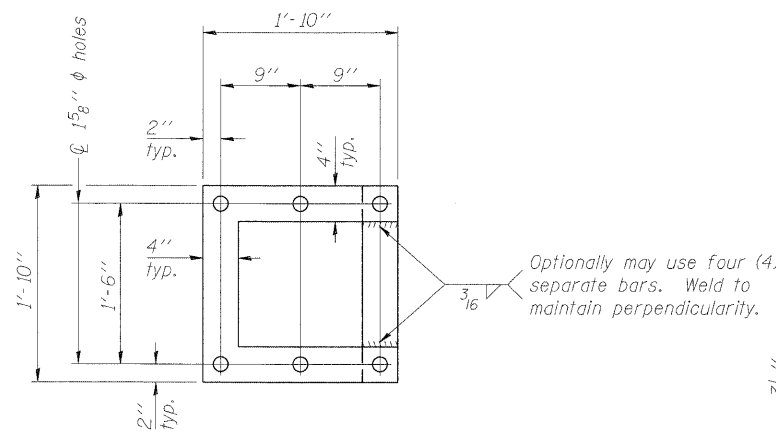


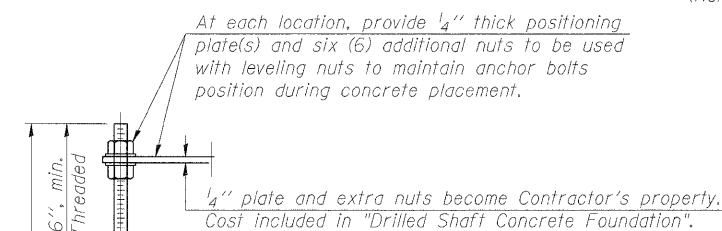
Hexagon locknut and washer (top), leveling nut and washer (bottom). Galvanize per AASHTO M232. Nuts shall each be tightened against base plate with 200 lb.-ft. minimum torque.



\*\* Alternate detail if welding col. to base plate first, then snip inside corner of ribs. Terminate weld on rib 1/4" from snip.



POSITIONING PLATE(S)



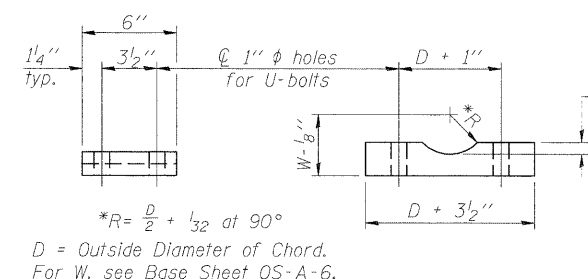
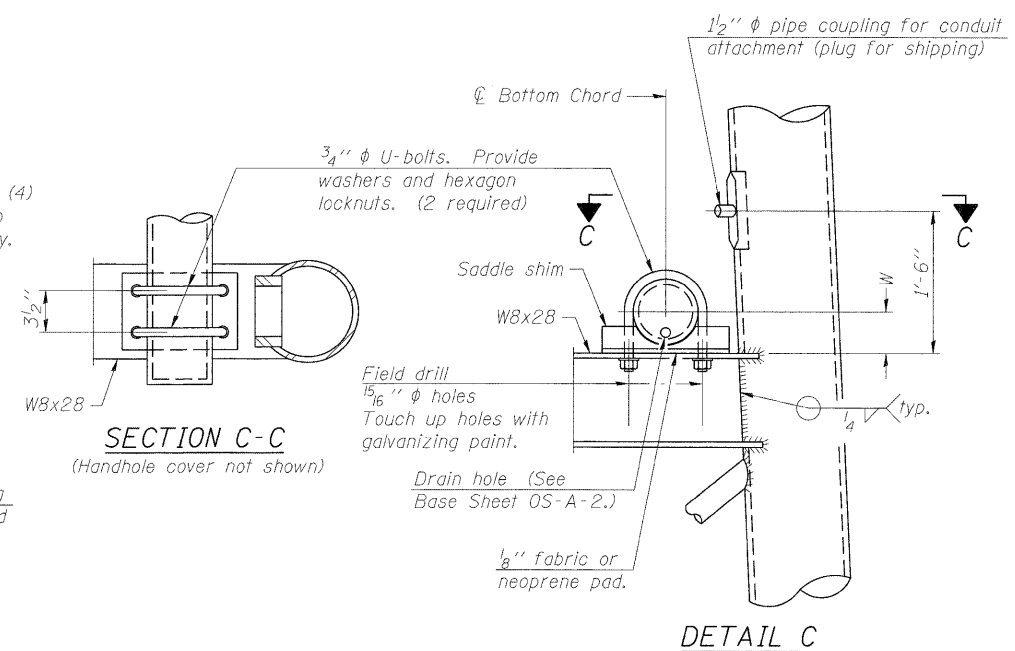
ANCHOR ROD DETAIL

Anchor rods shall conform to AASHTO M314 Grade 36 or 55 and meet Charpy V-Notch (CVN) energy of 15 lb.-ft. at 40° F. Galvanize upper 12" per AASHTO M232. No welding shall be permitted on rods.

TYPE III-A TRUSS  
12"  $\phi$  PIPE SUPPORT FRAME DETAILS

Notes:  
For Type III-A Truss spans greater than 150 ft. and up to 160 ft.:

- ① 1 3/4"  $\phi$  rod, 2"  $\phi$  holes
- ② 2 3/4" edge distance
- ③ Base Pl. 1 5/8" x 1' - 11 1/2" x 1' - 11 1/2"



Truss Chord Nominal Dia.	a
7"	1"
8 1/2"	1 1/4"
9"	1 3/8"

SADDLE SHIM DETAIL  
ASTM B26 Alloy 356-F  
or  
ASTM B209 Alloy 6061-T651  
(4 required per sign truss)

OS4-A-8aA

7-1-10

FILE NAME =	USER NAME =	DESIGNED - PMK	REVISD -	STATE OF ILLINOIS DEPARTMENT OF TRANSPORTATION		OVERHEAD SIGN STRUCTURES SUPPORT FRAME FOR TYPE III-A ALUMINUM TRUSS		F.A.I. RTE.	SECTION	COUNTY	TOTAL SHEETS	SHEET NO.
		CHECKED - MPW	REVISD -						82-15G	ST. CLAIR	145	95
		DRAWN - PMK	REVISD -									
		CHECKED - MPW	REVISD -									
								*998/70/64		CONTRACT NO. 76C45		
								ILLINOIS FED. AID PROJECT				

SHEET NO. 9 OF 16 SHEETS