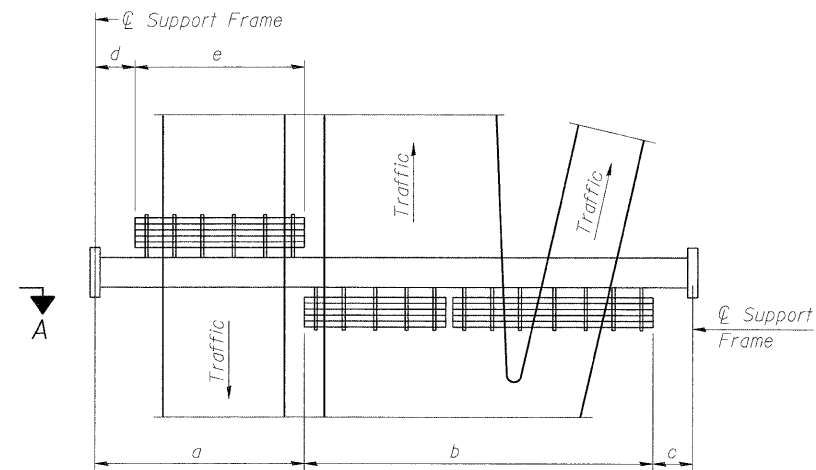


TYPICAL FRONT ELEVATION

With lights and handrail omitted for clarity.
For Section B-B, see Base Sheet OS-A-10.



PLAN WALKWAY AND HANDRAIL SKETCH
(Road plan beneath truss varies)

BRACKET TABLE

WF(A-N)4x1.79 or WF(A-N)4x3.06 ASTM B308, Alloy 6061-T6		
Sign Width		Number Brackets Required
Greater Than	Less Than or Equal To	
8'-0"	14'-0"	2
14'-0"	20'-0"	3
20'-0"	26'-0"	4
26'-0"	32'-0"	5
		6

Notes:

* Space walkway brackets WF(A-N)4x3.06 and sign brackets WF(A-N)4x1.79 for efficiency and within limits shown:

f = 12" maximum, 4" minimum (End of sign to center of nearest bracket)

g = 12" maximum, 4" minimum (End of walkway grating to center of nearest support bracket)

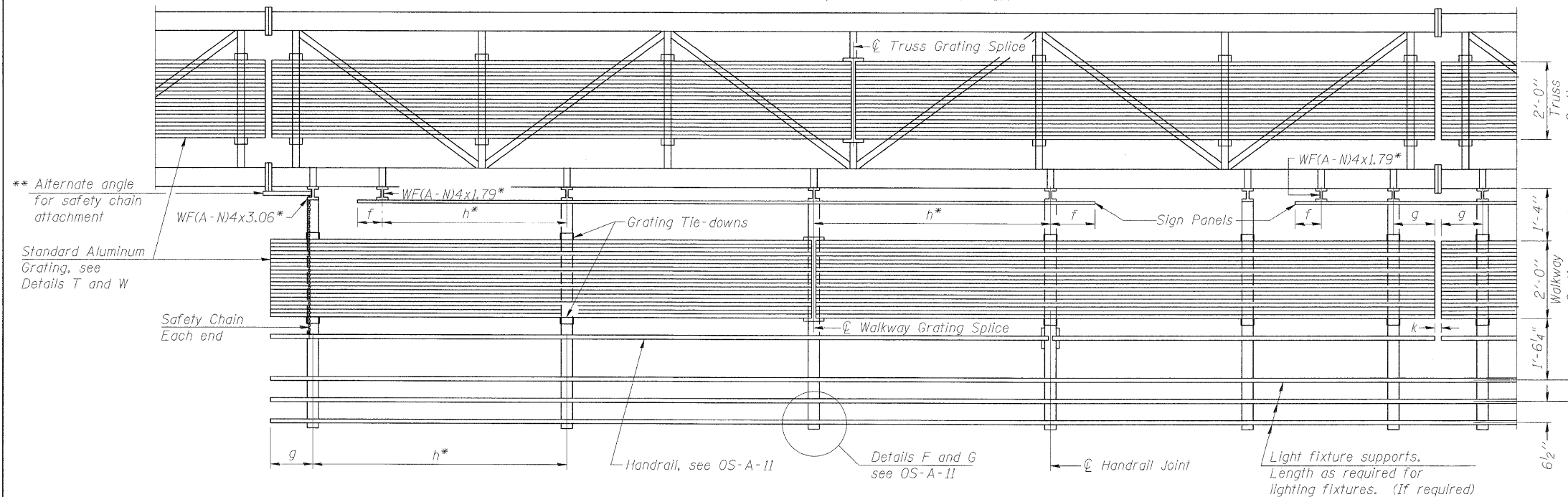
h = 6'-0" maximum (center to center of sign and/or walkway support brackets, WF(A-N)4x1.79 or WF(A-N)4x3.06)

k = 2" maximum gap between adjacent walkway grating sections and handrail ends

** If walkway bracket at safety chain location is behind sign, add angle to bracket, see Alternate Safety Chain Attachment on Base Sheet OS-A-11.

For Details T and W, Section B-B and Grating Splice Details see Base Sheet OS-A-10.

For Handrail Details see Base Sheet OS-A-11.



SECTION A-A

Handrail and walkway shall span a minimum of three brackets between splices and/or gap joints. Place all sign and walkway brackets as close to panel points as practical. Handrail joints, grating, and light support splices placed as needed.

Structure Number	Station	a	b	c	d	e	Walkway Grating and Handrail Lengths
8S0821055L002.0	13+35.55	8'-0"	45'-0"	15'-0"	0'-0"	0'-0"	45'-0"
8S0821064L003.6	77+03.00	10'-6"	44'-6"	7'-0"	0'-0"	0'-0"	44'-6"
8S0821064L004.4	MM 4.5	15'-3"	76'-0"	12'-9"	0'-0"	0'-0"	76'-0"
8S0821055L003.6	MM 3.6	3'-0"	65'-0"	22'-0"	0'-0"	0'-0"	65'-0"
8S0821055R003.6	MM 3.6	7'-0"	58'-0"	28'-0"	0'-0"	0'-0"	58'-0"
8S0821055L005.0	MM 5.0	16'-6"	44'-0"	28'-6"	0'-0"	0'-0"	44'-0"

Truss grating to facilitate inspection shall run full length (center to center of support frames) ±12" on overhead trusses. Cost of truss grating is included in "Overhead Sign Structure".

Walkway and Truss Grating width dimensions are nominal and may vary ±1/2" based on available standard widths.

OS-A-9

7-1-10

FILE NAME =	USER NAME =	DESIGNED - PMK	REVISOR -	STATE OF ILLINOIS DEPARTMENT OF TRANSPORTATION	OVERHEAD SIGN STRUCTURES ALUMINUM WALKWAY DETAILS	F.A.I. RTE.	SECTION	COUNTY	TOTAL SHEETS	SHEET NO.
PLOT SCALE =	CHECKED - MPW	REVISOR -	•			82-1SG	ST. CLAIR	145	96	
PLOT DATE =	DRAWN - PMK	REVISOR -	•998/70/64			CONTRACT NO. 76C45				
	CHECKED - MPW	REVISOR -	ILLINOIS FED. AID PROJECT							