

| F.A.P. RTE. | SECTION         | COUNTY  | TOTAL SHEETS       | SHEET NO. |
|-------------|-----------------|---------|--------------------|-----------|
| 310         | 6-(8,9,10,11)-1 | MADISON | 17                 | 1         |
| ILLINOIS    |                 |         | CONTRACT NO. 76F16 |           |

STATE OF ILLINOIS  
DEPARTMENT OF TRANSPORTATION  
DIVISION OF HIGHWAYS

# PROPOSED HIGHWAY PLANS

FAP ROUTE 310 (IL 255)  
SECTION 60-(8,9,10,11)-1  
SHOULDER RUMBLE STRIPS  
PROJECT HSIP-0310(148)  
MADISON COUNTY

C-98-005-12

D-98-006-12



**INDEX OF SHEETS**

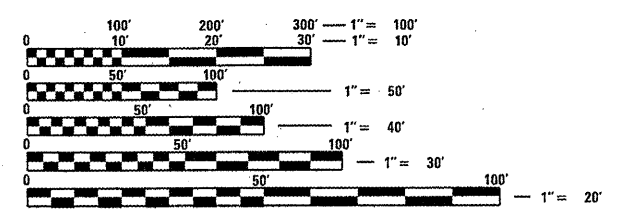
- 1 COVER SHEET
- 2 GENERAL NOTES, SCHEDULES & SUMMARY OF QUANTITIES
- 3 - 4 TYPICAL SECTIONS
- 5 - 17 PLAN SHEETS

**HIGHWAY STANDARDS**

- 000001-06
- 001006
- 642001-02
- 701400-05
- 701401-06
- 701901-02

**COMMITMENTS**

NONE

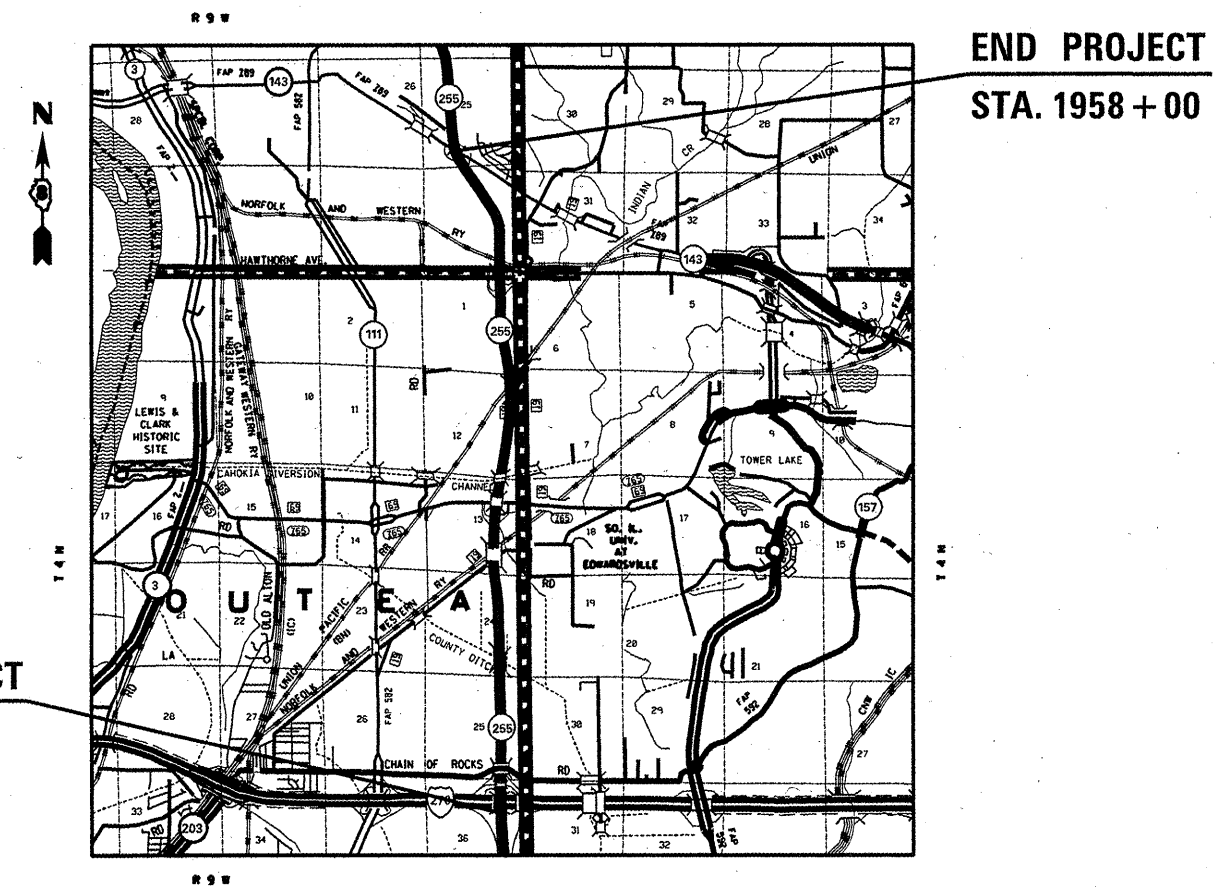


FULL SIZE PLANS HAVE BEEN PREPARED USING STANDARD ENGINEERING SCALES. REDUCED SIZED PLANS WILL NOT CONFORM TO STANDARD SCALES. IN MAKING MEASUREMENTS ON REDUCED PLANS, THE ABOVE SCALES MAY BE USED.

J.U.L.I.E.  
JOINT UTILITY LOCATION INFORMATION FOR EXCAVATION  
1-800-892-0123  
OR 811

PROJECT ENGINEER: TIM PADGETT (618)346-3325  
PROJECT MANAGER: LIZ BURNSIDE (618)346-3196

CONTRACT NO. 76F16



GROSS LENGTH = 36,070 FT. = 6.83 MILE  
NET LENGTH = 33,725 FT. = 6.39 MILE

STATE OF ILLINOIS  
DEPARTMENT OF TRANSPORTATION  
DIVISION OF HIGHWAYS

SUBMITTED January 31, 2012

*[Signature]*  
DEPUTY DIRECTOR OF HIGHWAYS, REGION ENGINEER

March 23, 2012  
*John D. Baranzelli, P.E.*  
ENGINEER OF DESIGN AND ENVIRONMENT

March 23, 2012  
*William R. French*  
DIRECTOR OF HIGHWAYS, CHIEF ENGINEER

**PRINTED BY THE AUTHORITY  
OF THE STATE OF ILLINOIS**