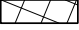
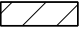

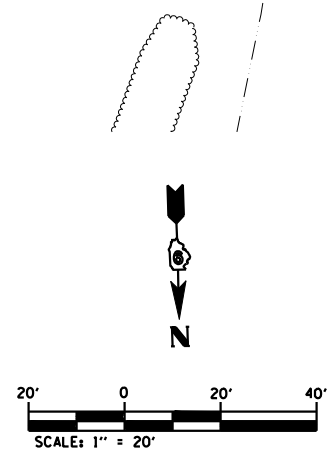
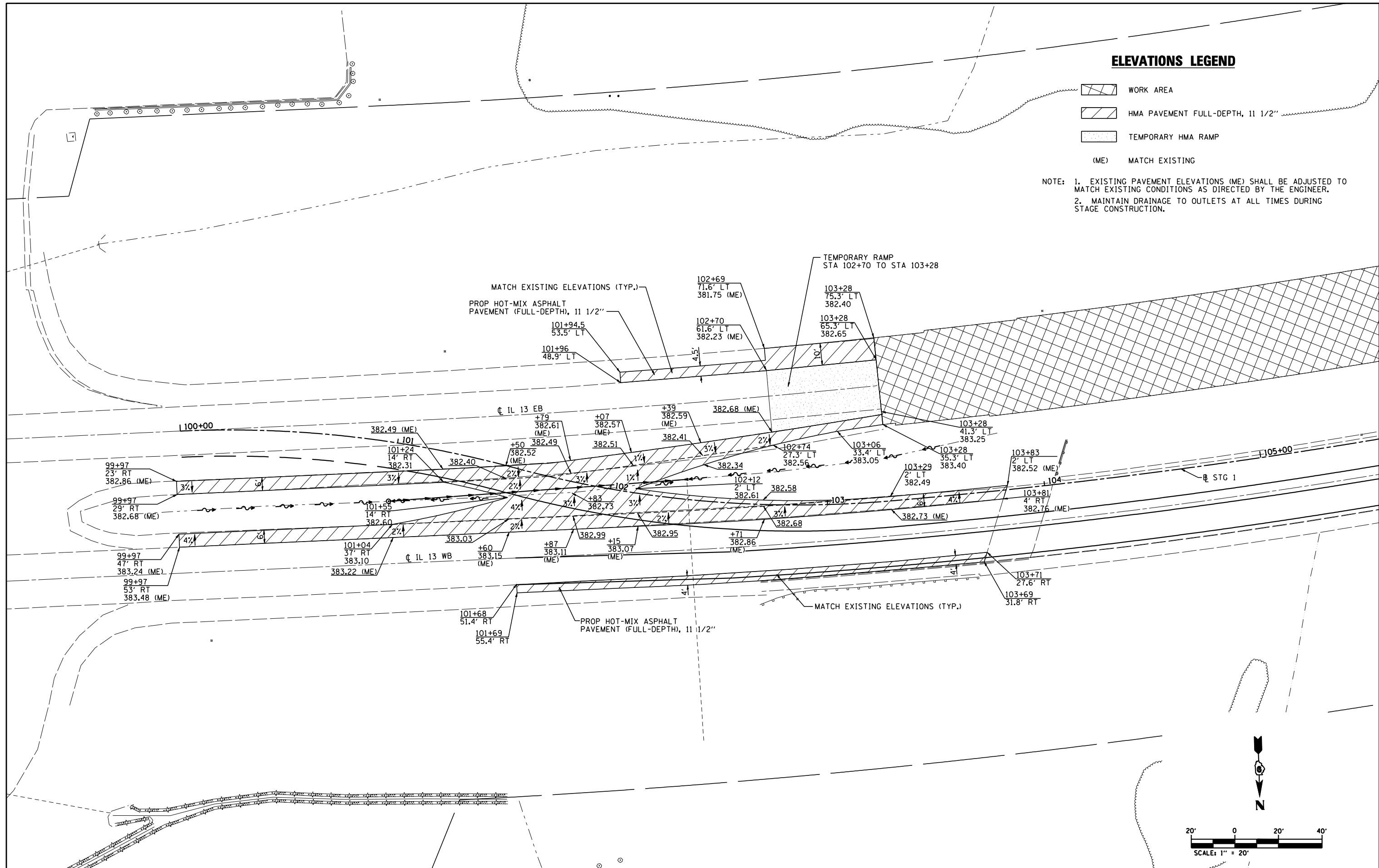


ELEVATIONS LEGEND

-  WORK AREA
-  HMA PAVEMENT FULL-DEPTH, 11 1/2"
-  TEMPORARY HMA RAMP
- (ME) MATCH EXISTING

NOTE: 1. EXISTING PAVEMENT ELEVATIONS (ME) SHALL BE ADJUSTED TO MATCH EXISTING CONDITIONS AS DIRECTED BY THE ENGINEER.
 2. MAINTAIN DRAINAGE TO OUTLETS AT ALL TIMES DURING STAGE CONSTRUCTION.



FILE NAME =	USER NAME = default	DESIGNED -	REVISED -
M:\28018\Microstation\0Phase1\1\0978056-sh1-staging1.dgn		DRAWN -	REVISED -
PLOT SCALE = 40.0000' / IN.		CHECKED -	REVISED -
PLOT DATE = 1/25/2012		DATE -	REVISED -

**STATE OF ILLINOIS
DEPARTMENT OF TRANSPORTATION**

STAGE 1 SHEETS ELEVATIONS	
SCALE: 1"=20'	SHEET NO. 2 OF 9 SHEETS STA. TO STA.

F.A.P. RTE.	SECTION	COUNTY	TOTAL SHEETS	SHEET NO.
331	112-11B-1	JACKSON	200	26
CONTRACT NO. 78056				
ILLINOIS FED. AID PROJECT				