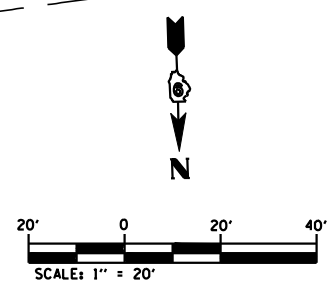
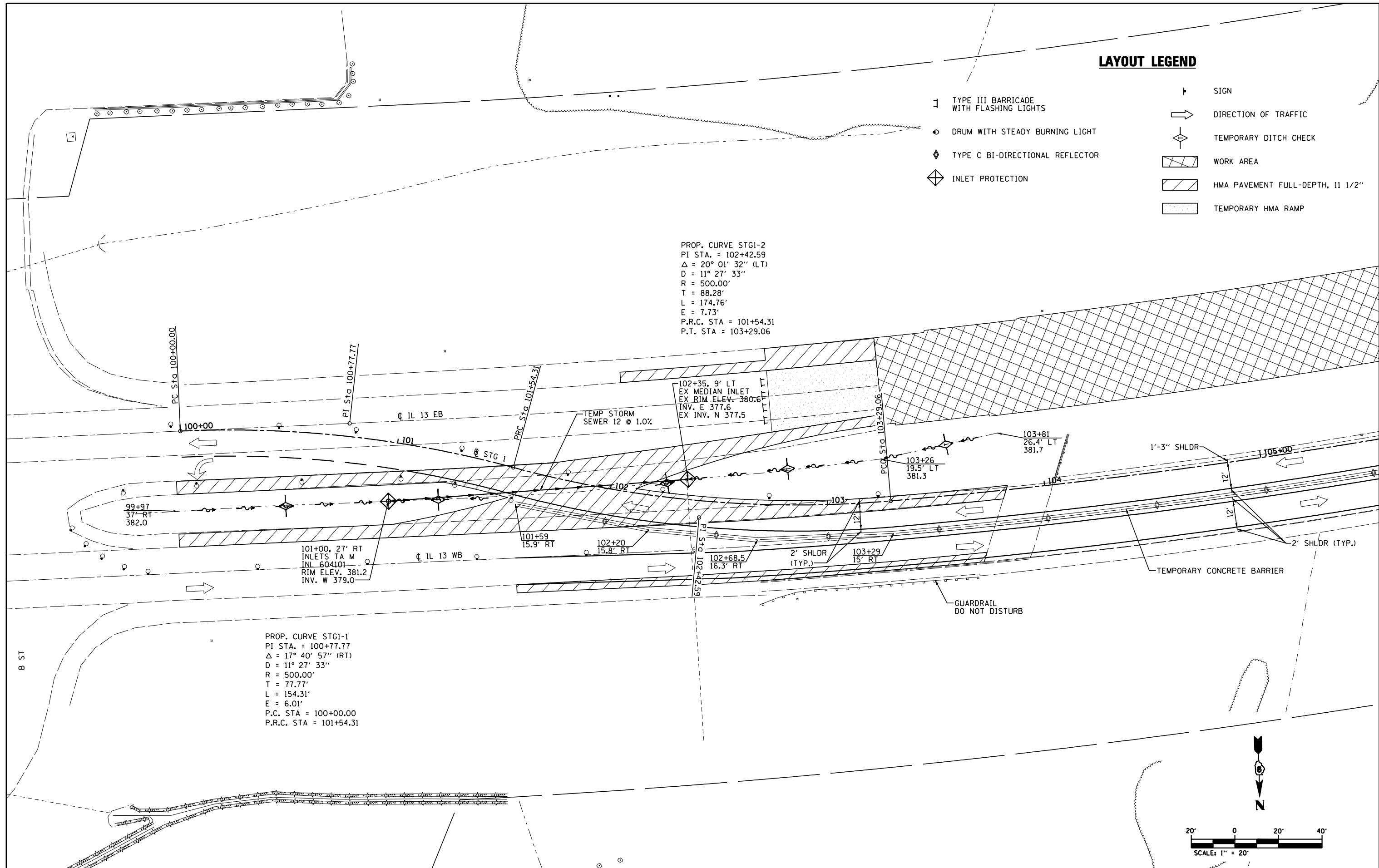


LAYOUT LEGEND

- 1 TYPE III BARRICADE WITH FLASHING LIGHTS
- DRUM WITH STEADY BURNING LIGHT
- ◇ TYPE C BI-DIRECTIONAL REFLECTOR
- ◇ INLET PROTECTION
- ↑ SIGN
- DIRECTION OF TRAFFIC
- ◇ TEMPORARY DITCH CHECK
- ▨ WORK AREA
- ▨ HMA PAVEMENT FULL-DEPTH, 11 1/2"
- ▨ TEMPORARY HMA RAMP

PROP. CURVE STG1-2
 PI STA. = 102+42.59
 Δ = 20° 01' 32" (LT)
 D = 11° 27' 33"
 R = 500.00'
 T = 88.28'
 L = 174.76'
 E = 7.73'
 P.R.C. STA = 101+54.31
 P.T. STA = 103+29.06

PROP. CURVE STG1-1
 PI STA. = 100+77.77
 Δ = 17° 40' 57" (RT)
 D = 11° 27' 33"
 R = 500.00'
 T = 77.77'
 L = 154.31'
 E = 6.01'
 P.C. STA = 100+00.00
 P.R.C. STA = 101+54.31



FILE NAME =	USER NAME = default	DESIGNED -	REVISED -
M:\28018\Microstation\0Phase1\1\0978056-sh1-staging1.dgn		DRAWN -	REVISED -
PLOT SCALE = 40.0000' / IN.		CHECKED -	REVISED -
PLOT DATE = 1/25/2012		DATE -	REVISED -

**STATE OF ILLINOIS
 DEPARTMENT OF TRANSPORTATION**

STAGE 1 SHEETS LAYOUT	
SCALE: 1"=20'	SHEET NO. 4 OF 9 SHEETS STA. TO STA.

F.A.P. RTE.	SECTION	COUNTY	TOTAL SHEETS	SHEET NO.
331	112-11B-1	JACKSON	200	28
CONTRACT NO. 78056				
ILLINOIS FED. AID PROJECT				