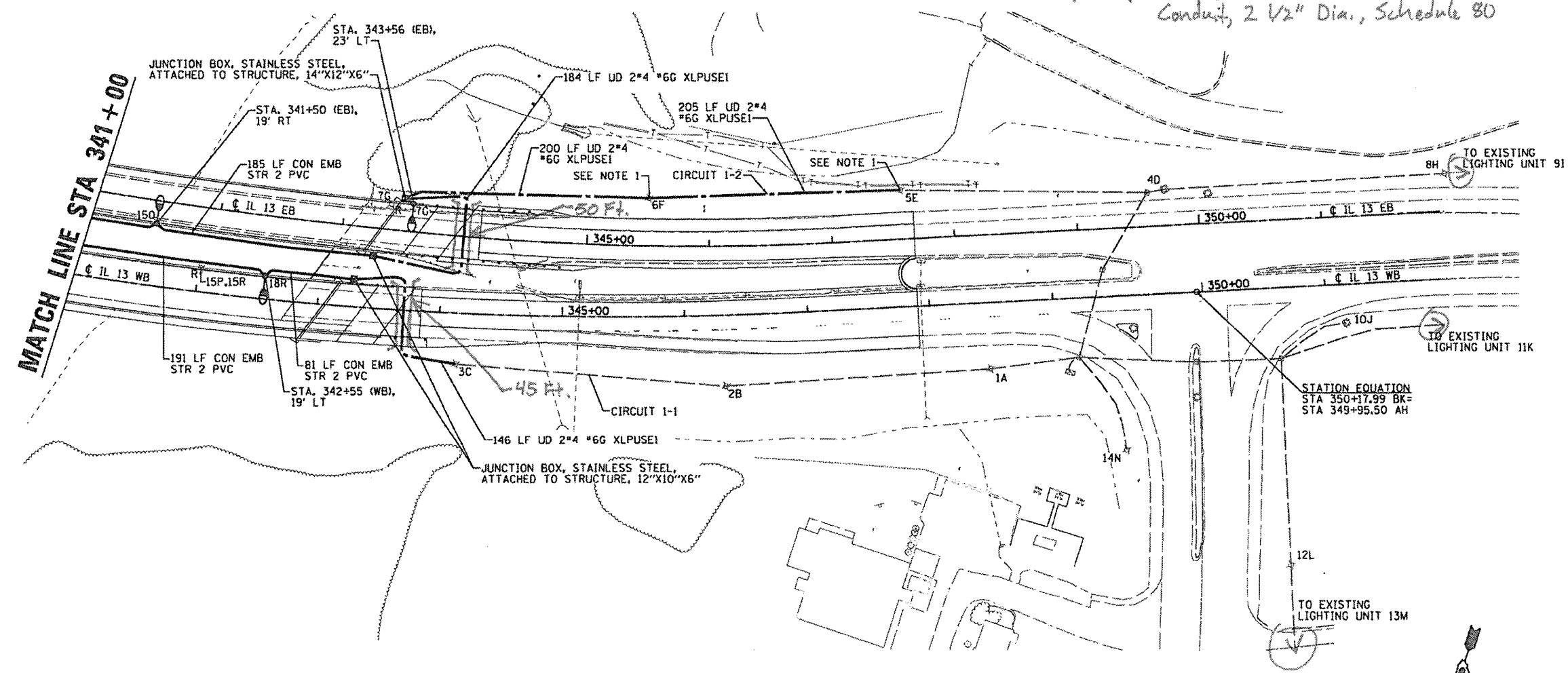


LIGHTING LEGEND

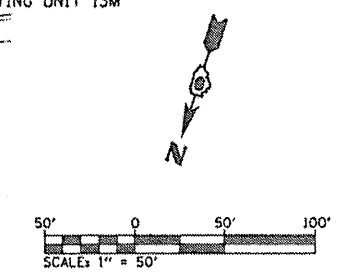
- ⊞ EXISTING LIGHTING CONTROLLER
- ⊞ EXISTING HANDHOLE
- ⊞ EXISTING LIGHTING UNIT TO REMAIN
- EXISTING UNIT DUCT
- ⊞ EXISTING LIGHTING UNIT TO BE REMOVED, NO SALVAGE
- ⊞ LIGHT POLE, ALUMINUM, 45 FT M.H., 15 FT DAVIT ARM WITH 250 W HPS LUMINAIRE, METAL FOUNDATION
- ⊞ LIGHT POLE, ALUMINUM, 40 FT M.H., 6 FT DAVIT ARM WITH 250 W HPS LUMINAIRE, MOUNTED TO BRIDGE PARAPET WALL
- PROPOSED UNIT DUCT, 600V, 2-1C NO. 4, 1/C NO. 6 GROUND, (XLP-TYPE USE), 1" DIA. POLYETHYLENE
- ELECTRIC CABLE IN CONDUIT, 600V (XLP-TYPE USE) 2-1/C NO. 4, 1/C NO. 6 GROUND, 2" DIA. PVC CONDUIT EMBEDDED IN STRUCTURE
- ⊞ JUNCTION BOX, STAINLESS STEEL, ATTACHED TO STRUCTURE, SIZE AS INDICATED

⊞ Underground Conduit, Coilable Nonmetallic Conduit, 2 1/2" Dia., Schedule 80



NOTE 1. DISCONNECT EXISTING ELECTRIC CABLES AT LIGHTING UNITS SE AND 6F. REMOVE CABLE AND DUCT TO A DEPTH OF 1 FT BELOW THE GROUND LEVEL AND BACKFILL THE VOID. ABANDON UNDERGROUND ELECTRIC CABLES AND DUCT. THE COST OF THIS WORK SHALL BE INCLUDED IN THE UNIT DUCT PAY ITEM.

NOTE 2. THE CONTRACTOR SHALL BE AWARE OF PERMANENT GROUND ANCHORS AND STEEL TIE RODS. NO ADDITIONAL COMPENSATION SHALL BE PROVIDED DUE TO CONFLICTS.



FILE NAME =	USER NAME = default	DESIGNED -	REVISED -
M:\28018\Microstation\BPhase1\0978056-light.dgn		DRAWN -	REVISED -
		CHECKED -	REVISED -
		DATE -	REVISED -

**STATE OF ILLINOIS
DEPARTMENT OF TRANSPORTATION**

**LIGHTING PLANS
LAYOUT**

SCALE: 1"=50' SHEET NO. 3 OF 7 SHEETS STA. TO STA.

F.A.P. RTE.	SECTION	COUNTY	TOTAL SHEETS	SHEET NO.
331	(12-1)B-1	JACKSON	200	46
CONTRACT NO. 78056				
ILLINOIS FED. AID PROJECT				