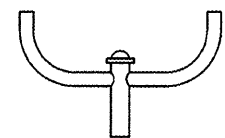
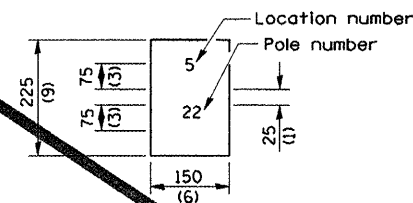
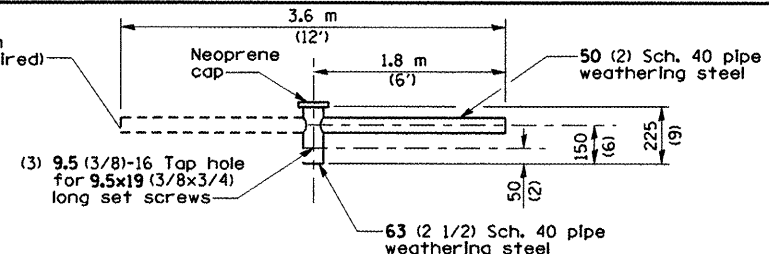


The contractor shall furnish and install a light pole identification of each new light pole as shown above, incidental to the respective light pole item. The numerals shall be 75 (3) series "O", black, serrated on silver-white type B pressure sensitive reflective sheeting conforming to the requirements of section 156.01 of the Standard Specifications for Traffic Control Items. The numerals shall conform to the FHWA "Standard Alphabets for Highway Signs".

The light pole identification shall be applied to sign base material as specified in section 1069.06 of the Standard Specifications, approximately 180 (7) above the adjacent pavement grade visible to approaching traffic in accordance with Highway Standard 720001.

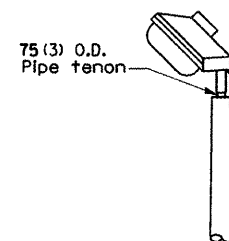


TWIN TENON

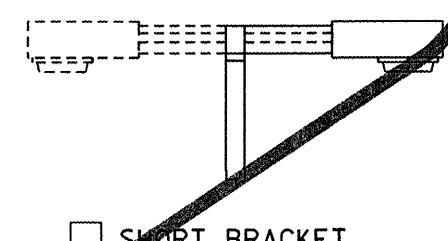


TENON MOUNT BRACKET ARM

NOTE: Single or twin arm assembly shall be tilted 3° above horizontal.

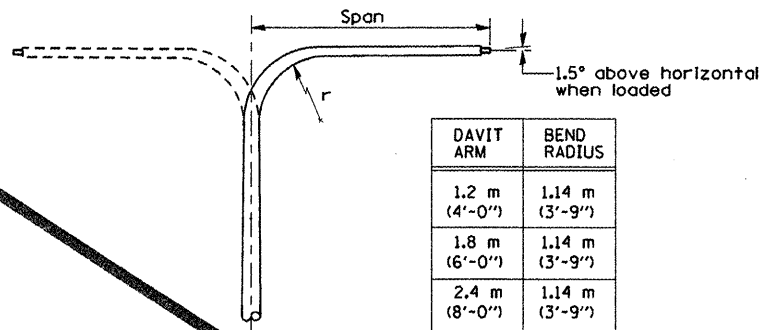


TENON



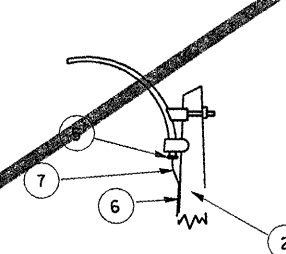
SHORT BRACKET

SHORT BRACKET - TWIN

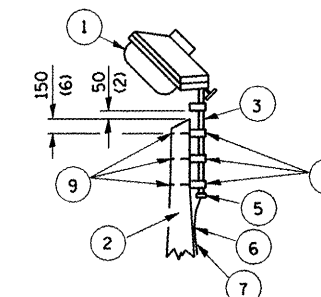


DAVIT ARM
 DAVIT ARM-TWIN

DAVIT ARM	BEND RADIUS
1.2 m (4'-0")	1.14 m (3'-9")
1.8 m (6'-0")	1.14 m (3'-9")
2.4 m (8'-0")	1.14 m (3'-9")
3.6 m (12'-0")	1.14 m (3'-9")



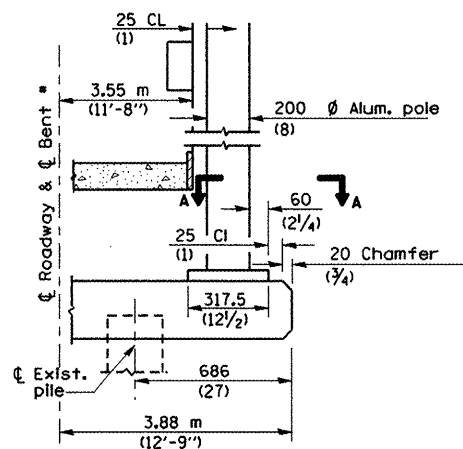
MAST ARM



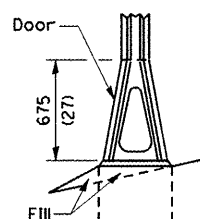
TENON

- 1 Luminaire
- 2 Wood pole, class 3 or better
- 3 63 (2 1/2) Galv. steel conduit
- 4 Single offset pole band
- 5 Conduit bushing
- 6 Cable clamps on 600 (24) centers
- 7 2/c #12 Type use cable
- 8 25 (1) Galv. steel conduit in length 3.0 m (10')

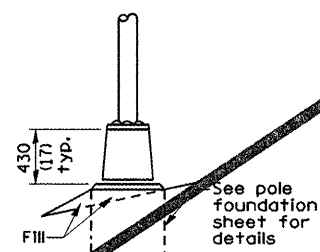
- 9 (16 5/8) Ø hot dipped galvanized bolt with flat washer & locknut (3 req'd)
- 10 Conduit clamps on 900 (36) centers
- 11 Unit duct
- 12 Threaded reducer
- 13 "C" Condulet, threaded
- 14 40 (1 1/2) Galv. steel conduit for 1 unit duct or 75 (3) galv. steel conduit for 2 or 3 unit ducts.



BENT # (Looking)

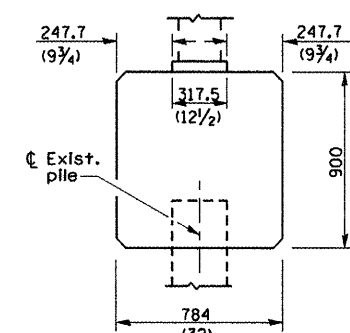


STAINLESS STEEL FLAIR BASE

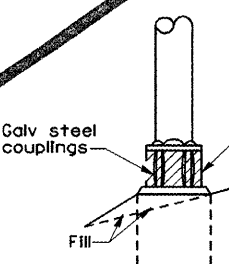


TRANSFORMER BASE

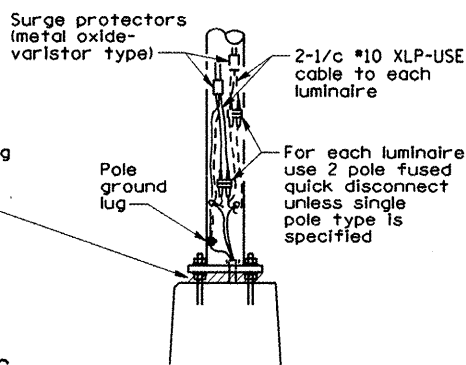
FRANGIBLE



BRIDGE PIER MOUNT



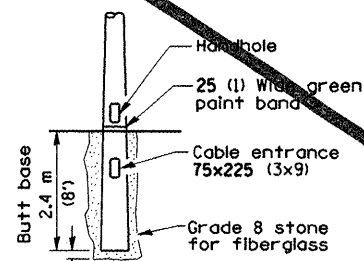
BREAKAWAY COUPLING



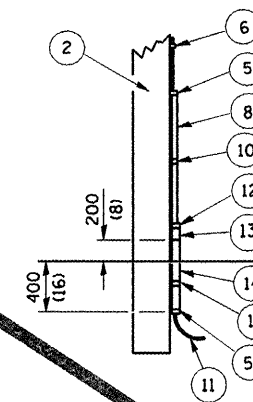
ANCHOR

METAL OR CONCRETE

Details for underground distribution if required



BUTT BASE



POLE WOOD

POLE LENGTH	DEPTH IN GROUND
19.8 m (65')	3.6 m (12')
18.0 m (60')	3.0 m (10')
16.8 m (55')	2.7 m (9')
16.0 m (50')	2.4 m (8')
13.7 m (45')	2.1 m (7')
12.0 m (40')	2.0 m (6.5')
10.7 m (35')	1.8 m (6')
9.0 m (30')	1.7 m (5.5')

POLE STANDARDS

All dimensions are in millimeters (inches) unless otherwise shown.

FILE NAME =	USER NAME = default	DESIGNED -	REVISED -
m:\28018\mrcrostation\0phases\0978056-sht-light.dgn		DRAWN -	REVISED -
		CHECKED -	REVISED -
		DATE -	REVISED -

**STATE OF ILLINOIS
DEPARTMENT OF TRANSPORTATION**

LIGHTING PLANS DETAILS	
SCALE:	SHEET NO. 6 OF 7 SHEETS STA. TO STA.

F.A.P. RTE. 331	SECTION (12-11B-1)	COUNTY JACKSON	TOTAL SHEET NO. 200	SHEET NO. 49
ILLINOIS FED. AID PROJECT				CONTRACT NO. 78056