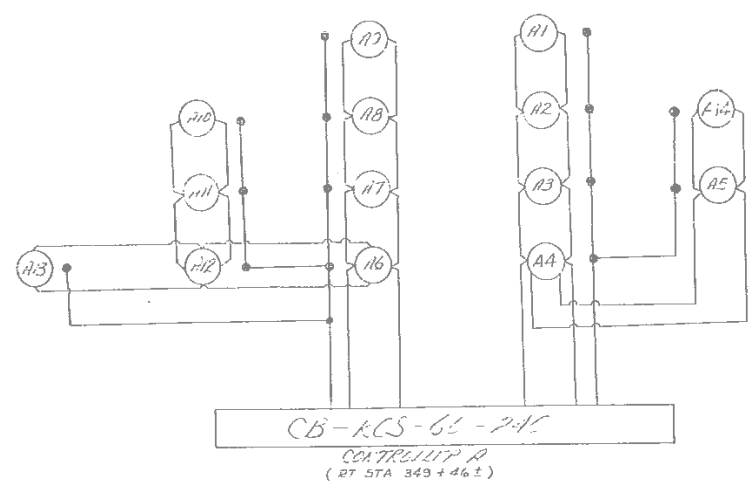
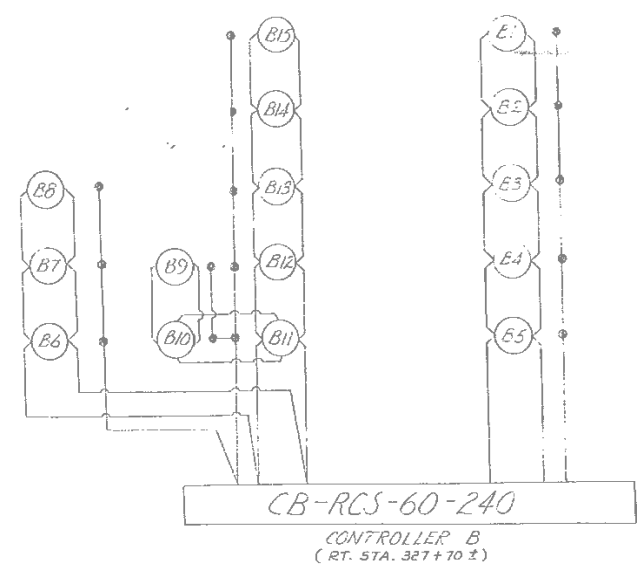


WIRING DIAGRAM



WIRING DIAGRAM



SCHEDULE OF CONDUIT (ILLUMINATION)

STATION	GALV. STEEL CONDUIT 1 1/2" DIA. 2" LIN. FT.	GALV. STEEL CONDUIT ATTACHED TO STRUCTURE 2" LIN. FT.
B+60 (E WILLIAMS ST.)	77	
11-25 (E WILLIAMS ST.)	71	
NORTH LAVES-FA. 14		
B27+70	44	
LT. 327+70	52	
RT. 333+22	74	
LT. 333+22	77	
RT. 333+55 TO LT. 340+15		178
LT. 342+25 TO RT. 342+27		175
355+23	70	
LT. 355+30	6	
LT. 356+20	28	
LT. 357A+00	43	
LT. 357+25 (F.A. RTE 10.)	57	
2+77 (WILLIAMS ST.)	43	
TOTALS	635	203

POLE LOCATION

POLE NO.	PATTERN	STATION	MAST ARM	SETBACK*
A1	III	LT. 357+50 (FA. 14)	8'	14'
A2	III	LT. 355+40 (FA. 14)	8'	14'
A3	III	LT. 353+30 (FA. 14)	8'	20'
A4	III	LT. 351+60 (FA. 101)	8'	20'
A5	III	LT. 327+50 (FA. 101)	8'	20'
A6	III	RT. 349+40 (FA. 14)	8'	20'
A7	III	RT. 347+00 (FA. 14)	8'	20'
A8	III	RT. 344+45 (FA. 14)	8'	20'
A9	II & III	LT. 342+00 (FA. 14)	4'	ON PARAPET
A10	III	LT. 342+45 (FA. 14)	8'	16'
A11	III	LT. 340+15 (FA. 14)	8'	14'
A12	III	LT. 348+85 (FA. 14)	8'	14'
A13	III	LT. 351+10 (FA. 14)	8'	14'
A14	III	LT. 326+30 (FA. 101)	8'	20'

POLE LOCATION

POLE NO.	PATTERN	STATION	MAST ARM	SETBACK*
B1	II & III	LT. 340+15 (FA. 14)	4'	ON PARAPET
B2	III	RT. 337+50 (FA. 14)	8'	14'
B3	III	RT. 334+80 (FA. 14)	8'	20'
B4	III	RT. 332+20 (FA. 14)	8'	20'
B5	III	RT. 330+80 (FA. 14)	8'	20'
B6	III	RT. 327+20 (FA. 14)	8'	20'
B7	III	RT. 324+75 (FA. 14)	8'	20'
B8	III	RT. 322+15 (FA. 14)	8'	20'
B9	III	LT. 323+25 (FA. 14)	8'	20'
B10	III	LT. 325+90 (FA. 14)	8'	20'
B11	III	LT. 323-30 (FA. 14)	8'	20'
B12	III	LT. 355+75 (FA. 14)	8'	20'
B13	III	LT. 333+35 (FA. 14)	8'	20'
B14	III	LT. 335+95 (FA. 14)	8'	20'
B15	III	LT. 333+70 (FA. 14)	8'	14'

* DISTANCE FROM EDGE PAVEMENT TO CENTER OF POLE FOUNDATION (SEE SHT. NO. 91...)

F.A. RTE. 14 SEC. 12-2 JACKSON CO. (ILLUMINATION)

FILE NAME = D978056-sht-ex-light.dgn

USER NAME = default
PLOT SCALE = 40.0000" / IN.
PLOT DATE = 1/25/2012

DESIGNED -
DRAWN -
CHECKED -
DATE -

REVISED -
REVISED -
REVISED -
REVISED -

STATE OF ILLINOIS
DEPARTMENT OF TRANSPORTATION

EXISTING LIGHTING PLANS
(FOR INFORMATION ONLY)

SCALE: SHEET NO. 1 OF 9 SHEETS STA. TO STA.

F.A.P. RTE.	SECTION	COUNTY	TOTAL SHEETS	SHEET NO.
331	(12-1) B-1	JACKSON	200	51
CONTRACT NO. 78056				
ILLINOIS FED. AID PROJECT				