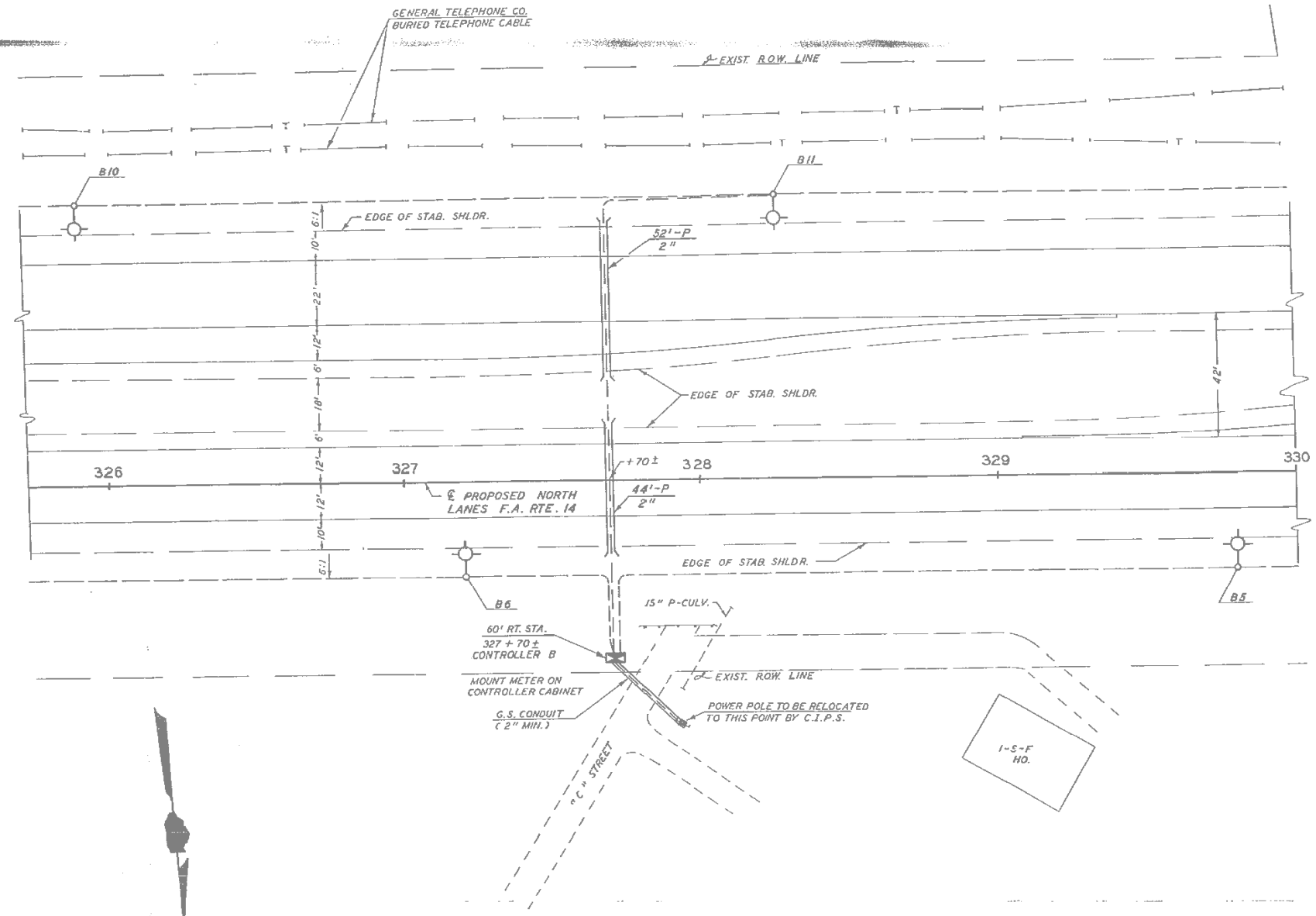


SECTION	STATE	COUNTY	TOTAL SHEETS	SHEET NO.
EA. 14 12-2	JACKSON	204	84	



F.A. RTE. 14 SEC. 12-2 JACKSON CO. (ILLUMINATION) STA. 325+73 TO 330+00



FILE NAME = D978056-shr-ex-light.dgn	USER NAME = default	DESIGNED -	REVISED -	STATE OF ILLINOIS DEPARTMENT OF TRANSPORTATION	EXISTING LIGHTING PLANS (FOR INFORMATION ONLY)			F.A.P. RTE. 331	SECTION (12-1) B-1	COUNTY JACKSON	TOTAL SHEETS 200	SHEET NO. 53
	PLOT SCALE = 40.0000' / IN.	DRAWN -	REVISED -		SCALE:	SHEET NO. 3 OF 9 SHEETS	STA.	TO STA.	CONTRACT NO. 78056			
	PLOT DATE = 1/25/2012	CHECKED -	REVISED -		ILLINOIS FED. AID PROJECT							
		DATE -	REVISED -									