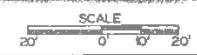
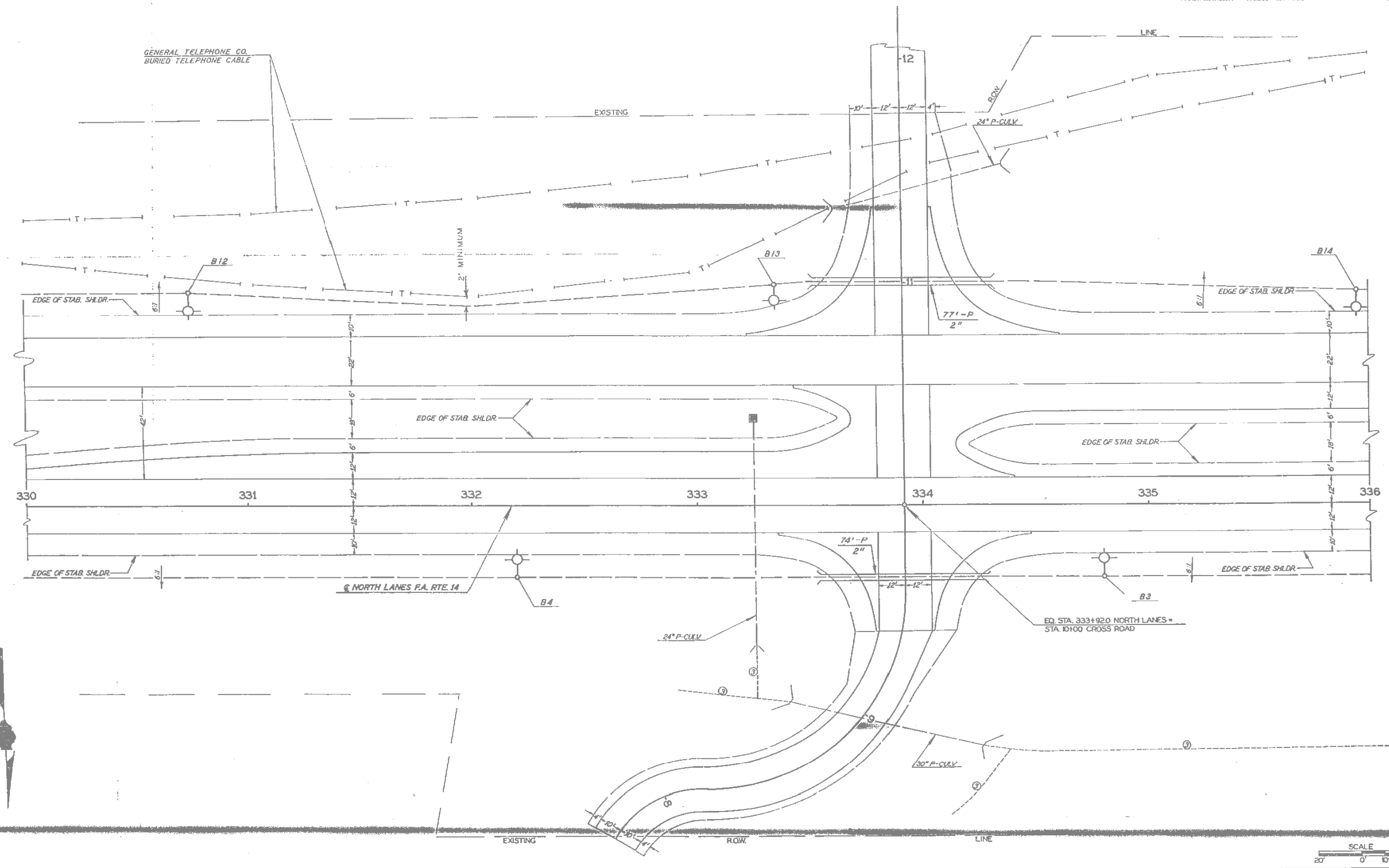


PROJECT NO.	SECTION	COUNTY	SHEET NO.
FA. 14	12-2	JACKSON	204
REV. NO.	DATE	BY	SCALE
			85



F.A. RTE. 14 SECTION 12-2 JACKSON COUNTY (ILLUMINATION) STA. 330 +00 TO 336 +00

FILE NAME =  
D978056-sht-ex-light.dgn

USER NAME = default	DESIGNED -	REVISED -
PLOT SCALE = 40.0000' / IN.	DRAWN -	REVISED -
PLOT DATE = 1/25/2012	CHECKED -	REVISED -
	DATE -	REVISED -

**STATE OF ILLINOIS  
DEPARTMENT OF TRANSPORTATION**

**EXISTING LIGHTING PLANS  
(FOR INFORMATION ONLY)**

SCALE: SHEET NO. 4 OF 9 SHEETS STA. TO STA.

F.A.P. RTE.	SECTION	COUNTY	TOTAL SHEETS	SHEET NO.
331	(12-1) B-1	JACKSON	200	54
CONTRACT NO. 78056				

ILLINOIS FED. AID PROJECT