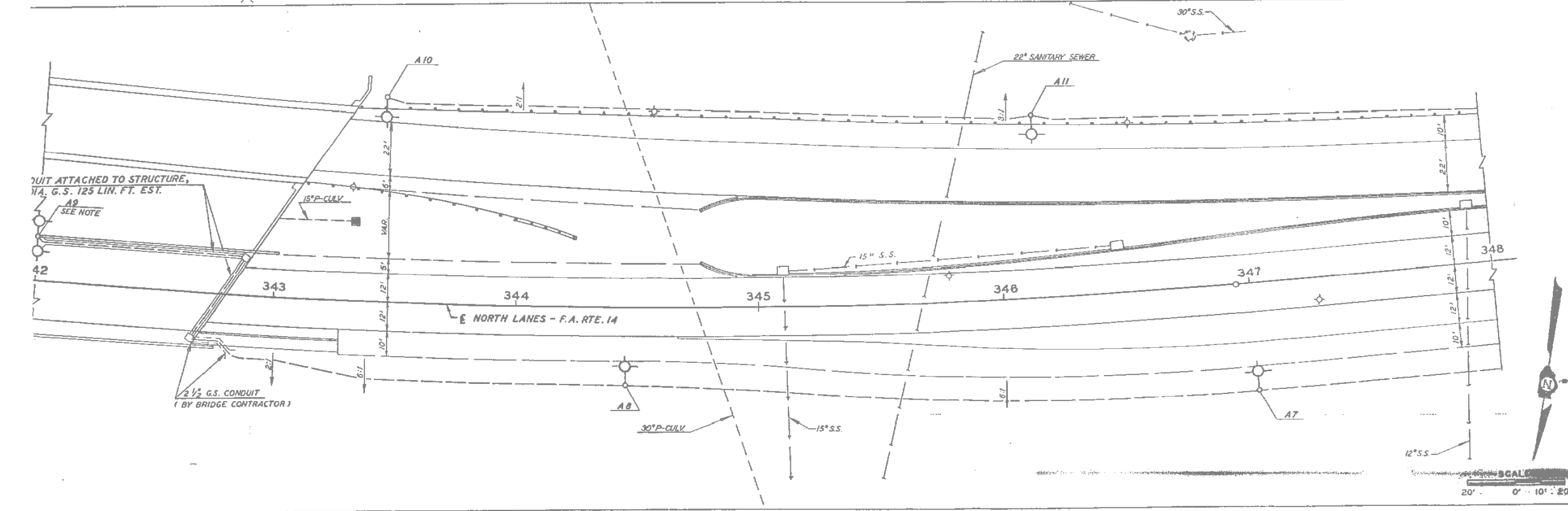
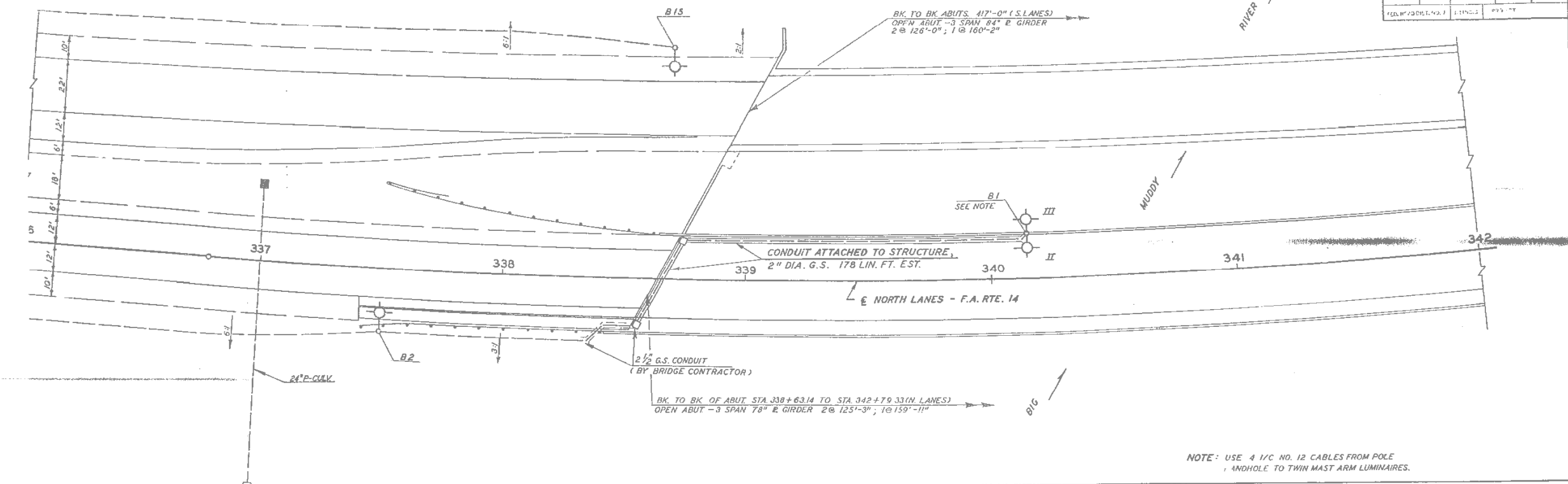
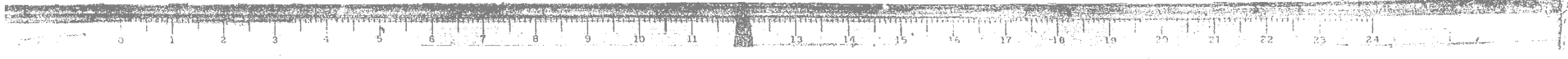


ROUTE NO.	SEC.	COUNTY	TOTAL SHEETS	SHEET NO.
F.A. 14	12-2	JACKSON	204	86
FILE NO.	DATE	DESIGNED	BY	BY



F.A. RTE. 14 SEC. 12-2 JACKSON COUNTY (ILLUMINATION) STA. 336+00 TO 348+00



FILE NAME = D978056-sht-ex-light.dgn	USER NAME = default	DESIGNED -	REVISED -
		DRAWN -	REVISED -
	PLOT SCALE = 40.0000' / IN.	CHECKED -	REVISED -
	PLOT DATE = 1/25/2012	DATE -	REVISED -

**STATE OF ILLINOIS
DEPARTMENT OF TRANSPORTATION**

**EXISTING LIGHTING PLANS
(FOR INFORMATION ONLY)**

SCALE: SHEET NO. 5 OF 9 SHEETS STA. TO STA.

F.A.P. RTE.	SECTION	COUNTY	TOTAL SHEETS	SHEET NO.
331	(12-1) B-1	JACKSON	200	55
CONTRACT NO. 78056				
ILLINOIS FED. AID PROJECT				