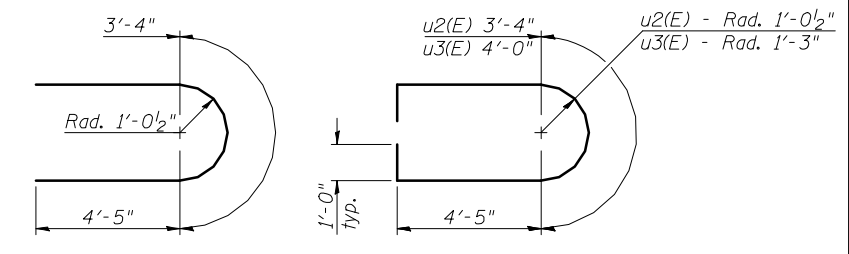
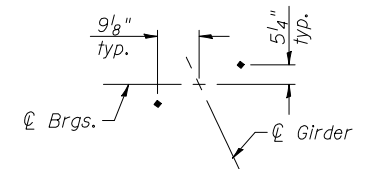
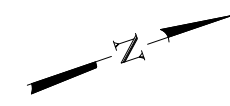


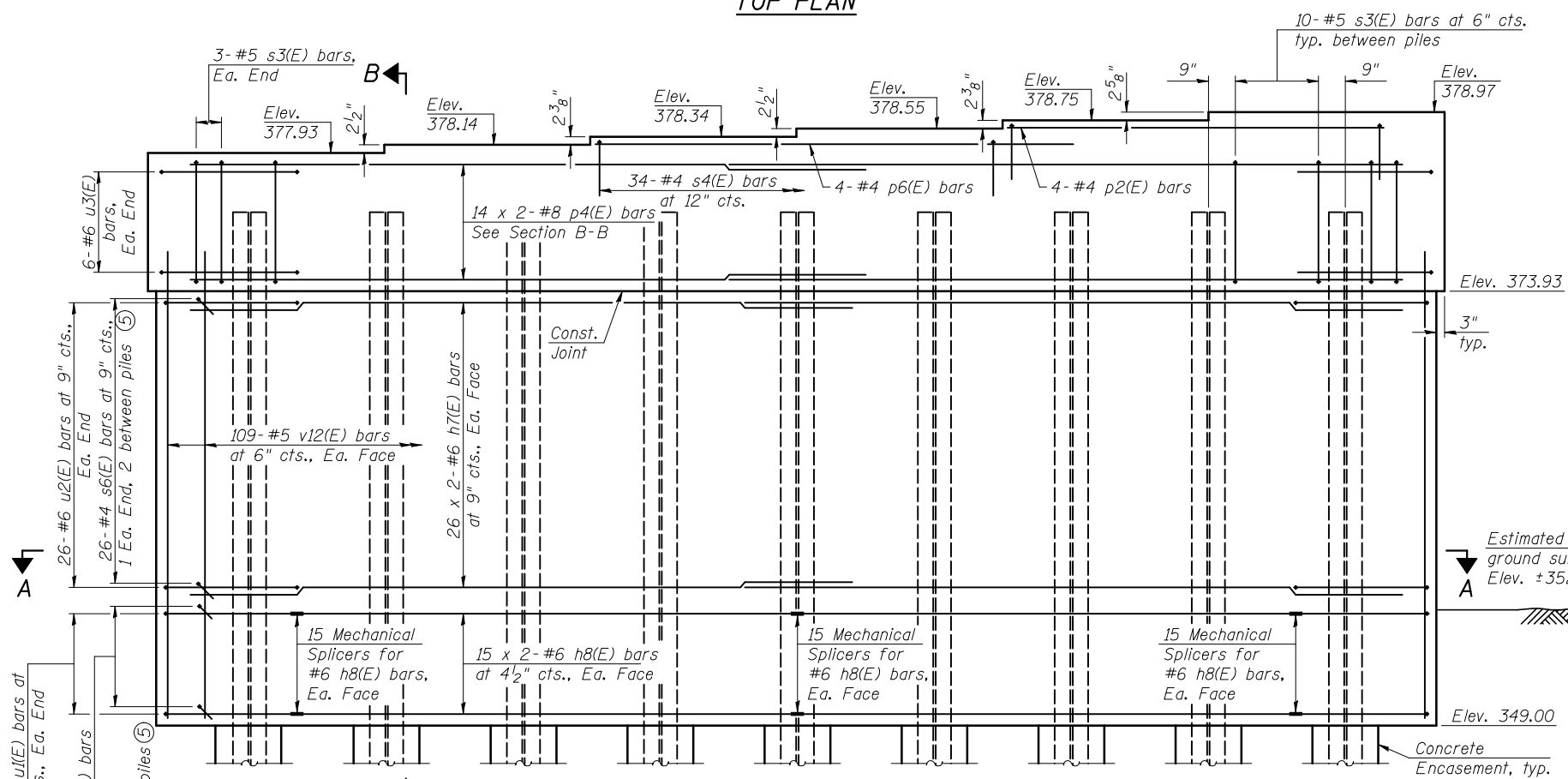
TOP PLAN



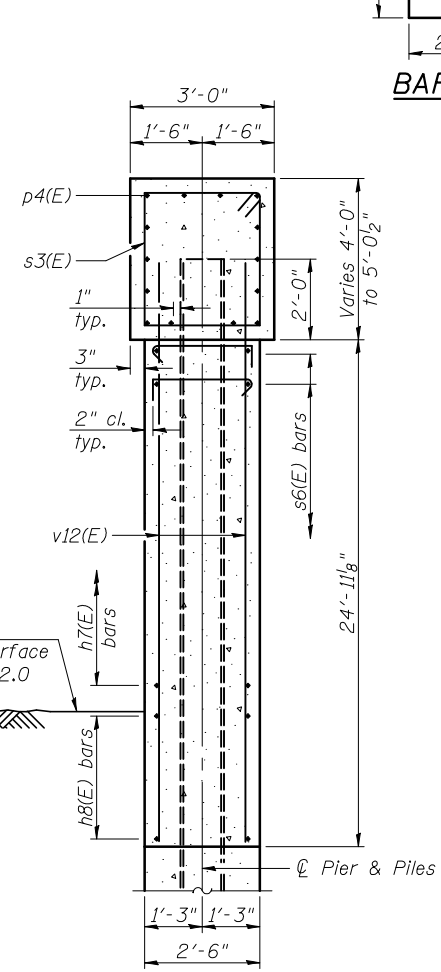
BAR u1(E)
BARS u2(E) & u3(E)
BAR s3(E)
BAR s4(E)
BAR s6(E)



ANCHOR BOLT LAYOUT (4)



ELEVATION
(Looking West)

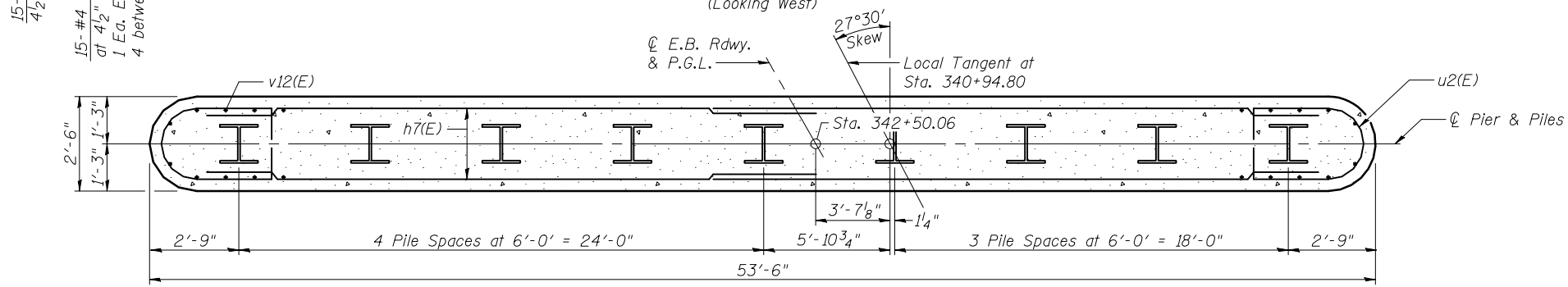


SECTION B-B

MIN. BAR LAP
 #8 bar = 7'-8"
 #6 bar = 4'-5"

BILL OF MATERIAL

Bar	No.	Size	Length	Shape
h7(E)	104	#6	27'-9"	—
h8(E)	60	#6	21'-1"	—
p2(E)	4	#4	16'-7"	—
p4(E)	28	#8	29'-4"	—
p6(E)	4	#4	18'-10"	—
s3(E)	86	#5	13'-7"	□
s4(E)	34	#4	6'-8"	□
s5(E)	-	-	-	-
s6(E)	978	#4	3'-3"	┌
u1(E)	30	#6	12'-2"	U
u2(E)	52	#6	14'-2"	U
u3(E)	12	#6	14'-10"	U
v12(E)	218	#5	26'-8"	—
Structure Excavation		Cu. Yd.	42	
Concrete Structures		Cu. Yd.	149.0	
Concrete Encasement		Cu. Yd.	4.9	
Reinforcement Bars, Epoxy Coated		Pound	20,000	
Furnishing Steel Piles HP14x73		Foot	720	
Driving Piles		Foot	720	
Test Pile Steel HP14x73		Each	1	
Mechanical Splicers		Each	90	



SECTION A-A

PILE DATA

Type: Steel HP 14x73
 Nominal Required Bearing: 578 kips
 Factored Resistance Available: 320 kips
 Est. Length: 90 ft
 No. Production Piles: 8
 No. Test Piles: 1

- Notes:
- ① Pour steps monolithically with cap.
 - ② For details of Bar Splicers, see sheet 47 of 53.
 - ③ For details of piles and Concrete Encasement, see sheet 46 of 53.
 - ④ Space reinforcement in cap to miss anchor bolts.
 - ⑤ Alternate s6(E) bars end for end as shown in Section B-B.
 - ⑥ Bars indicated thus 14 x 2-#8 etc. indicates 14 lines of bars with 2 lengths per line.



USER NAME =	DESIGNED - JAD	REVISED -
CHECKED - DGL	REVISIONS -	
DRAWN - JAD	REVISIONS -	
CHECKED - MAG	REVISIONS -	

STATE OF ILLINOIS
DEPARTMENT OF TRANSPORTATION

PIER 4 DETAILS
STRUCTURE NO. 039-0075 (E.B.)
 SHEET NO. 45 OF 53 SHEETS

F.A.P. RTE.	SECTION	COUNTY	TOTAL SHEETS	SHEET NO.
331	(12-11B-1)	JACKSON	200	104
CONTRACT NO. 78056				
ILLINOIS FED. AID PROJECT				