

SOUTH EDGE OF SHOULDER

Location	Station	Offset	Theoretical Grade Elevations
E. End Appr. Slab 1	337+88.98	-18.00	383.09
A1	337+99.05	-18.00	383.12
A2	338+09.11	-18.00	383.16
W. End Appr. Slab 1	338+19.20	-18.00	383.20

SOUTH EDGE OF PAVEMENT

Location	Station	Offset	Theoretical Grade Elevations
E. End Appr. Slab 1	337+86.57	-12.00	383.23
A1	337+96.62	-12.00	383.26
A2	338+06.66	-12.00	383.30
W. End Appr. Slab 1	338+16.72	-12.00	383.34

☉ W.B. ROADWAY & P.G.L.

Location	Station	Offset	Theoretical Grade Elevations
E. End Appr. Slab 1	337+81.79	0.00	383.52
A1	337+91.79	0.00	383.55
A2	338+01.79	0.00	383.58
W. End Appr. Slab 1	338+11.79	0.00	383.62

NORTH EDGE OF PAVEMENT

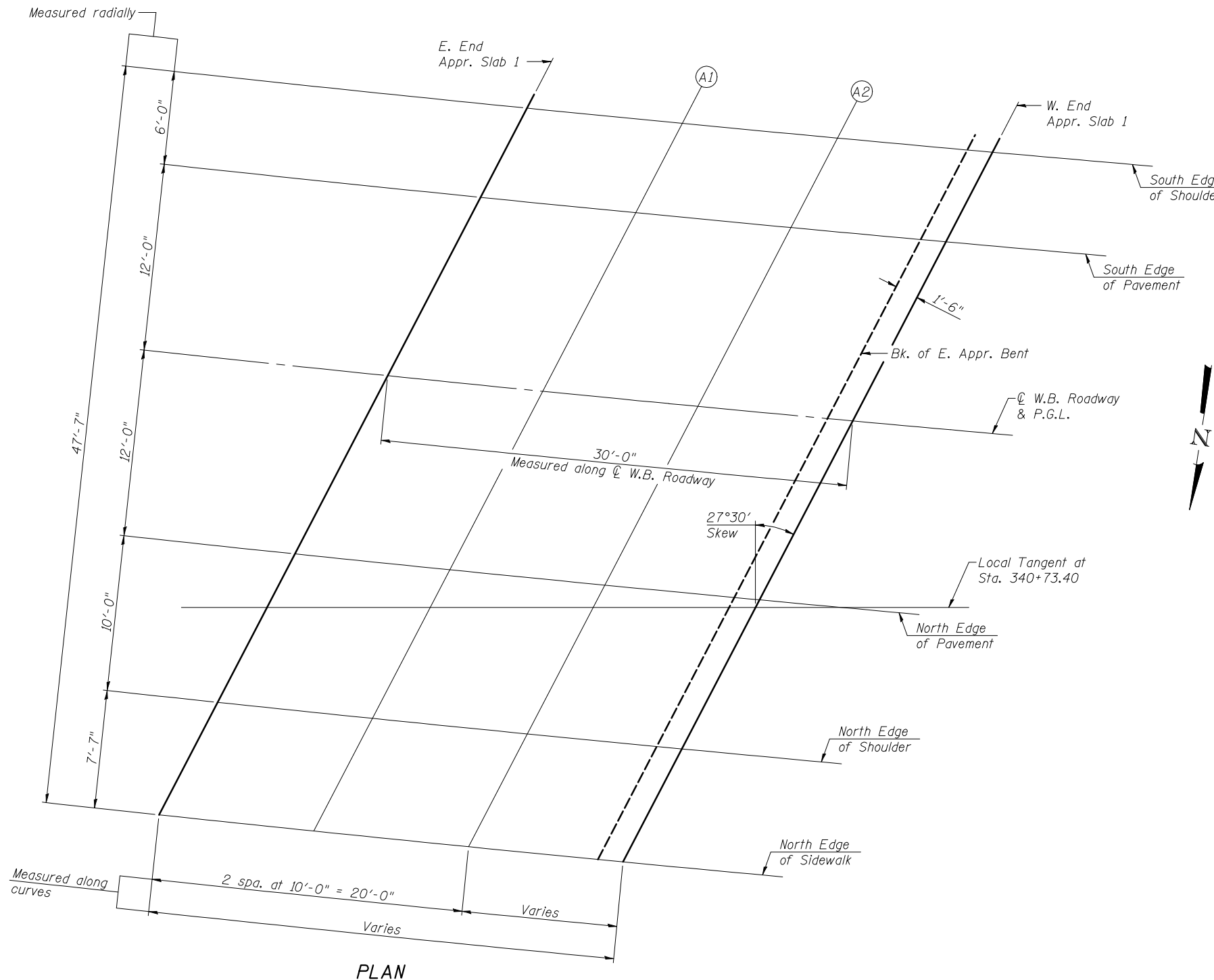
Location	Station	Offset	Theoretical Grade Elevations
E. End Appr. Slab 1	337+77.05	12.00	383.81
A1	337+87.01	12.00	383.83
A2	337+96.97	12.00	383.86
W. End Appr. Slab 1	338+06.90	12.00	383.90

NORTH EDGE OF SHOULDER

Location	Station	Offset	Theoretical Grade Elevations
E. End Appr. Slab 1	337+73.13	22.00	384.05
A1	337+83.06	22.00	384.07
A2	337+92.98	22.00	384.10
W. End Appr. Slab 1	338+02.87	22.00	384.13

NORTH EDGE OF SIDEWALK

Location	Station	Offset	Theoretical Grade Elevations
E. End Appr. Slab 1	337+70.18	29.58	383.96
A1	337+80.08	29.58	383.98
A2	337+89.97	29.58	384.01
W. End Appr. Slab 1	337+99.82	29.58	384.04



USER NAME =	DESIGNED - JAD	REVISED -
CHECKED - DGL	REVISED -	
PLOT SCALE =	DRAWN - MAG	REVISED -
PLOT DATE =	CHECKED - JAD	REVISED -

**STATE OF ILLINOIS
DEPARTMENT OF TRANSPORTATION**

**TOP OF APPROACH SLAB 1 ELEVATIONS
STRUCTURE NO. 039-0076 (W.B.)**

SHEET NO. 9 OF 53 SHEETS

F.A.P. RTE.	SECTION	COUNTY	TOTAL SHEETS	SHEET NO.
331	(12-11B-1)	JACKSON	200	121
CONTRACT NO. 78056				
ILLINOIS FED. AID PROJECT				