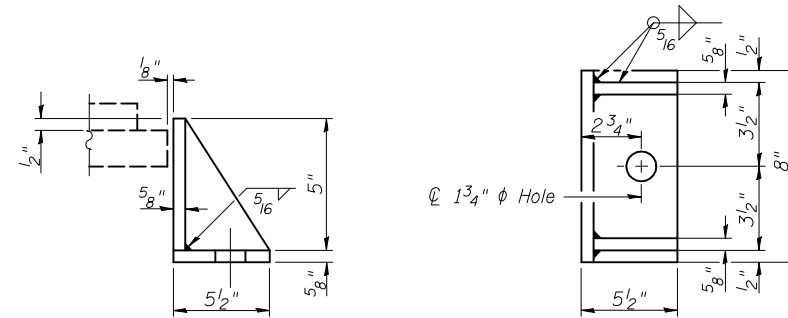
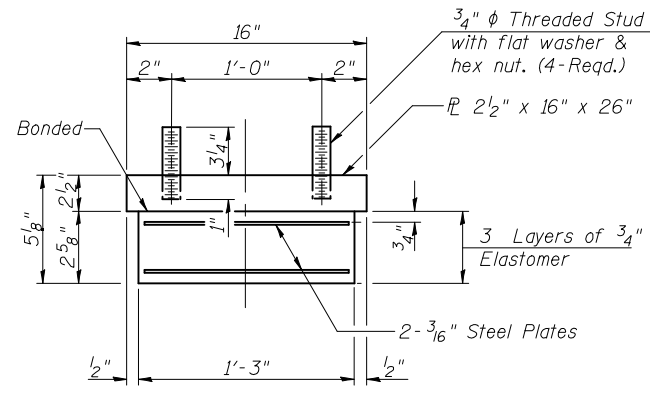


ELEVATION

SECTION C-C

**FIXED BEARING
(PIER 1, 3, & 4)**



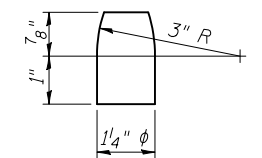
BEARING ASSEMBLY #8

SIDE RETAINER #9

**TYPE I ELASTOMERIC EXP. BRG.
(PIER 2)**

BEARING SHIM PLATES

	Girder 1W	Girder 2W	Girder 3W	Girder 4W	Girder 5W	Girder 6W
Pier 2	-	-	-	-	1/4"	-



PINTLE

- Notes:
- Anchor bolts shall be ASTM F1554 all-thread or an Engineer-approved alternate material of the grades and diameters specified. The corresponding specified grade of AASHTO M314 anchor bolts may be used in lieu of ASTM F1554.
 - Anchor bolts at fixed bearings may be either cast in place or installed in holes drilled after the supported member is in place.
 - Anchor bolts for side retainers may be cast in place or installed in holes drilled before or after members are in place.
 - Drilled and set anchor bolts shall be installed according to Article 521.06 of the Standard Specifications.
 - Side retainers and other steel members required for the elastomeric bearing assembly shall be included in the cost of Elastomeric Bearing Assembly, Type I.
 - The structural steel plates of the Bearing Assembly shall conform to the requirements of AASHTO M 270 Grade 50W.
 - Two 1/8" adjusting shims shall be provided for each bearing in addition to all other plates or shims and placed as shown on bearing details.
 - Shim plates shall not be placed under Bearing Assembly.
 - Equivalent rolled angle with stiffeners will be allowed in lieu of welded plates.
 - The anchor bolt sizes and grades shown constitute a calculated seismic structural fuse. Substitution of higher diameter and/or grade anchor bolts will not be allowed.

BILL OF MATERIAL

Item	Unit	Total
Elastomeric Bearing Assembly Type I	Each	6
Anchor Bolts, 1"	Each	36
Anchor Bolts, 1 1/2"	Each	12