

STATE OF ILLINOIS
DEPARTMENT OF TRANSPORTATION
DIVISION OF HIGHWAYS

**PROPOSED
HIGHWAY PLANS**

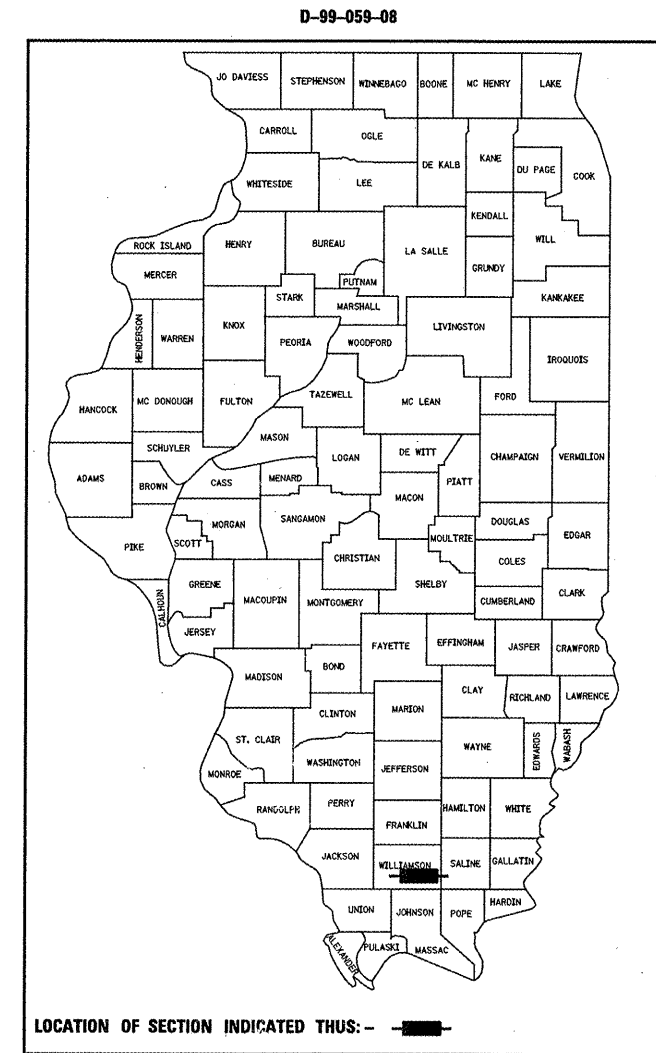
**ROUTE SBI 13B (OLD IL 13)
SECTION 6B-1
PROJECT ACF-0013(011)
STRUCTURE REPLACEMENT OVER BRANCH
OF LITTLE CRAB ORCHARD CREEK
WILLIAMSON COUNTY**

C-99-077-08

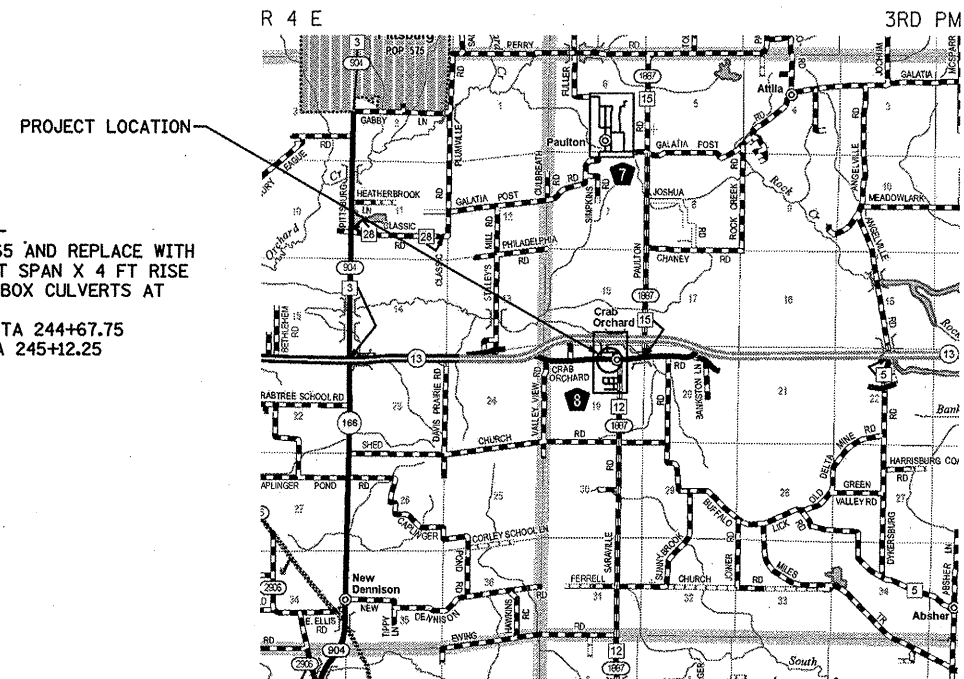
S.B.I.	SECTION	COUNTY	TOTAL SHEETS	SHEET NO.
13B	6B-1	WILLIAMSON	19	1
		ILLINOIS	CONTRACT NO. 78090	

INDEX OF SHEETS

- 1 COVER SHEET
- 2 GENERAL NOTES AND HIGHWAY STANDARDS
- 3 SUMMARY OF QUANTITIES
- 4 TYPICAL SECTIONS
- 5 SCHEDULE OF QUANTITIES
- 6 ALIGNMENT, TIES AND BENCHMARKS
- 7 PLAN AND PROFILE
- 8 DETOUR ROUTE AND PAVEMENT MARKING PLAN
- 9 EROSION CONTROL & DRAINAGE PLAN AND DETAILS
- 10 RIGHT OF WAY PLAN
- 11-14 CULVERT DETAILS
- 15 STANDARDS 9-12, 9-79 AND TYPICAL LIMITS OF POROUS GRANULAR EMBANKMENT
- 16-19 CROSS SECTIONS



DESIGN CLASS: LOCAL ROAD, NON-URBAN
ADT: 1470 (2011), 1800 (2031)
11.56% TRUCKS
DESIGN SPEED: 35 MPH



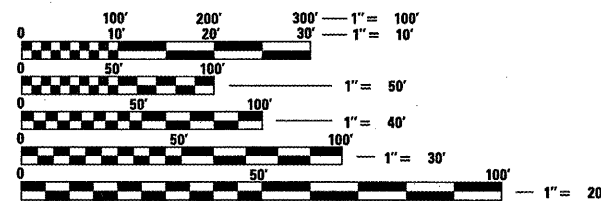
PROJECT DESCRIPTION -
REMOVE EX SN 100-0065 AND REPLACE WITH
SN 100-2023 2 @ 10 FT SPAN X 4 FT RISE
REINFORCED CONCRETE BOX CULVERTS AT
C STA 244+90
IMPROVEMENT BEGINS STA 244+67.75
IMPROVEMENT ENDS STA 245+12.25

AREA LOCATION PLAN



SCALE

GROSS LENGTH = 44.5 FT. = 0.008 MILE
NET LENGTH = 44.5 FT. = 0.008 MILE

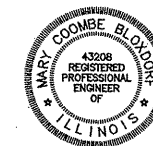


FULL SIZE PLANS HAVE BEEN PREPARED USING STANDARD
ENGINEERING SCALES. REDUCED SIZED PLANS WILL NOT
CONFORM TO STANDARD SCALES. IN MAKING MEASUREMENTS
ON REDUCED PLANS, THE ABOVE SCALES MAY BE USED.

J.U.L.I.E.
JOINT UTILITY LOCATION INFORMATION FOR EXCAVATION
1-800-892-0123
OR 811

PROJECT ENGINEER DAVID PICHE (618) 549-2171
CO. UNIT ROAD DIST.

CONTRACT NO. 78090



Mary Coombe Bloxdorf
ILLINOIS PROFESSIONAL NO 43208
EXPIRES 11-30-13
DATE: 12-23-11

CB Coombe-Bloxdorf P.C.
-CIVIL ENGINEERS-
-STRUCTURAL ENGINEERS-
-LAND SURVEYORS-
Design Firm License No. 184-002703

STATE OF ILLINOIS
DEPARTMENT OF TRANSPORTATION
DIVISION OF HIGHWAYS

SUBMITTED *Jan 23rd 2012*
[Signature]
DEPUTY DIRECTOR OF HIGHWAYS, REGION ENGINEER

March 23 2012
John D. Baranzelli, P.E.
ENGINEER OF DESIGN AND ENVIRONMENT

March 23 2012
William R. Frey, Jr.
DIRECTOR OF HIGHWAYS, CHIEF ENGINEER

**PRINTED BY THE AUTHORITY
OF THE STATE OF ILLINOIS**