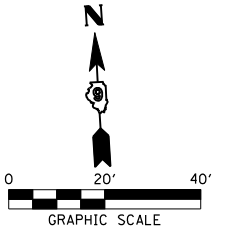


PROP. CURVE 3
 PI STA. = 241+01.54
 $\Delta = 2^\circ 55' 00''$ (RT)
 $D = 0^\circ 52' 00''$
 $R = 6,611.12'$
 $T = 168.30'$
 $L = 336.53'$
 $E = 2.14'$
 $e = NC$
 $T.R. = 0$
 $S.E. RUN = 0$
 $P.C. STA = 239+33.24$
 $P.T. STA = 242+69.77$

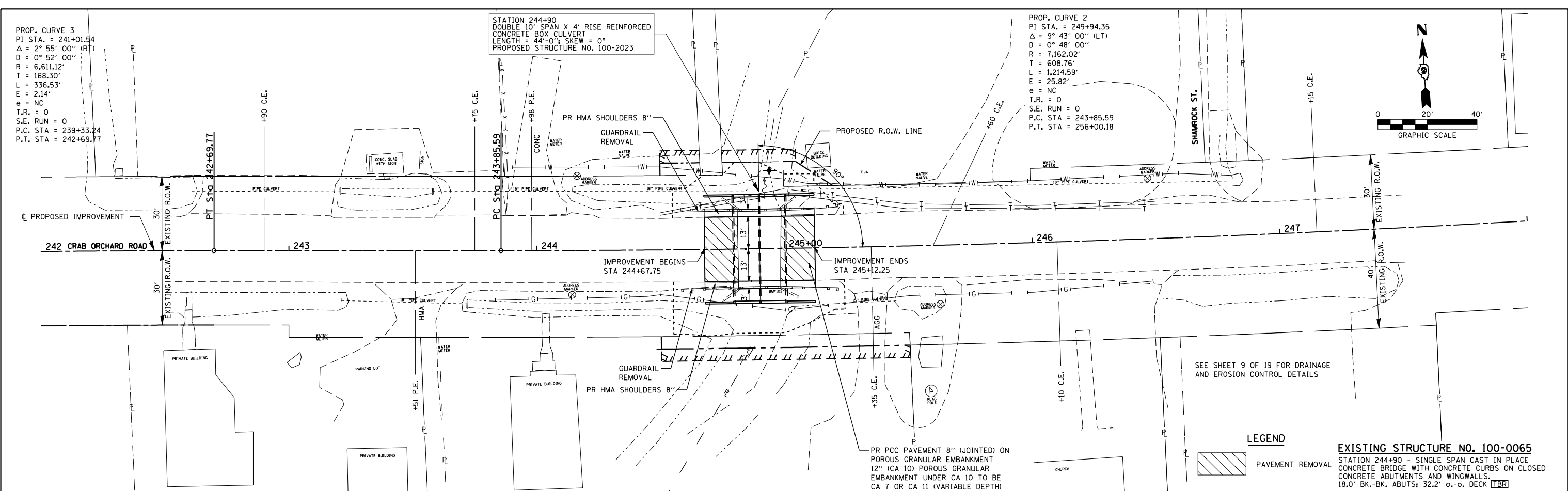
STATION 244+90
 DOUBLE 10' SPAN X 4' RISE REINFORCED
 CONCRETE BOX CULVERT
 LENGTH = 44'-0"; SKEW = 0°
 PROPOSED STRUCTURE NO. 100-2023

PROP. CURVE 2
 PI STA. = 249+94.35
 $\Delta = 9^\circ 43' 00''$ (LT)
 $D = 0^\circ 48' 00''$
 $R = 7,162.02'$
 $T = 608.76'$
 $L = 1,214.59'$
 $E = 25.82'$
 $e = NC$
 $T.R. = 0$
 $S.E. RUN = 0$
 $P.C. STA = 243+85.59$
 $P.T. STA = 256+00.18$

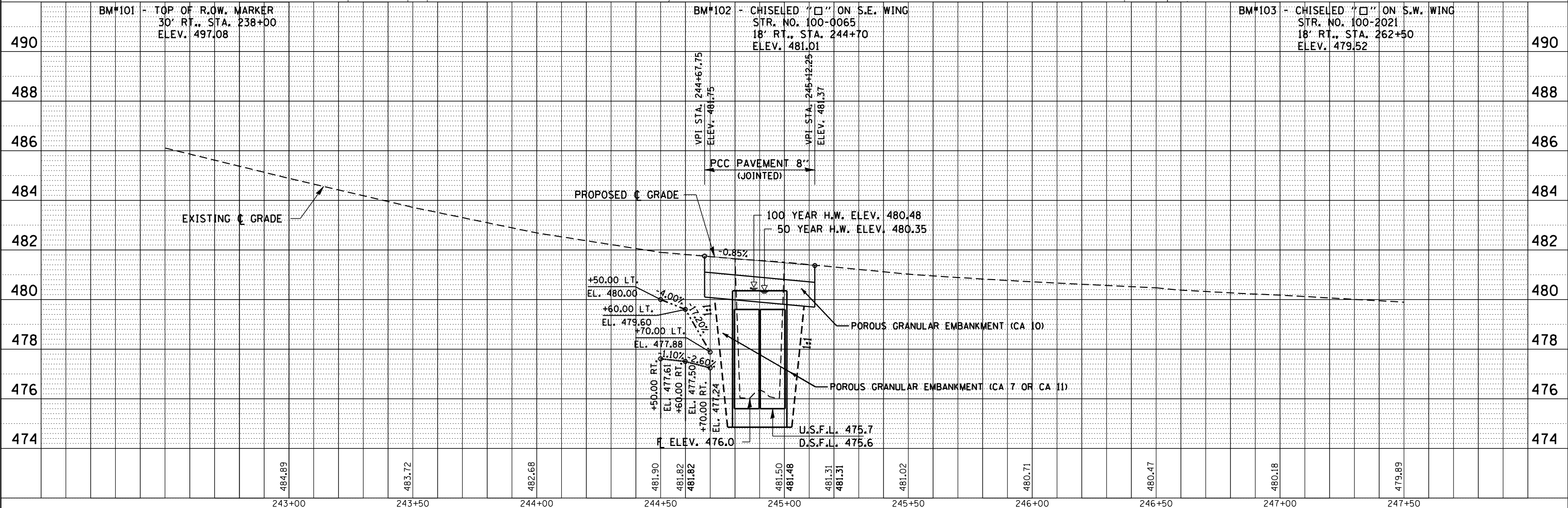


PLAN	SURVEYED	DATE
	PLOTTED	
	CHECKED	
	AT	
	BY	
	NO.	

PROFILE	SURVEYED	DATE
	PLOTTED	
	CHECKED	
	AT	
	BY	
	NO.	



LEGEND
 PAVEMENT REMOVAL
EXISTING STRUCTURE NO. 100-0065
 STATION 244+90 - SINGLE SPAN CAST IN PLACE
 CONCRETE BRIDGE WITH CONCRETE CURBS ON CLOSED
 CONCRETE ABUTMENTS AND WINGWALLS.
 18.0' BK.-BK. ABUTS; 32.2' o.-o. DECK [TBR]



FILE NAME =	USER NAME = CFC...	DESIGNED -	REVISED -	STATE OF ILLINOIS DEPARTMENT OF TRANSPORTATION	PLAN AND PROFILE CRAB ORCHARD ROAD / OLD IL 13			S.B.I.	SECTION	COUNTY	TOTAL SHEETS	SHEET NO.
...d978090-shr-007-plnprf.dgn		DRAWN -	REVISED -					13B	6B-1	WILLIAMSON	19	7
PLOT SCALE = 40.0000' / IN.		CHECKED -	REVISED -					CONTRACT NO. 78090				
PLOT DATE = 12/23/2011		DATE - / /	REVISED -					ILLINOIS FED. AID PROJECT				