

STATE OF ILLINOIS  
DEPARTMENT OF TRANSPORTATION  
DIVISION OF HIGHWAYS

**PROPOSED  
HIGHWAY PLANS**

FAP ROUTE 885 (IL 146)  
SECTION 6B-2  
PROJECT: ACBRF-0885(046)  
STRUCTURE REPLACEMENT OVER  
BIG GRAND PIERRE CREEK  
SN 076-0002 (E)  
SN 076-0031 (P)  
POPE COUNTY  
C-99-023-10

F.A.P. RTE.	SECTION	COUNTY	TOTAL SHEETS	SHEET NO.
885	6B-2	POPE	51	1

\* 51 + 3 = 54

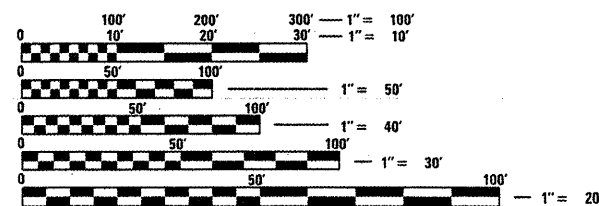
**INDEX OF SHEETS**

- 1 COVER SHEET
- 2 GENERAL NOTES, COMMITMENTS, STANDARDS AND SIGNATURES
- 3-8 SUMMARY OF QUANTITIES
- 9 TYPICAL ROADWAY SECTION
- 10-11 SCHEDULES
- 12 PLAN AND PROFILE
- 13 STAGING
- 14 GUARDRAIL AND SHOULDER LAYOUT
- 15 EROSION CONTROL
- 16 WIDE LOAD DETOUR
- 17 MISCELLANEOUS DETAILS
- 18-40B STRUCTURE PLANS
- 41-51 CROSS SECTIONS  
STANDARDS

**TRAFFIC DATA**

2009 ADT = 1530  
9.15 % TRUCKS  
POSTED SPEED = 55 MPH

**MONROE TOWNSHIP/POPE COUNTY ROAD DISTRICT #02**

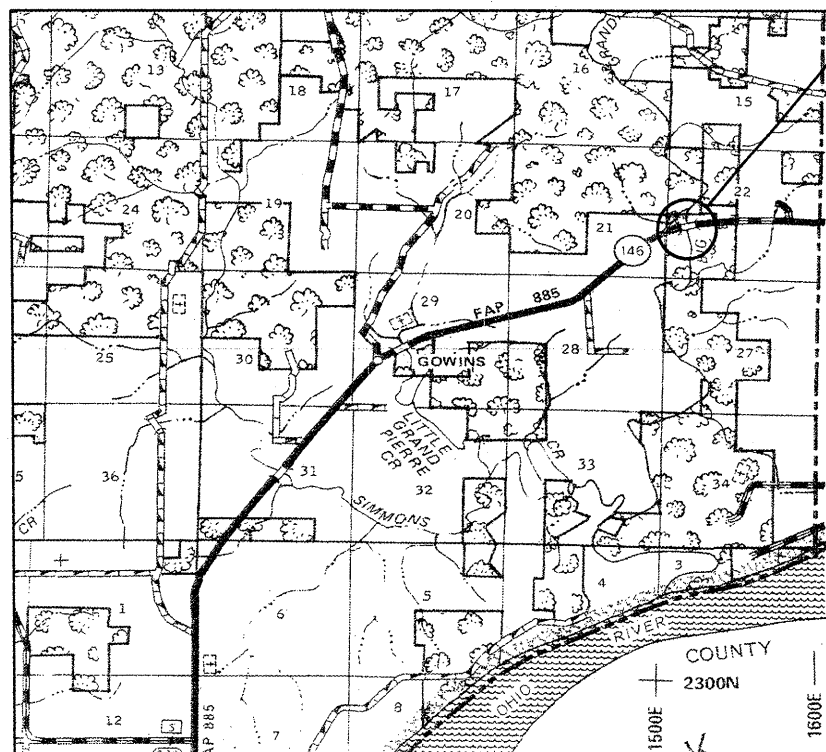


FULL SIZE PLANS HAVE BEEN PREPARED USING STANDARD ENGINEERING SCALES. REDUCED SIZED PLANS WILL NOT CONFORM TO STANDARD SCALES. IN MAKING MEASUREMENTS ON REDUCED PLANS, THE ABOVE SCALES MAY BE USED.

J.U.L.I.E.  
JOINT UTILITY LOCATION INFORMATION FOR EXCAVATION  
1-800-892-0123  
OR 811

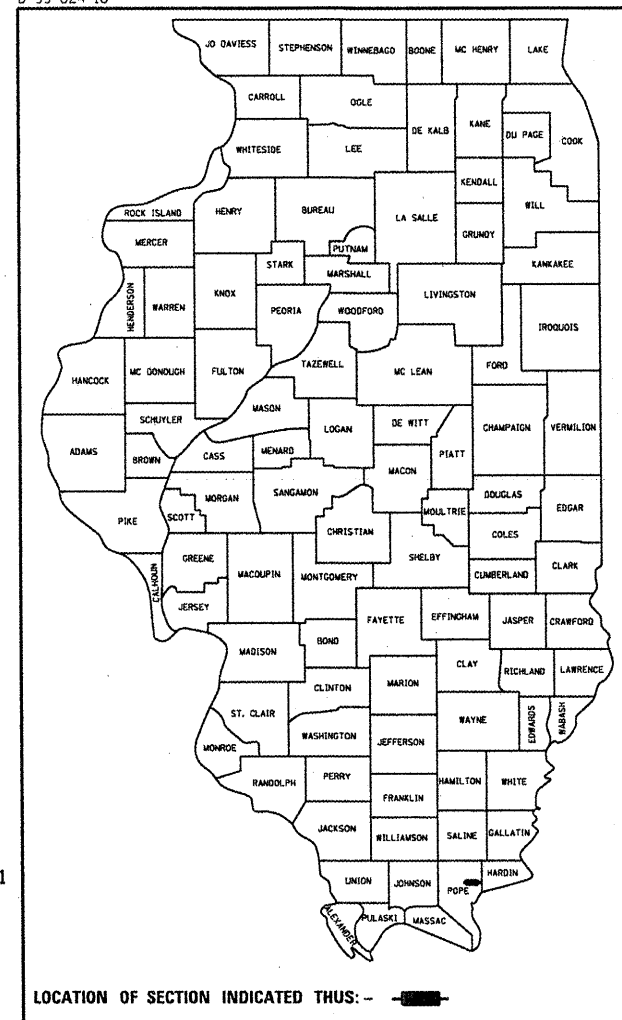
PROJECT MANAGER: DAVID PICHE (618) 351-5227  
PROJECT ENGINEER: BILL PORTER (618) 351-5224

CONTRACT NO. 78168



GROSS LENGTH = 488 FT. = 0.1 MILE  
NET LENGTH = 488 FT. = 0.1 MILE

D-99-024-10



PROPOSED PROJECT LOCATION  
E PROPOSED STR STA 1259+03.51  
SN 076-0002 (E)  
SN 076-0031 (P)  
IL 146  
OVER BIG GRAND PIERRE CREEK

LOCATION OF SECTION INDICATED THUS: —■—

STATE OF ILLINOIS  
DEPARTMENT OF TRANSPORTATION  
DIVISION OF HIGHWAYS

SUBMITTED Feb 1 20 12  
Chris Osment  
DEPUTY DIRECTOR OF HIGHWAYS, REGION ENGINEER

March 23 20 12  
John D. Baranzelli, P.E.  
acting ENGINEER OF DESIGN AND ENVIRONMENT

March 23 20 12  
William R. Freyer  
acting DIRECTOR OF HIGHWAYS, CHIEF ENGINEER

**PRINTED BY THE AUTHORITY  
OF THE STATE OF ILLINOIS**

FILE NAME : c:\pwworkspace\pwworkspace\82284921\78168-ah1-cover.dgn