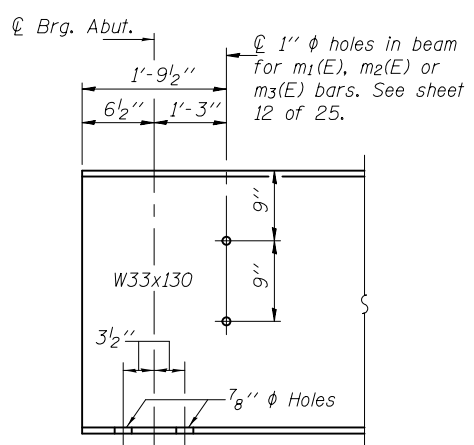


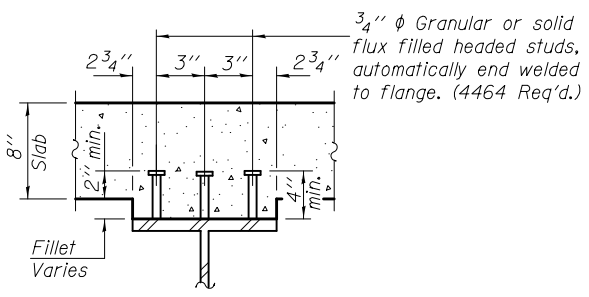
PLAN

All beams are W33x130, AASHTO M270 Grade 50W (NTR).

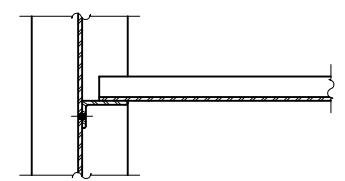
**Use 1 3/16" x 1 7/8" vertical slotted hole in angle L 6 x 4 x 1/2 at south side of Beam 4 only except at pier. Provide 5/16" plate washers for slotted holes. The bolts for slotted holes in angle at Beam 4 shall only be finger tightened prior to deck pour for Stage II Construction. The bolts shall be fully tightened after completion of the deck pour for Stage II Construction. Slots shall be positioned such that bolts will start at top end under no concrete load and finish near bottom end under deck load.



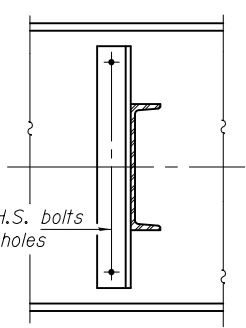
TYP. END OF BEAM ELEVATION



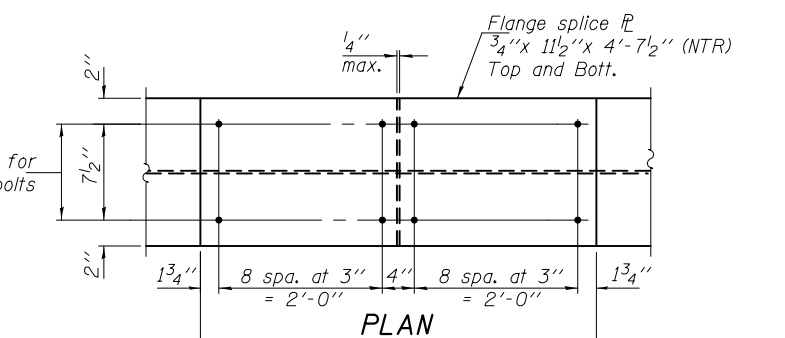
SECTION A-A



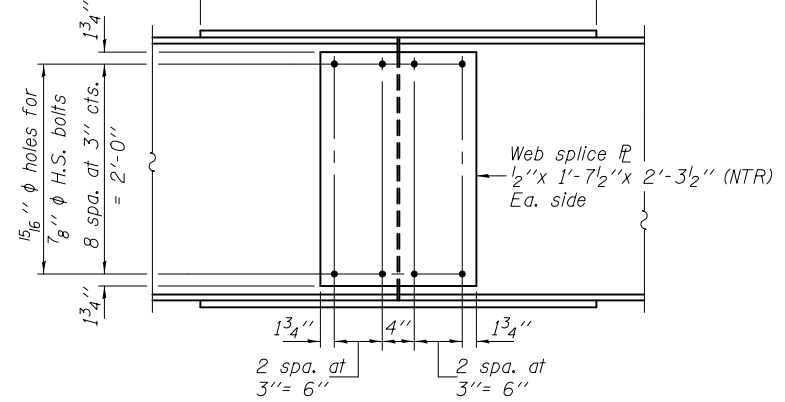
SECTION B-B



DIAPHRAGM D
(60 Required)



PLAN



ELEVATION
SPLICE DETAIL
(12 Required)

Notes: Load carrying components designated "NTR" shall conform to the Impact Testing Requirements, Zone 2.
All diaphragms shall be installed as steel is erected and secured with erection pins and bolts except as otherwise noted. Individual diaphragms at supports may be temporarily disconnected to install bearing anchor rods.
Two hardened washers required for each set of oversized holes.
All structural steel shall be AASHTO M 270 Grade 50W.

*Alternate channel C12x30 is permitted to facilitate material acquisition. Calculated weight of structural steel is based on the lighter section. The alternate, if utilized, shall be provided at no additional cost to the Department.

DESIGNED - Nicholas R. Barnett	EXAMINED - <i>Thomas J. Domagalicki</i> ENGINEER OF BRIDGE DESIGN	DATE - MARCH 20, 2012	STATE OF ILLINOIS DEPARTMENT OF TRANSPORTATION	STRUCTURAL STEEL STRUCTURE NO. 076-0031	F.A.P. RTE. 885	SECTION 6B-2	COUNTY POPE	TOTAL SHEETS 51	SHEET NO. 32	
CHECKED - Michael D. Rolape	PASSED - <i>Carl P. Long</i> ENGINEER OF BRIDGES AND STRUCTURES	REVISED			CONTRACT NO. 78168					
DRAWN - h.t. duong		REVISED			ILLINOIS FED. AID PROJECT					
CHECKED - NRB/MDR					SHEET NO. 15 OF 25 SHEETS					