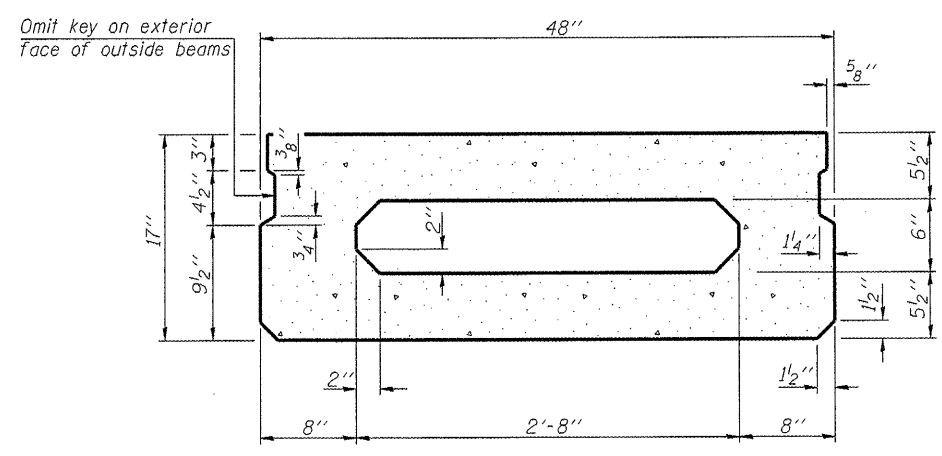
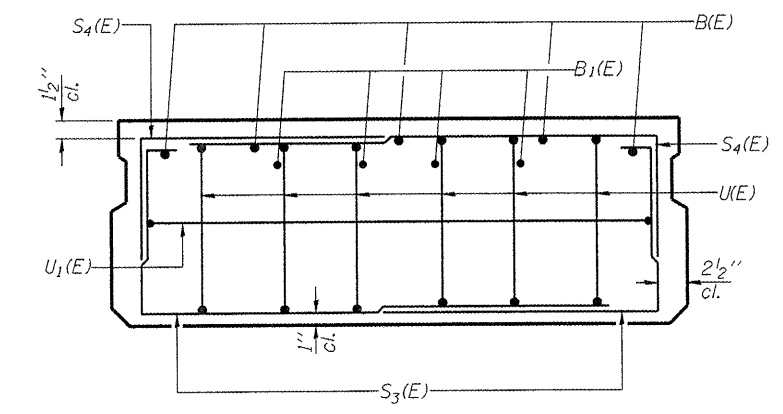


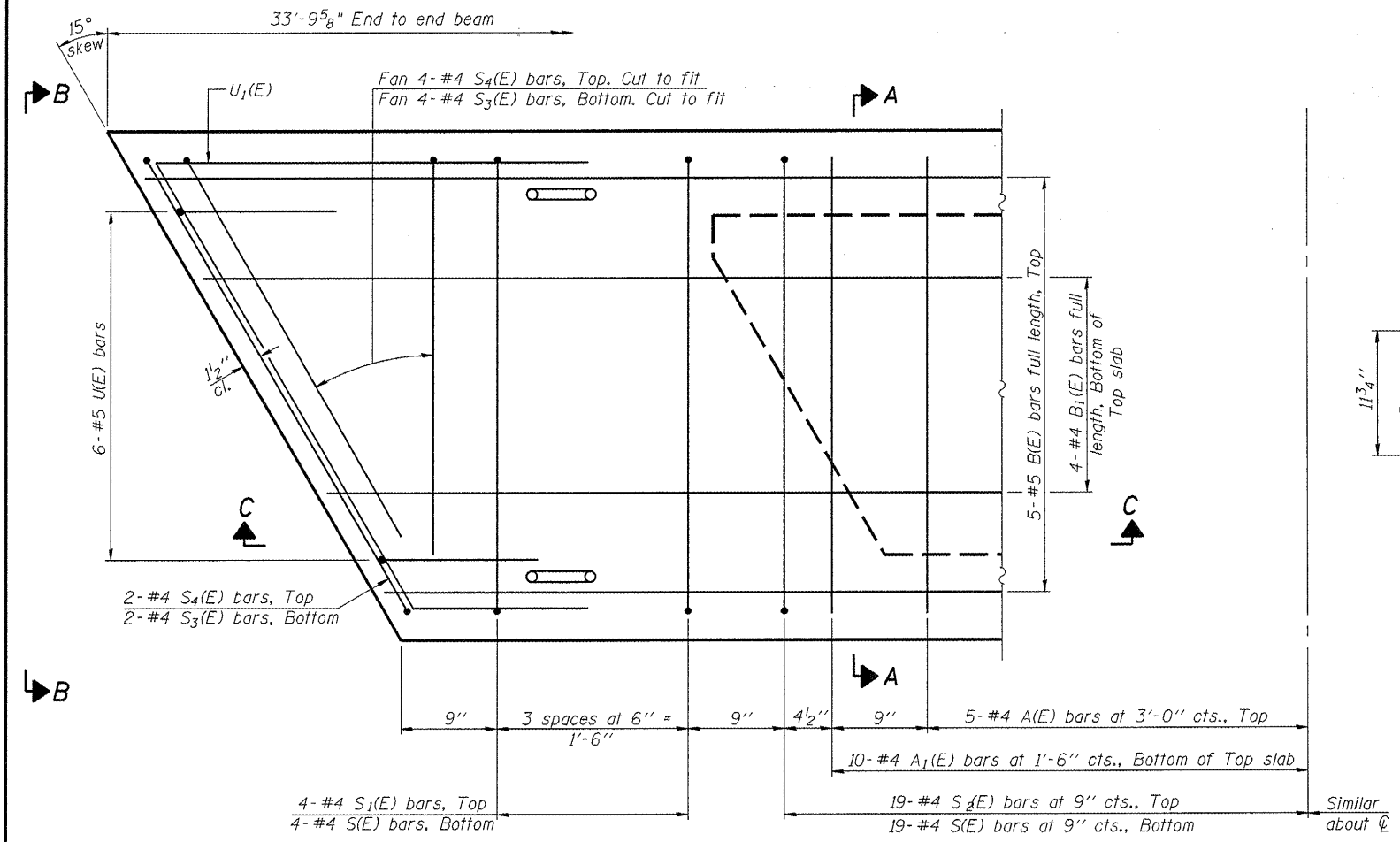
SECTION C-C



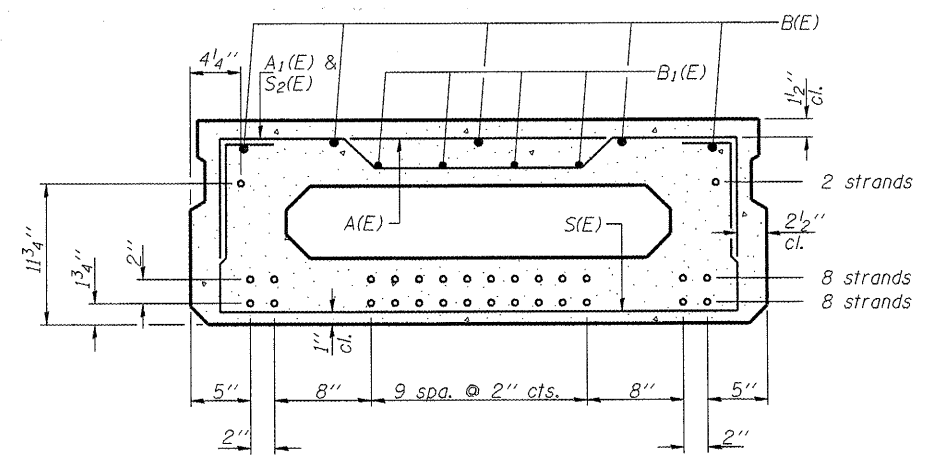
SECTION A-A  
(Showing dimensions)



VIEW B-B



PLAN VIEW



SECTION A-A

(Showing reinforcement and permissible strand locations)  
 Note: Place the number of strands specified in each row symmetrically about the centerline of beam in the permissible strand locations shown.

**BAR LIST**  
**ONE BEAM ONLY**  
 (For information only)

Bar	No.	Size	Length	Shape
A(E)	10	#4	3'-7"	—
A1(E)	20	#4	3'-10"	—
B(E)	5	#5	33'-5"	—
B1(E)	4	#4	33'-5"	—
S(E)	46	#4	6'-9"	U
S1(E)	8	#4	5'-3"	U
S2(E)	38	#4	5'-6"	U
S3(E)	12	#4	4'-5"	U
S4(E)	12	#4	3'-8"	U
U(E)	12	#5	3'-8"	U
U1(E)	2	#4	7'-1"	U

Notes: See sheet S2 of 14 for additional details and Bill of Material.

Place #4 D(e) bars at 9" cts. in fascia beam and first interior beam. D(e) bar included in cost of beam.

Note: Spacing of S(E) and S2(E) bars may be adjusted up to 4" in the immediate area of the transverse tie diaphragms to miss the block outs for the transverse ties.

**17" X 48" PPC DECK BEAM**  
**STRUCTURE NO. 101-6421**

**MINIMUM BAR LAP**  
 #4 bar = 2'-0"  
 #5 bar = 2'-6"

SHEET NO. S5	F.A. RTE.	SECTION	COUNTY	TOTAL SHEETS	SHEET NO.
	-	08-00069-00-BR	WINNEBAGO	21	11
14 SHEETS	CONTRACT NO. 85547				
FED. ROAD DIST. NO.		ILLINOIS FED. AID PROJECT			