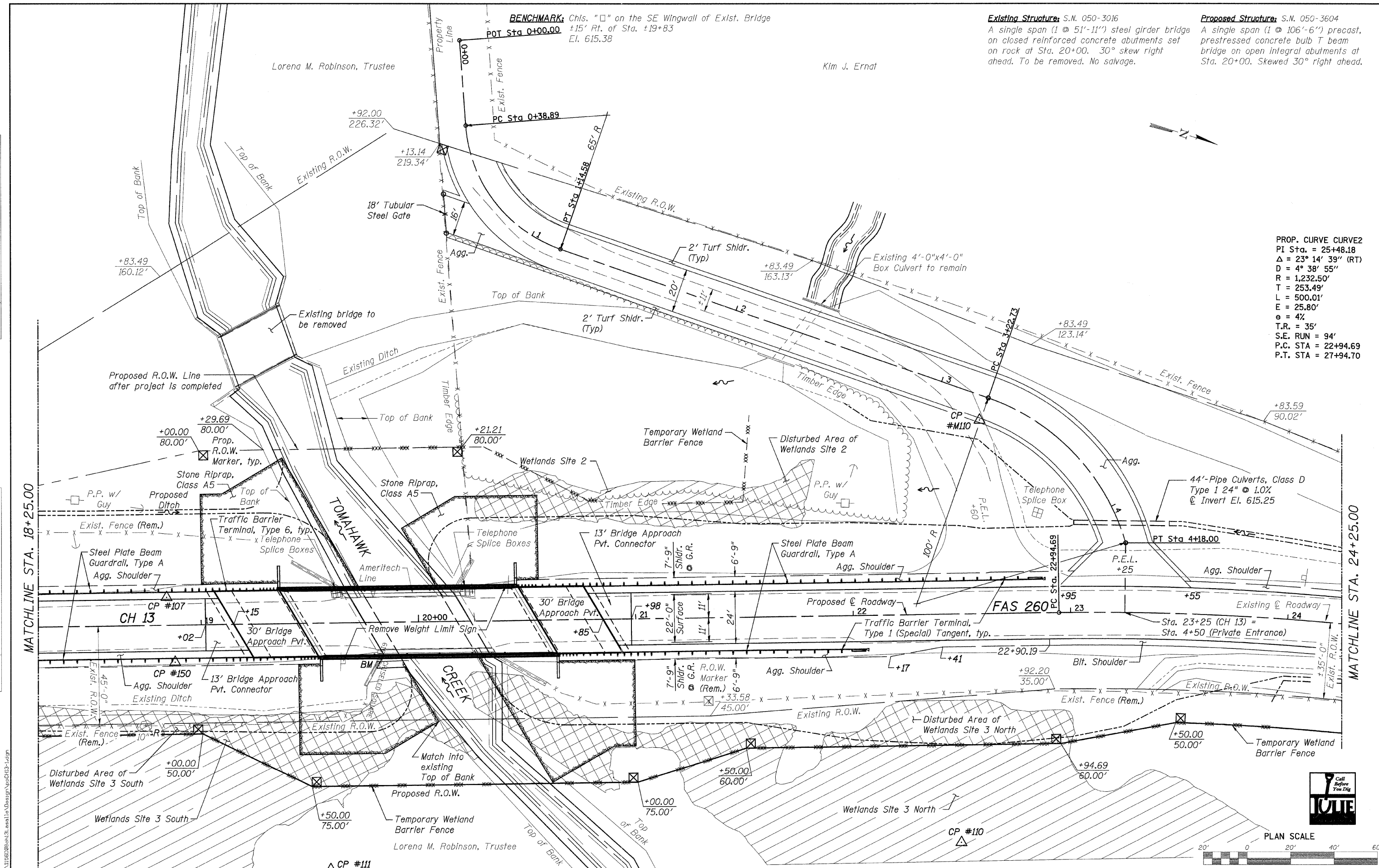


DATE	
BY	
PLAN	SURVEYED
	PLOTTED
	NOTED
	CHECKED
	REVISIONS
	NO. DATE

DATE	
BY	
PROFILE	SURVEYED
	GRADES CHECKED
	STRUCTURE NOTATIONS CHECKED
	NO. DATE



BENCHMARK: Chls. "□" on the SE Wingwall of Exist. Bridge
 ±15' Rt. of Sta. ±19+83
 El. 615.38

Existing Structure: S.N. 050-3016
 A single span (1 @ 51'-11") steel girder bridge on closed reinforced concrete abutments set on rock at Sta. 20+00. 30° skew right ahead. To be removed. No salvage.

Proposed Structure: S.N. 050-3604
 A single span (1 @ 106'-6") precast, prestressed concrete bulb T beam bridge on open integral abutments at Sta. 20+00. Skewed 30° right ahead.

PROP. CURVE CURVE2
 PI Sta. = 25+48.18
 Δ = 23° 14' 39" (RT)
 D = 4° 38' 55"
 R = 1,232.50'
 T = 253.49'
 L = 500.01'
 E = 25.80'
 e = 4%
 T.R. = 35'
 S.E. RUN = 94'
 P.C. STA = 22+94.69
 P.T. STA = 27+94.70

FILE = S:\Projects\11565068\11565068.dwg



DESIGNED	- B.S.K.	REVISED	-
CHECKED	- M.A.C.	REVISED	-
DRAWN	- R.D.A.	REVISED	-
CHECKED	- B.S.K.	REVISED	-

LASALLE COUNTY
C.H. 13 OVER TOMAHAWK CREEK
STATION 20+00

PLAN & PROFILE
STRUCTURE NO. 050-3604

SHEET NO. 3 OF 5 SHEETS STA. 18+25.00 TO STA. 24+25.00

F.A.S. RTE.	SECTION	COUNTY	TOTAL SHEETS	SHEET NO.
260	10-00651-00-BR	LASALLE	51	13
WHA* 1156D08		CONTRACT NO. 87466		
ILLINOIS FED. AID PROJECT BRS-0260105				

