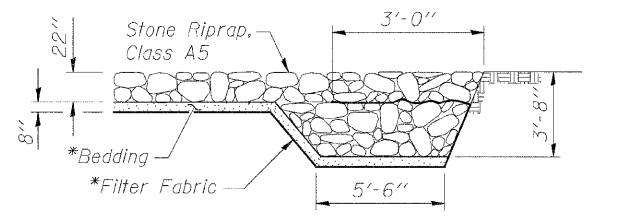


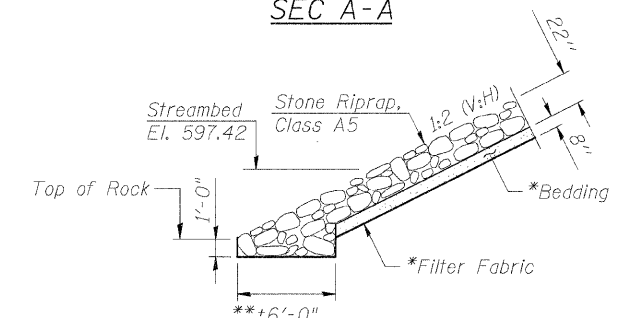
SECTION THRU INTEGRAL ABUTMENT
(Horiz. dim. @ Rt. L's)

*Included in the cost of Pipe Underdrains for Structures.

NOTE:
All drainage system components shall extend to 2'-0" from the end of each wingwall except an outlet pipe shall extend until intersecting with the side slopes. The pipes shall drain into concrete headwalls. (See Article 601.05 of the Standard Specifications and Highway Standard 601101).



SEC A-A



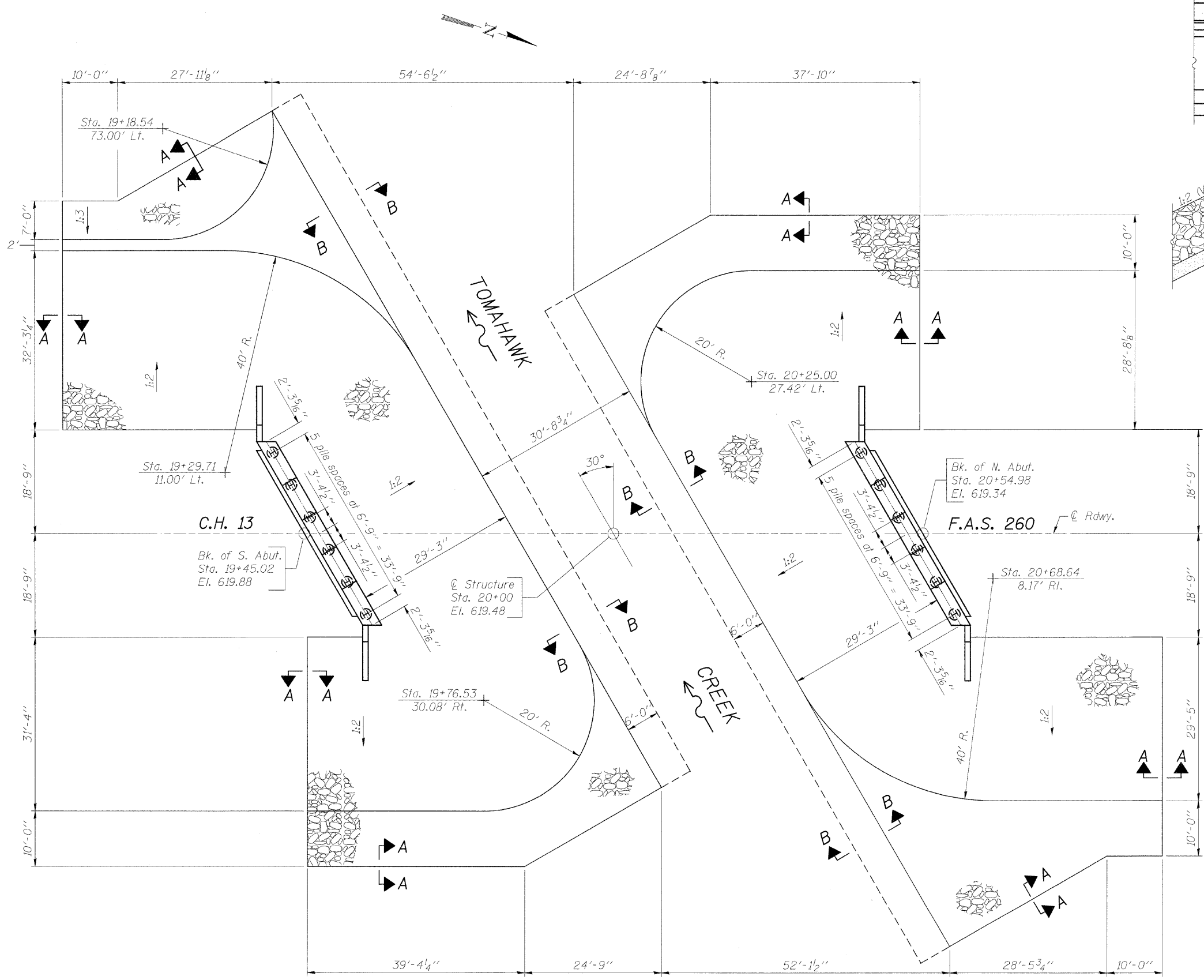
SECTION B-B

STONE RIPRAP ANCHOR DETAILS
**Will vary in field due to top of rock elevation.

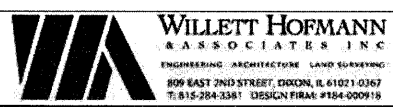
BILL OF MATERIAL

Item	Unit	Quantity
Stone Riprap, Class A5 (Special)	Ton	1,652

*Included in the cost of Stone Riprap, Class A5 (Special).



PLAN VIEW



DESIGNED -	B.K.C.	REVISED -	
CHECKED -	M.A.C.	REVISED -	
DRAWN -	F.D.L.	REVISED -	
CHECKED -	B.K.C.	REVISED -	

LASALLE COUNTY
C.H. 13 OVER TOMAHAWK CREEK
STATION 20+00

RIPRAP & PILE LAYOUT
STRUCTURE NO. 050-3604

STRUCTURAL SHEET NO. 2 OF 18 SHEETS

F.A.S. RTE.	SECTION	COUNTY	TOTAL SHEETS	SHEET NO.
260	10-00651-00-BR	LASALLE	51	19
WHA* 1156D08		CONTRACT NO. 87466		
FED. ROAD DIST. NO. - ILLINOIS FED. AID PROJECT BRS-02601051				

FILE: J:\1156D08\13_00\13_00\Struct\1156D08RiprapDetail.dwg