

LEFT EDGE OF APPROACH PAVEMENT

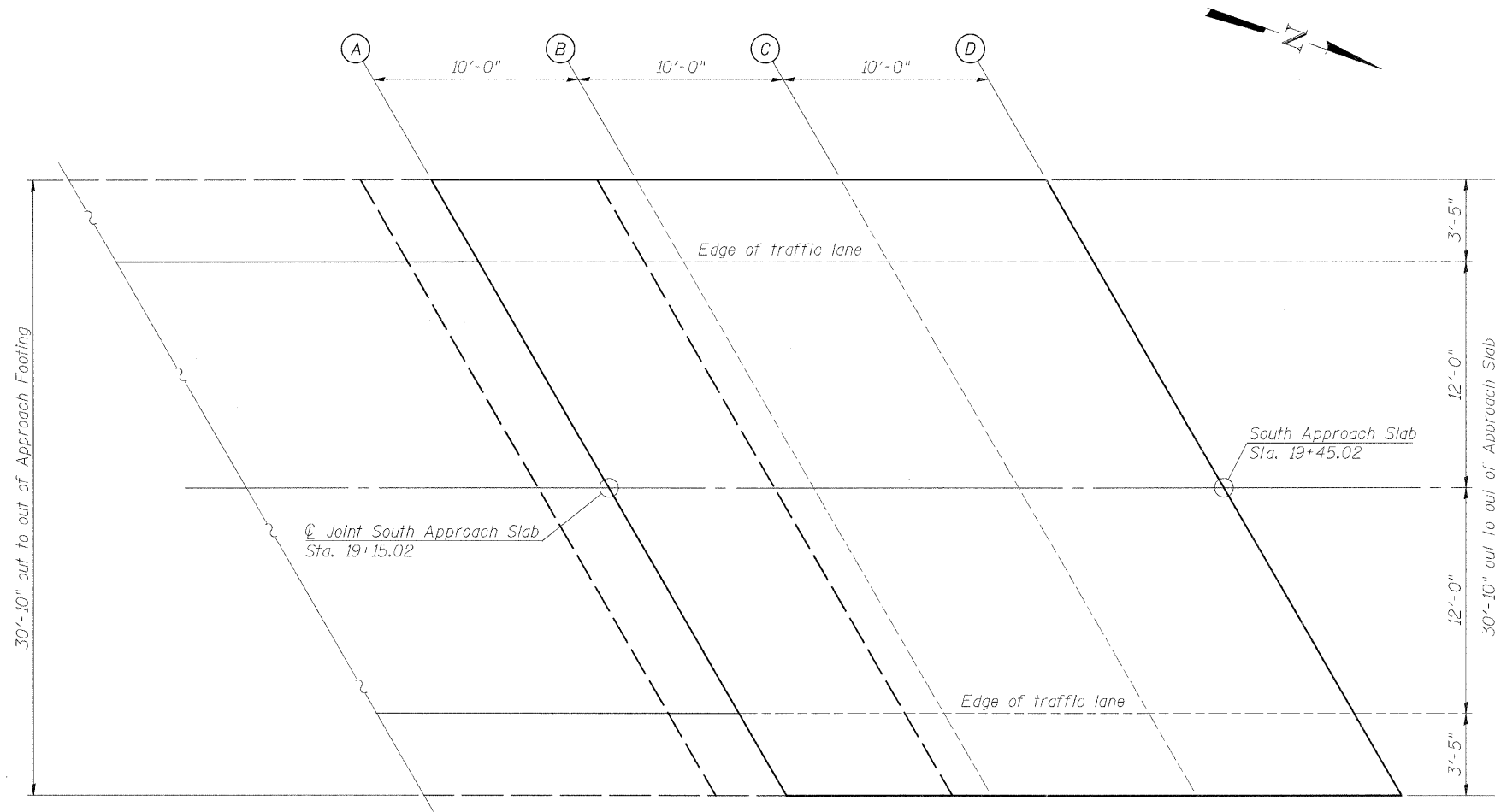
Location	Station	Offset Lt.	Theoretical Grade Elevations
A	19+06.12	15.4167	620.05
B	19+16.12	15.4167	619.93
C	19+26.12	15.4167	619.81
D	19+36.12	15.4167	619.71

LEFT EDGE OF TRAFFIC LANE

Location	Station	Offset Lt.	Theoretical Grade Elevations
A	19+08.09	12.00	620.10
B	19+18.09	12.00	619.98
C	19+28.09	12.00	619.86
D	19+38.09	12.00	619.76

CENTERLINE

Location	Station	Offset	Theoretical Grade Elevations
A	19+15.02	0.00	620.20
B	19+25.02	0.00	620.09
C	19+35.02	0.00	619.98
D	19+45.02	0.00	619.88



PLAN

RIGHT EDGE OF TRAFFIC LANE

Location	Station	Offset Rt.	Theoretical Grade Elevations
A	19+21.95	12.00	619.93
B	19+31.95	12.00	619.82
C	19+41.95	12.00	619.72
D	19+51.95	12.00	619.62

RIGHT EDGE OF APPROACH PAVEMENT

Location	Station	Offset Rt.	Theoretical Grade Elevations
A	19+23.92	15.4167	619.84
B	19+33.92	15.4167	619.73
C	19+43.92	15.4167	619.63
D	19+53.92	15.4167	619.54

FILE = J:\1156\026ch13_road\Design\Structure\1156\026\Top of South Approach Elevations.dgn



DESIGNED - B.K.C.
 CHECKED - M.A.C.
 DRAWN - F.D.L.
 CHECKED - B.K.C.

REVISED -
 REVISED -
 REVISED -
 REVISED -

LASALLE COUNTY
C.H. 13 OVER TOMAHAWK CREEK
STATION 19+00

TOP OF SOUTH BRIDGE APPROACH SLAB ELEVATIONS
STRUCTURE NO. 050-3604

STRUCTURAL SHEET NO. 5 OF 18 SHEETS

F.A.S. RTE.	SECTION	COUNTY	TOTAL SHEETS	SHEET NO.
260	10-00651-00-BR	LASALLE	51	22
WHA# 1156D08		CONTRACT NO. 87466		
FED. ROAD DIST. NO. - ILLINOIS FED. AID PROJECT BRS-0260(105)				