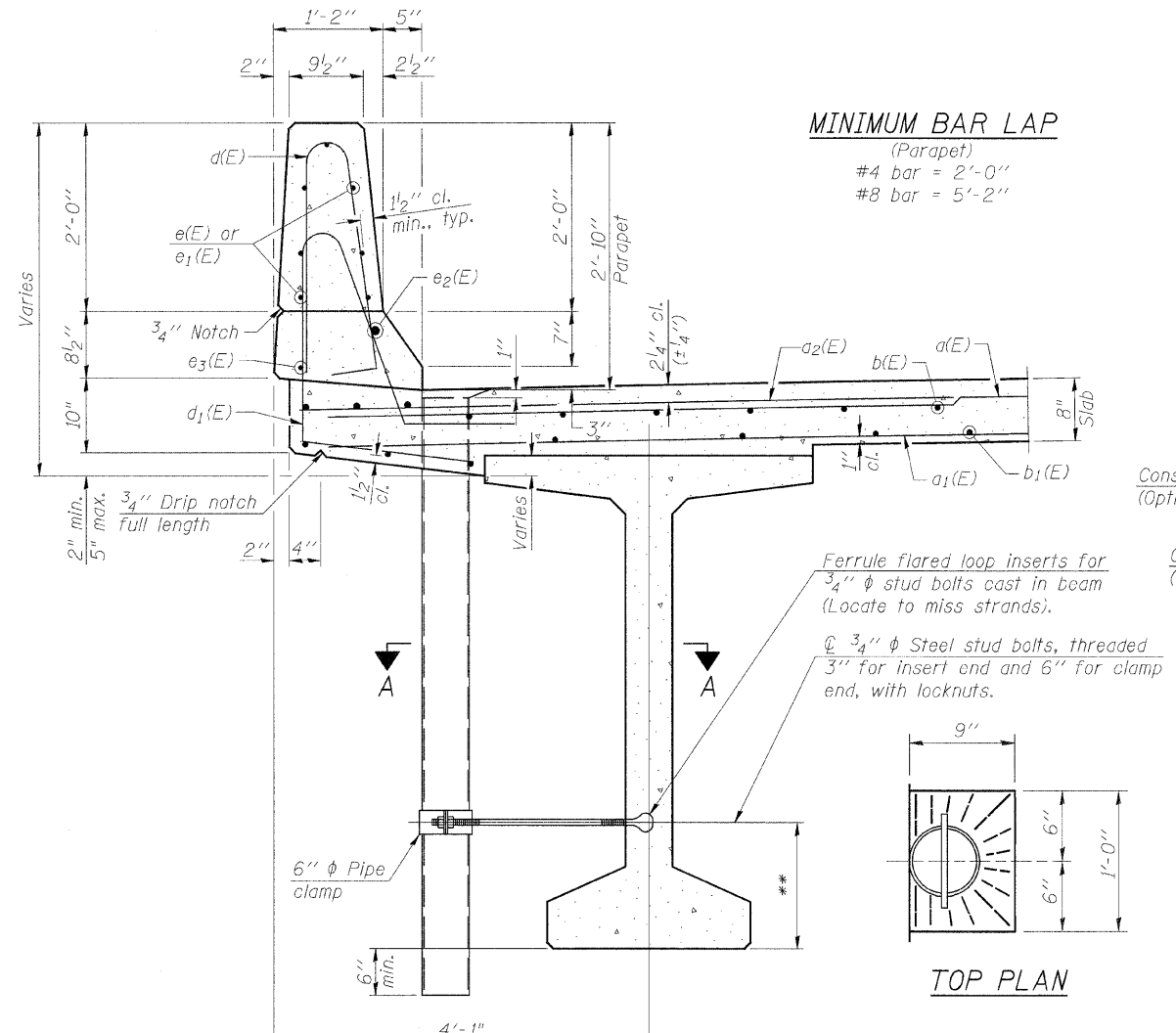
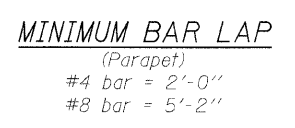


INSIDE ELEVATION OF PARAPET

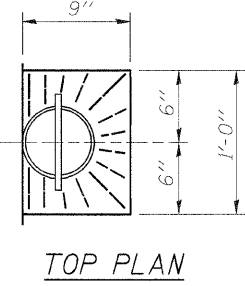


SECTION THRU PARAPET

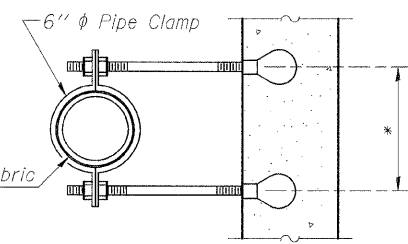
**For insert locations see Structural Sheet 8 of 18.



MINIMUM BAR LAP
(Parapet)
#4 bar = 2'-0"
#8 bar = 5'-2"

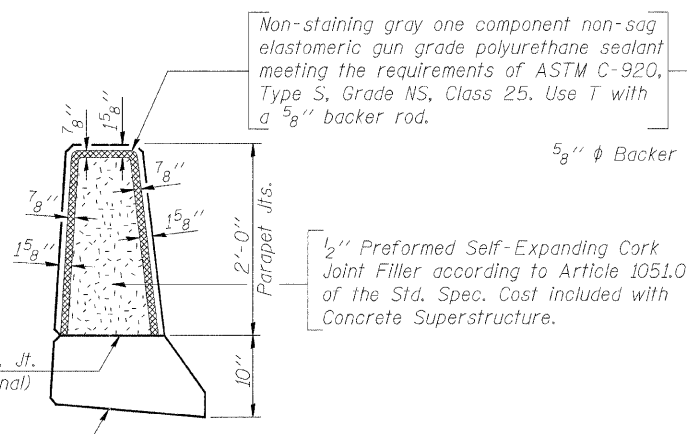


TOP PLAN

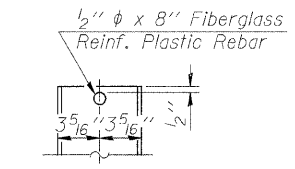


SECTION A-A

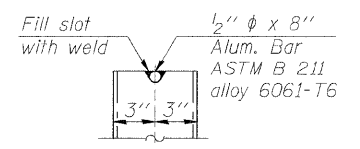
*Dimension as required by Pipe Clamp



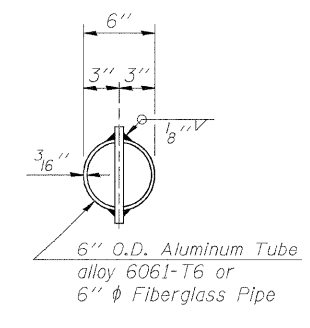
PARAPET JOINT DETAILS



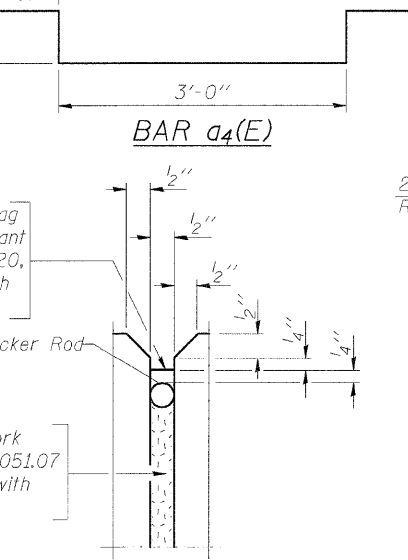
FIBERGLASS PIPE



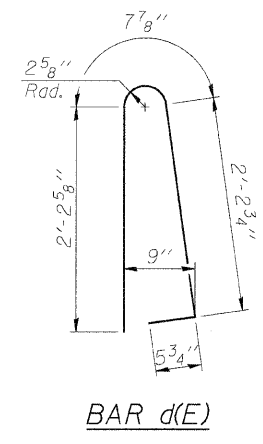
ALUMINUM TUBE



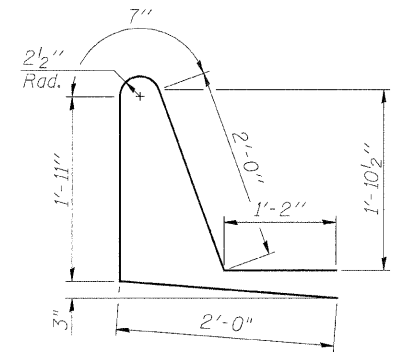
TOP PLAN
(Showing Aluminum Tube)



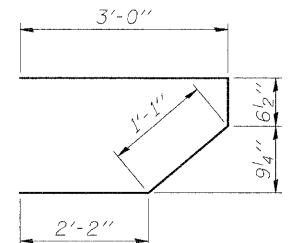
BAR a4(E)



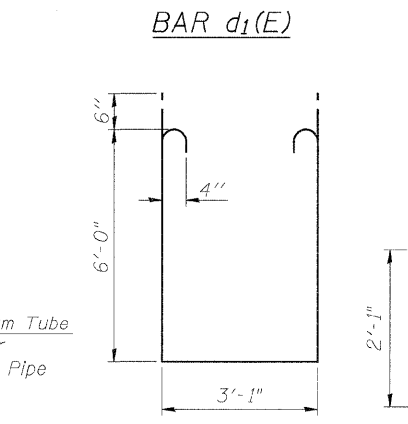
BAR d(E)



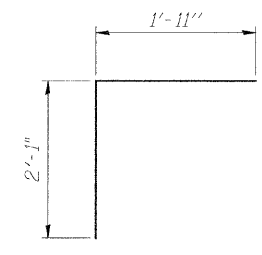
BAR d1(E)



BAR s(E)



BAR s1(E)



BAR v(E)

SUPERSTRUCTURE
BILL OF MATERIAL

Bar	No.	Size	Length	Shape
a(E)	188	#5	32'-6"	—
a1(E)	132	#5	32'-6"	—
a2(E)	188	#6	6'-6"	—
a3(E)	4	#5	37'-7"	—
a4(E)	110	#4	5'-5"	—
b(E)	111	#5	38'-9"	—
b1(E)	104	#5	29'-11"	—
b2(E)	20	#4	10'-0"	—
d(E)	242	#5	5'-7"	—
d1(E)	242	#5	7'-8"	—
e(F)	28	#4	18'-8"	—
e1(F)	56	#4	17'-8"	—
e2(E)	6	#8	40'-0"	—
e3(E)	8	#4	28'-11"	—
m(E)	10	#6	38'-0"	—
m1(E)	18	#6	11'-0"	—
m2(E)	8	#6	4'-4"	—
m3(E)	4	#6	3'-1"	—
m4(E)	4	#6	35'-10"	—
m5(E)	12	#6	10'-1"	—
s(E)	60	#5	6'-10"	—
s1(E)	36	#4	16'-1"	—
v(E)	64	#5	4'-0"	—
Floor Drains	Each		12	
Reinforcement Bars, Epoxy Coated	Lbs.		28,670	
Concrete Superstructure	Cu. Yds.		183.6	
Bridge Deck Grooving	Sq. Yd.		342	
Protective Coat	Sq. Yd.		459	

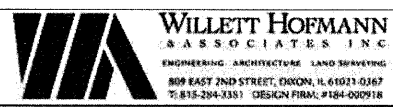
NOTES:

Fiberglass pipe shall conform to ASTM D2996, with short-time rupture strength hoop tensile stress of 30,000 p.s.i. minimum.

The exterior surfaces of the floor drains shall be coated or pigmented by the manufacturer with a color that matches the concrete.

The clamping device and inserts shall be galvanized according to AASHTO M 232. Cost of clamping device and inserts included with Floor Drains.

Bars indicated thus 1 x 3-#8 etc. Indicates 1 line of bars with 3 lengths per line.



DESIGNED - B.K.C.	REVISED -
CHECKED - M.A.C.	REVISED -
DRAWN - F.D.L.	REVISED -
CHECKED - B.K.C.	REVISED -

LASALLE COUNTY
C.H. 13 OVER TOMAHAWK CREEK
STATION 20 + 00

SUPERSTRUCTURE DETAILS
STRUCTURE NO. 050-3604

STRUCTURAL SHEET NO. 9 OF 18 SHEETS

F.A.S. RTE.	SECTION	COUNTY	TOTAL SHEETS	SHEET NO.
260	10-00651-00-BR	LASALLE	51	26
WHA* 1156D08		CONTRACT NO. 87466		
FED. ROAD DIST. NO. - [ILLINOIS] FED. AID PROJECT BRS-02601051				

FILE = J:\1156D08\13\asalle\Design\Struct\1156D08S\superstruc\struc\09\0918.dgn