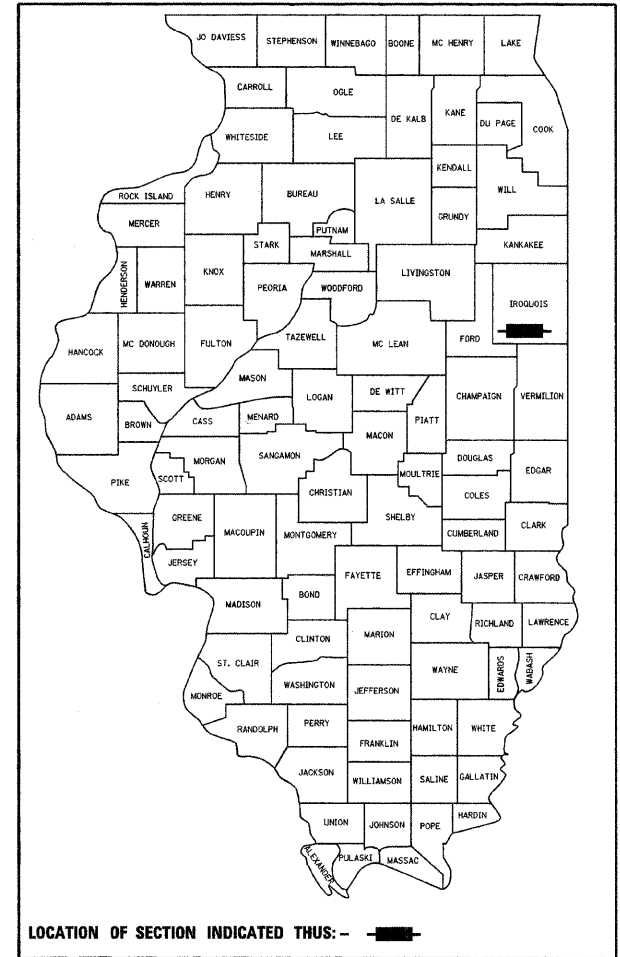


ROUTE NO.	SECTION	COUNTY	TOTAL SHEETS	SHEET NO.
T.R. 351	08-22102-01-BR	IROQUOIS	25	1

ILLINOIS PIGEON GROVE ROAD DISTRICT  
**CONTRACT NO. 87493**

**STATE OF ILLINOIS**  
**DEPARTMENT OF TRANSPORTATION**  
**DIVISION OF HIGHWAYS**  
**PLANS FOR PROPOSED**  
**HIGHWAY BRIDGE PROGRAM**

**SECTION 08-22102-01-BR**  
**IROQUOIS COUNTY**  
**PROJECT NO. BROS-0075(146)**  
**PIGEON GROVE ROAD DISTRICT**  
**C-93-125-11**  
**CONTRACT NO. 87493**  
**T.R. 351**



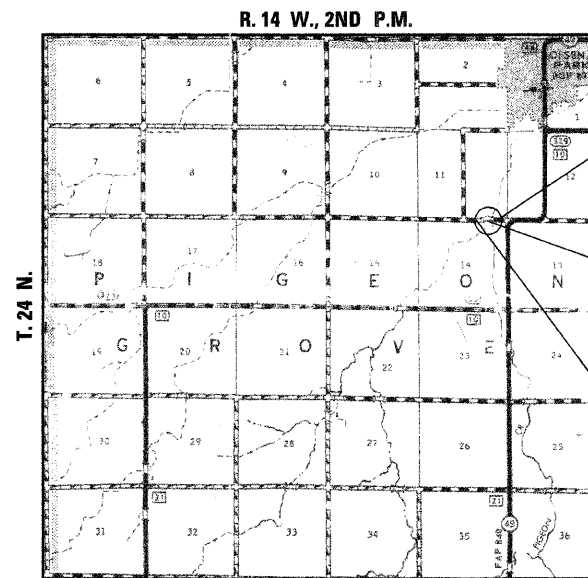
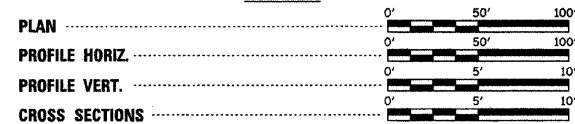
LOCATION OF SECTION INDICATED THIS: - - - - -

**CLASSIFICATION: LOCAL ROAD (NON-URBAN)**  
**DESIGN VOLUME: UNDER 250 ADT**  
**CURRENT ADT: 31 (2011)**  
**DESIGN SPEED: 30 MPH**

SHEET NO.	INDEX OF SHEETS	TITLE
1.	COVER SHEET	
2.	SUMMARY OF QUANTITIES, GENERAL NOTES & TYPICAL SECTIONS	
3.	PLAN AND PROFILE SHEET	
4.-18	BRIDGE PLANS	
19.-24.	STATION CROSS SECTIONS	
25.	EROSION CONTROL PLAN	

STANDARDS	
000001-06	STANDARD SYMBOLS, ABBREVIATIONS AND PATTERNS
280001-06	TEMPORARY EROSION CONTROL SYSTEMS
515001-03	NAME PLATE FOR BRIDGES
601101-01	CONCRETE HEADWALL FOR PIPE DRAINS
635006-03	REFLECTOR AND TERMINAL MARKER PLACEMENT
701901-02	TRAFFIC CONTROL DEVICES
720011-01	METAL POSTS FOR SIGNS, MARKERS AND DELINEATORS
728001-01	TELESCOPING STEEL SIGN SUPPORT
729001-01	APPLICATIONS OF TYPES A AND B METAL POSTS (FOR SIGNS AND MARKERS)
BLR 21-9	TYPICAL APPLICATION OF TRAFFIC CONTROL DEVICES FOR CONSTRUCTION ON RURAL LOCAL HIGHWAYS

**SCALES**



**LOCATION PLAN**

GROSS LENGTH OF SECTION = 800 FEET = 0.152 MILES  
NET LENGTH OF SECTION = 800 FEET = 0.152 MILES

SCALE IN MILES

**IMPROVEMENT ENDS**  
**STA. 13+50.00**

**STA. 9+50.00 - SINGLE SPAN COMPOSITE STEEL PLATE GIRDER BRIDGE WITH INTEGRAL ABUTMENTS; 30'-0" O.-O. DECK, 128'-0" BK.-BK. ABUTS., 15° SKEW (LT.) EXISTING S.N. 038-5129 PROPOSED S.N. 038-5157**

**IMPROVEMENT BEGINS**  
**STA. 5+50.00**



*Gary J. Cartwright* 2-13-12  
REGISTERED PROFESSIONAL ENGINEER OF ILLINOIS  
EXPIRES 11-30-13

TOLL FREE JOINT UTILITY LOCATING INFORMATION FOR EXCAVATORS (J.U.L.I.E.)  
TELEPHONE NUMBER 1-800-892-0123

PASSED	<u>Feb 14</u>	20 <u>12</u>
	<i>Don Bauer</i>	
	ROAD DISTRICT COMMISSIONER	
APPROVED	<u>Feb 14</u>	20 <u>12</u>
	<i>Gary J. Cartwright</i>	
	COUNTY ENGINEER	
PASSED	<u>02-16-2012</u>	20 <u>12</u>
	<i>[Signature]</i>	
	DISTRICT THREE IMPLEMENTATION ENGINEER	
RELEASED FOR BID	<u>02-16-2012</u>	20 <u>12</u>
BASED ON LIMITED		
REVIEW	<i>[Signature]</i>	
	DEPUTY DIRECTOR OF HIGHWAYS, REGION TWO ENGINEER	
	STATE OF ILLINOIS	
	DEPARTMENT OF TRANSPORTATION	

4440 ASH GROVE  
SPRINGFIELD, IL 62711  
(217) 793-8800  
www.fehr-graham.com

**FEHR-GRAHAM & ASSOCIATES, LLC**  
ENGINEERING AND SCIENCE CONSULTANTS  
PEORIA, IL, ROCKFORD, IL, ROCKFORD, IL, MONROE, IL, SPRINGFIELD, IL