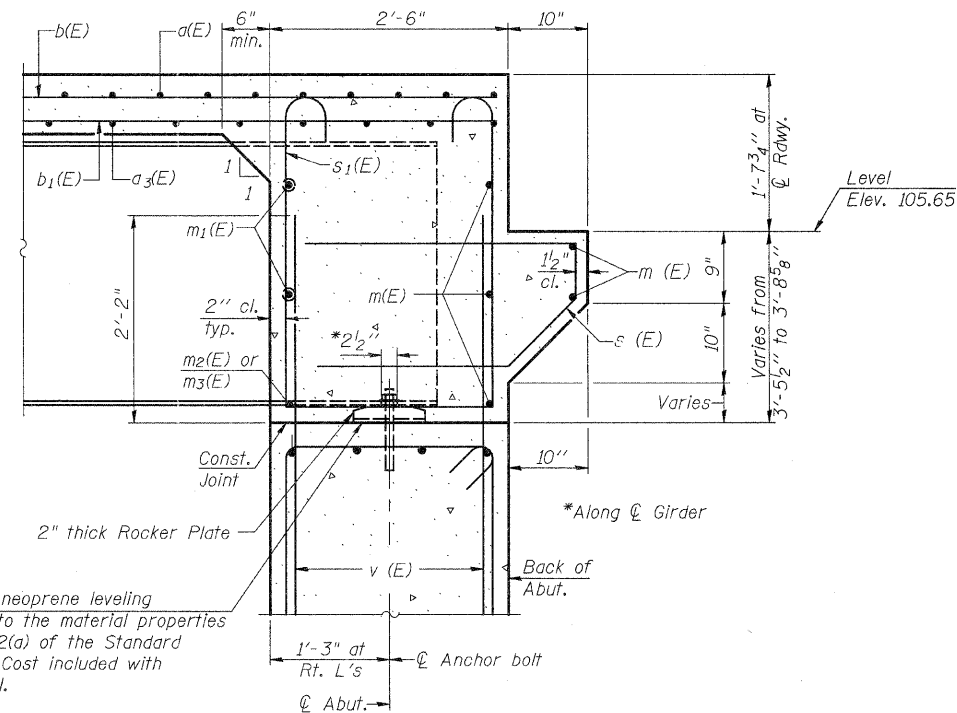


Notes:
 Reinforcement bars in diaphragm are billed with superstructure.
 Concrete in diaphragm is included with Concrete Superstructure
 The s(E) and s1(E) bars shall be placed parallel to the girders. Spacing for these bars shall be at right angles to the girders.

MIN. BAR LAP
 #6 bar = 3'-10"



SUPERSTRUCTURE BILL OF MATERIAL

Bar	No.	Size	Length	Shape
a(E)	235	#5	29'-8"	—
a1(E)	468	#6	6'-6"	—
a2(E)	468	#6	3'-8"	—
a3(E)	153	#5	29'-4"	—
a4(E)	4	#5	30'-9"	—
b(E)	140	#5	34'-5"	—
b1(E)	150	#5	28'-2"	—
m(E)	10	#6	30'-8"	—
m1(E)	20	#6	10'-5"	—
m2(E)	8	#6	6'-3"	—
m3(E)	4	#6	2'-2"	—
s(E)	68	#5	6'-10"	—
s1(E)	60	#4	12'-3"	—
Reinforcement Bars, Epoxy Coated			Pound	30,500
Concrete Superstructure			Cu. Yd.	134.2
Bridge Deck Grooving			Sq. Yd.	398
Protective Coat			Sq. Yd.	473

SI-DS1

7-1-10

FILE NAME = 11-137.SUPER.DGN	USER NAME = S.A.P.	DESIGNED - A.R.K.	REVISED -
		CHECKED - R.E.A.	REVISED -
		DRAWN - S.A.P.	REVISED -
		CHECKED - A.R.K.	REVISED -
PLOT SCALE = XXX			
PLOT DATE = 01/04/12			

FEHR-GRAHAM & ASSOCIATES, LLC
 ENGINEERING AND SCIENCE CONSULTANTS
 FREEPORT, IL ROCKFORD, IL ROCHELLE, IL MONROE, WI SPRINGFIELD, IL

INTEGRAL ABUTMENT DIAPHRAGM DETAILS
 S.N. 038-5157

SHEET NO. 6 OF 15 SHEETS

Work this sheet with sheet 5 of 15.

TWP. RTE. 351	SECTION 08-22102-01-BR	COUNTY IROQUOIS	TOTAL SHEETS 25	SHEET NO. 9
			CONTRACT NO. 87493	
			ILLINOIS PIGEON GROVE ROAD DISTRICT	