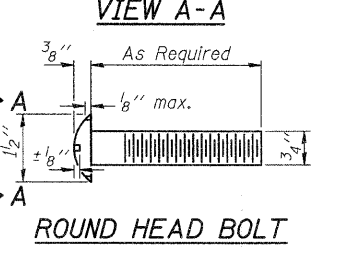
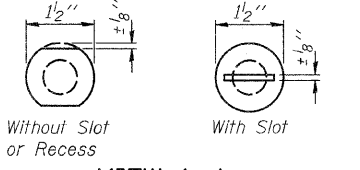
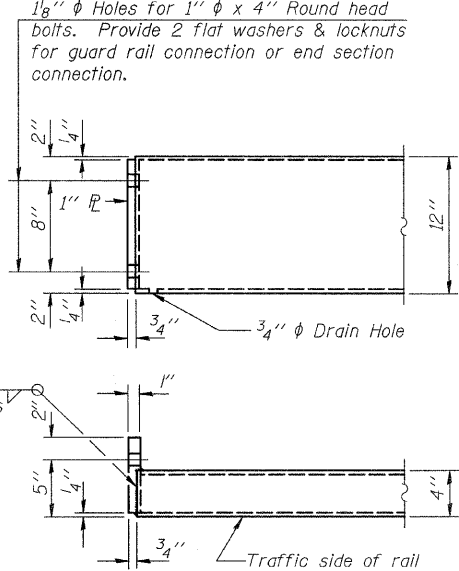
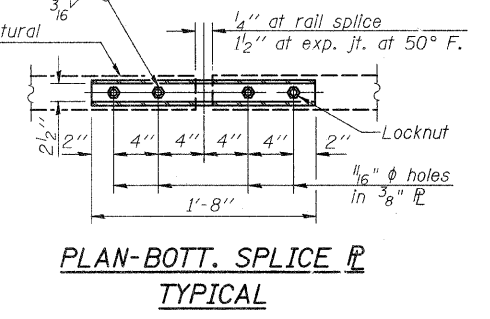
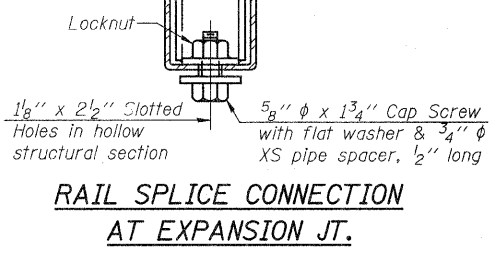
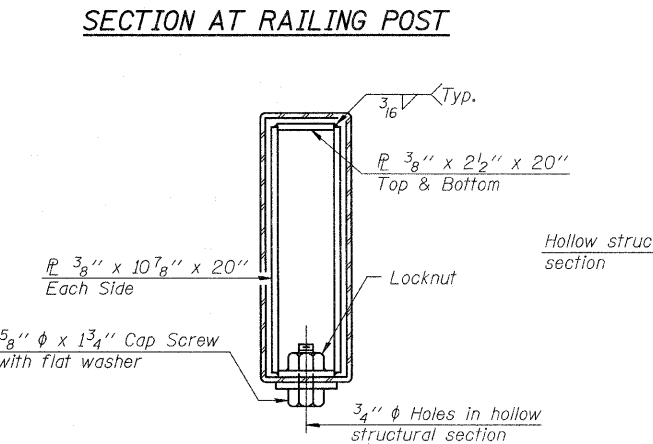
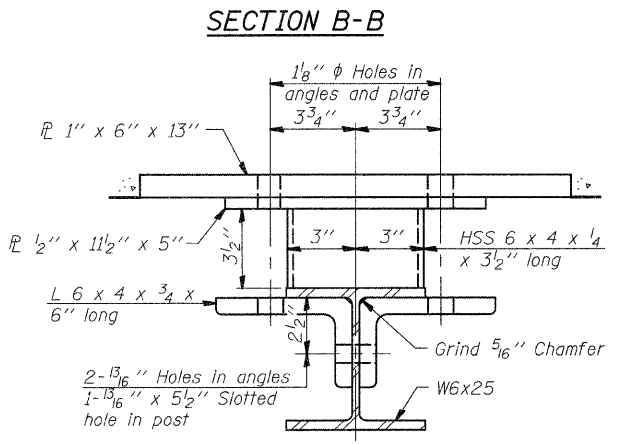
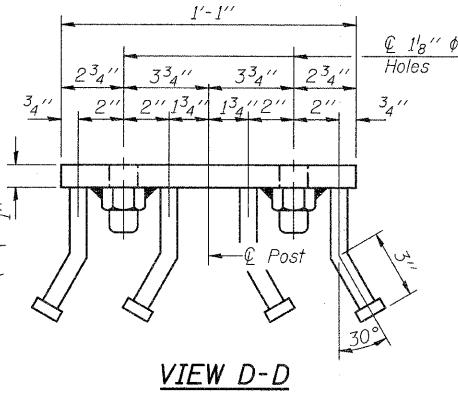
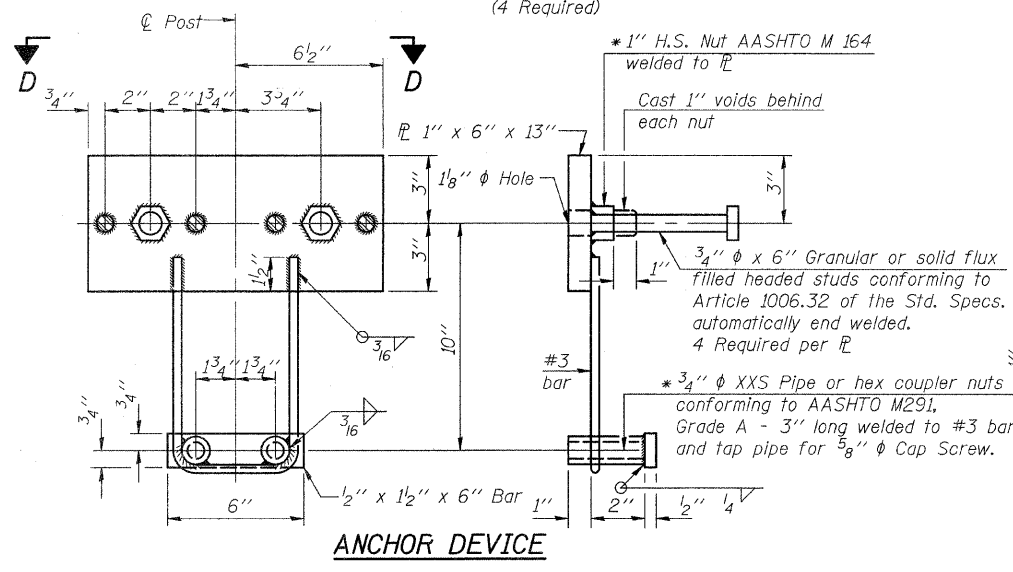
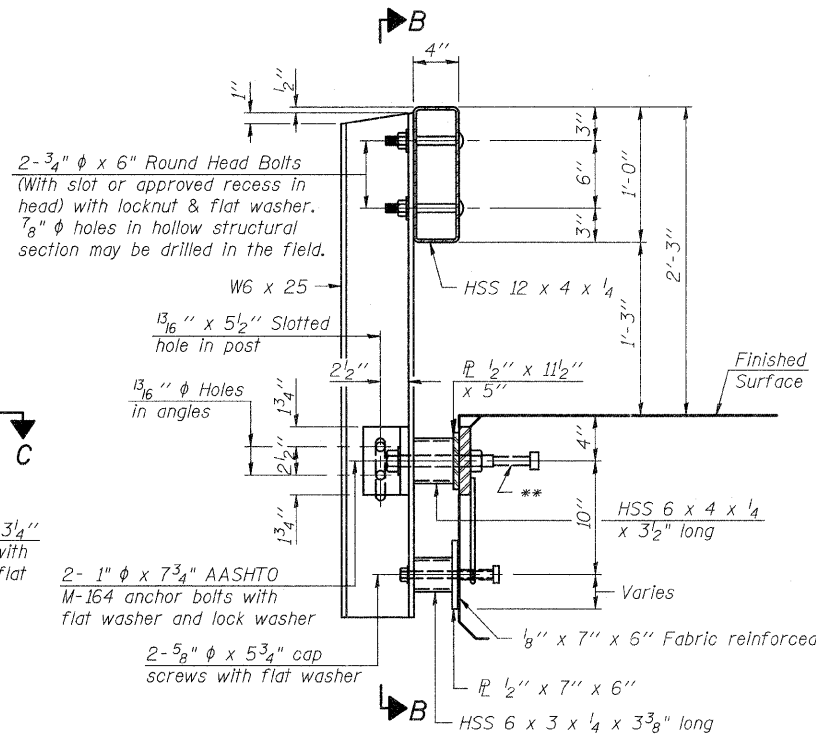
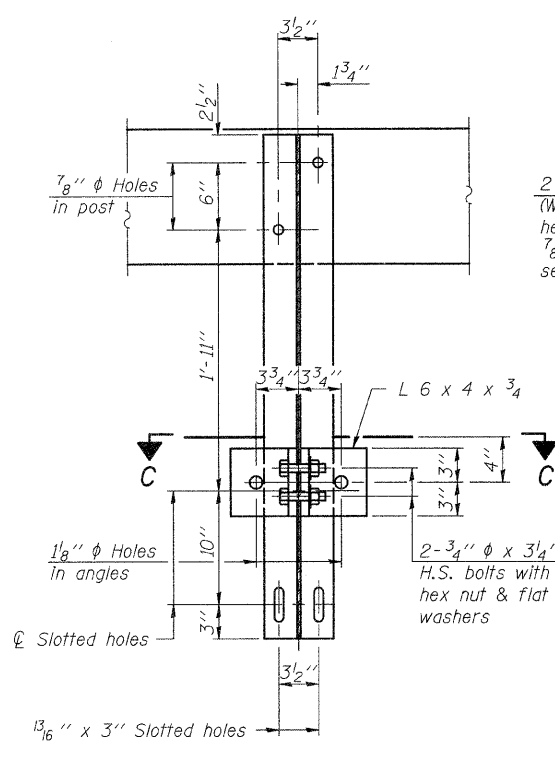


Notes:
 All field drilled holes shall be coated with an approved zinc rich paint before erection.
 All steel rail elements shall be galvanized according to Article 509.05 of the Standard Specifications.
 * Threaded areas of nuts or pipes used for anchor devices shall be plugged or blocked off during casting of beam.
 ** The studs of the anchor devices shall be placed below the top reinforcement bars and the outermost longitudinal reinforcement bar shall be placed directly above the studs of the rail post anchor device.
 The Cost of Curled End Sections is included in the cost of "Steel Railing, Type S1".
 See Sheet 2 of 15 for Rail Post Spacing.



BILL OF MATERIAL

Item	Unit	Quantity
Steel Railing, Type S-1	Foot	256

R-23A 7-1-10 (10'-9" Maximum Post Spacing)

FILE NAME = 11-137-RAIL-S1.DGN	USER NAME = S.A.P.	DESIGNED - A.R.K.	REVISED -
		CHECKED - R.E.A.	REVISED -
	PLOT SCALE = XXX	DRAWN - S.A.P.	REVISED -
	PLOT DATE = 01/04/12	CHECKED - A.R.K.	REVISED -

FEHR-GRAHAM & ASSOCIATES, LLC
 ENGINEERING AND SCIENCE CONSULTANTS
 FREEPORT, IL ROCKFORD, IL ROCHELLE, IL MONROE, WI SPRINGFIELD, IL

STEEL RAILING, TYPE S-1
 S.N. 038-5157
 SHEET NO. 7 OF 15 SHEETS

TWP. RTE. 351	SECTION 08-22102-01-BR	COUNTY IROQUOIS	TOTAL SHEETS 25	SHEET NO. 10
				CONTRACT NO. 87493
				ILLINOIS PIGEON GROVE ROAD DISTRICT