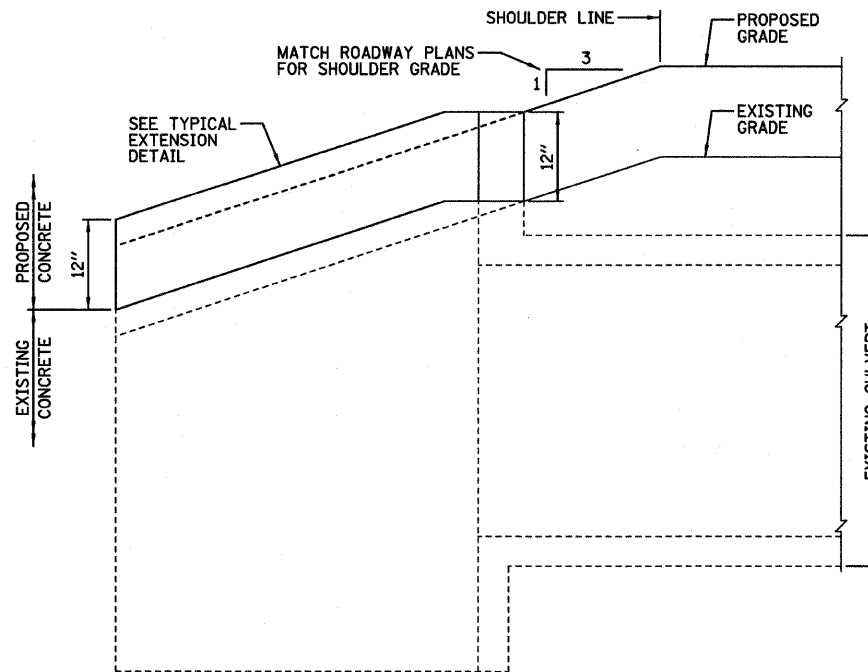


GENERAL NOTES

EXCEPT AS NOTED ON THE PLANS, PAVEMENT GRADES SHOWN ARE AT THE TOP OF PAVEMENT SURFACES.
 FOR STABILIZATION, ALL TYPE III BARRICADES SHALL REQUIRE A MINIMUM OF FOUR SAND BAGS PER BARRICADE.
 WHERE SECTION OR SUBSECTION MONUMENTS ARE ENCOUNTERED, THE ENGINEER SHALL BE NOTIFIED BEFORE SUCH MONUMENTS ARE REMOVED. THE CONTRACTOR SHALL PROTECT AND CAREFULLY PRESERVE ALL MONUMENTS UNTIL AN AUTHORIZED SURVEYOR OR AGENT HAS WITNESSED OR OTHERWISE REFERENCED THEIR LOCATION. THE CONTRACTOR SHALL BE RESPONSIBLE FOR HAVING AN AUTHORIZED SURVEYOR REESTABLISH ANY SECTION OR SUBSECTION MONUMENTS DESTROYED BY HIS OPERATIONS.
 SEEDING SHALL NOT BE PERMITTED AT ANY TIME WHEN THE GROUND IS FROZEN, WET, OR IN AN UNTILLABLE CONDITION. LOCATIONS TO BE SEEDED WILL BE DETERMINED BY THE ENGINEER.
 THE FINISHED EARTHWORK SHALL HAVE A VEGETATION SUSTAINING SOIL COVERING THE TOP FOUR INCHES IN AREAS TO BE SEEDED OR SODDED. THE VEGETATION SUSTAINING SOIL REQUIRED WILL NOT BE PAID FOR SEPARATELY BUT SHALL BE INCLUDED IN THE COST OF EARTH EXCAVATION.
 ALL ELEVATIONS REFER TO U.S.G.S. MEAN SEA LEVEL DATUM.
 ABANDONED UNDERGROUND UTILITIES THAT CONFLICT WITH CONSTRUCTION SHALL BE DISPOSED OF OUTSIDE THE LIMITS OF THE RIGHT OF WAY ACCORDING TO ARTICLE 202.03 OF THE STANDARD SPECIFICATIONS AND AS DIRECTED BY THE ENGINEER. THIS WORK WILL NOT BE PAID FOR SEPARATELY, BUT SHALL BE INCLUDED IN THE COST OF EARTH EXCAVATION.
 ANY REFERENCE TO A STANDARD IN THESE PLANS SHALL BE INTERPRETED TO MEAN THE EDITION AS INDICATED BY THE SUBNUMBER SHOWN IN THE LIST OF STANDARDS INCLUDED IN THESE PLANS.
 THE CONTRACTOR SHALL BE RESPONSIBLE FOR PROTECTING UTILITY PROPERTY FROM CONSTRUCTION OPERATIONS AS OUTLINED IN ARTICLE 107.31 OF THE STANDARD SPECIFICATIONS.

COMMITMENTS

NONE

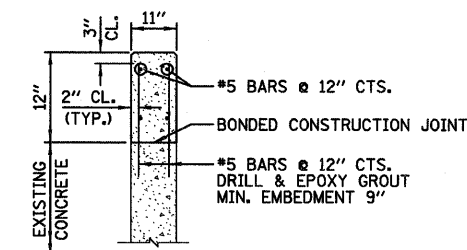


TYPICAL HEADWALL / WINGWALL EXTENSION

12' x 5' BOX CULVERT @ STA. 13+00

DESIGN STRESSES
FIELD UNITS

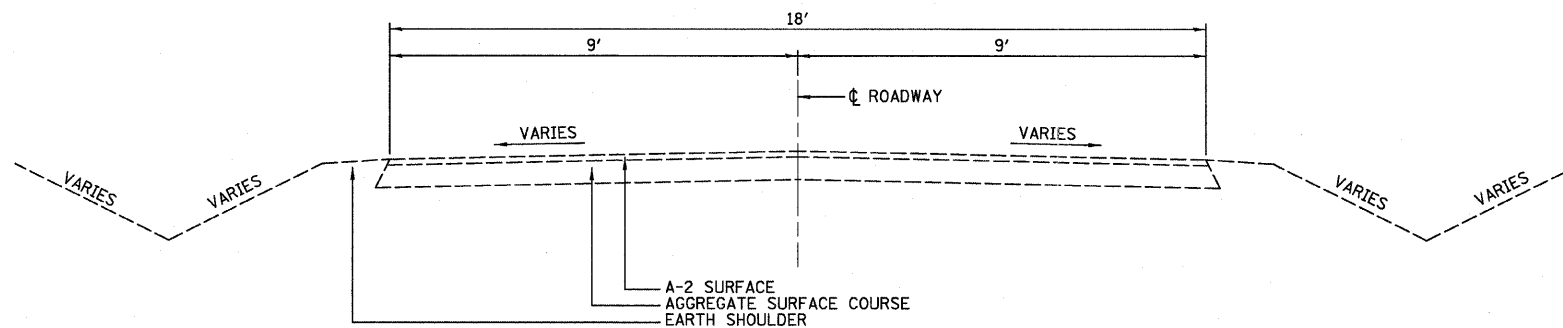
f'c = 3,500 psi (CAST-IN-PLACE)
 fy = 60,000 psi (REINFORCEMENT)



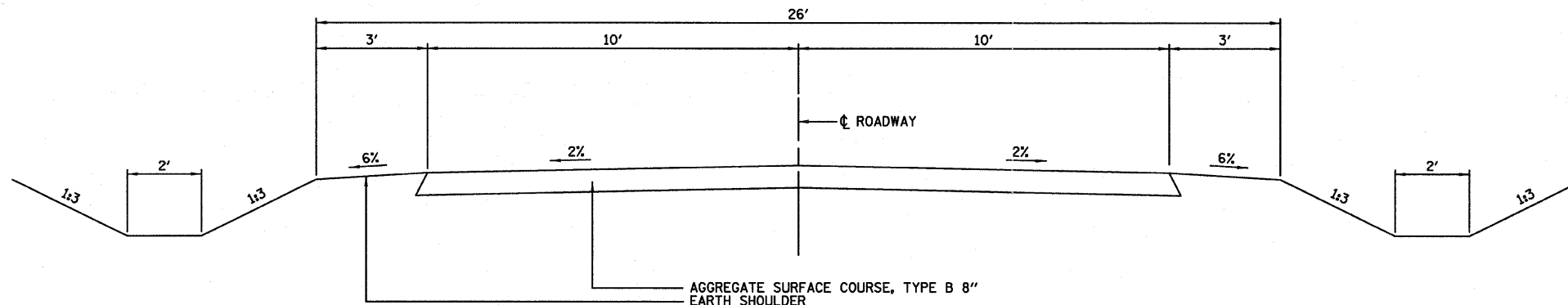
TYPICAL EXTENSION DETAIL

NOTES:

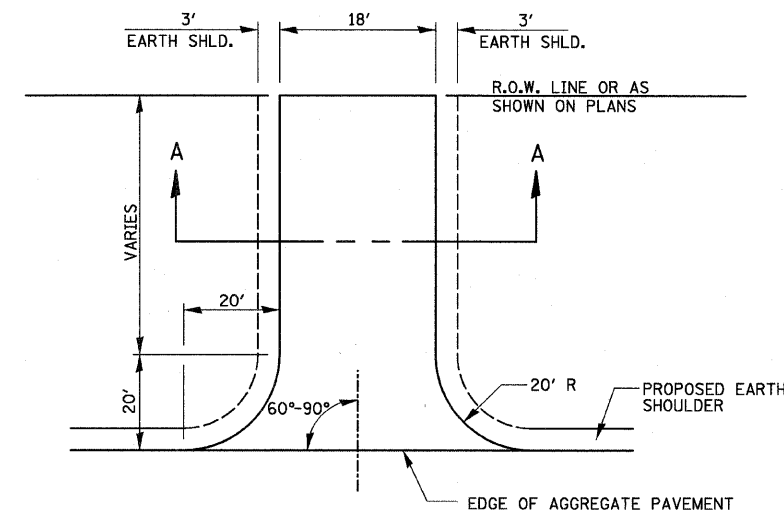
- 1.) THE COST OF THE HEADWALL/WINGWALL EXTENSION SHALL BE INCLUDED IN THE COST OF "AGGREGATE SURFACE COURSE, TYPE B".
- 2.) FIELD VERIFY ALL EXISTING HEADWALL/WINGWALL DIMENSIONS AND ADJUST ACCORDINGLY.



EXISTING TYPICAL CROSS SECTION

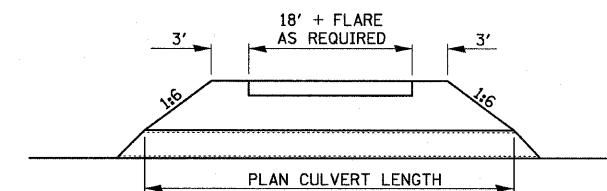


PROPOSED TYPICAL CROSS SECTION



PRIVATE ENTRANCE DETAIL

NOTE: PRIVATE ENTRANCE AND MAILBOX TURNOUT SHALL BE AGGREGATE SURFACE COURSE, TYPE B 6".



SECTION A-A



USER NAME = #USER#	DESIGNED - JML	REVISED -
PLOT SCALE = #SCALE#	DRAWN - JJO	REVISED -
PLOT DATE = #DATE#	CHECKED - MSW	REVISED -
	DATE - 02/06/12	REVISED -

STATE OF ILLINOIS
 DEPARTMENT OF TRANSPORTATION

GENERAL NOTES, COMMITMENTS AND MISCELLANEOUS DETAILS

SCALE: SHEET NO. OF SHEETS STA. TO STA.

T.R.	SECTION	COUNTY	TOTAL SHEETS	SHEET NO.
169	09-20110-02-BR	LIVINGSTON	17	2
CONTRACT NO. 87496				
FED. ROAD DIST. NO. ILLINOIS FED. AID PROJECT				