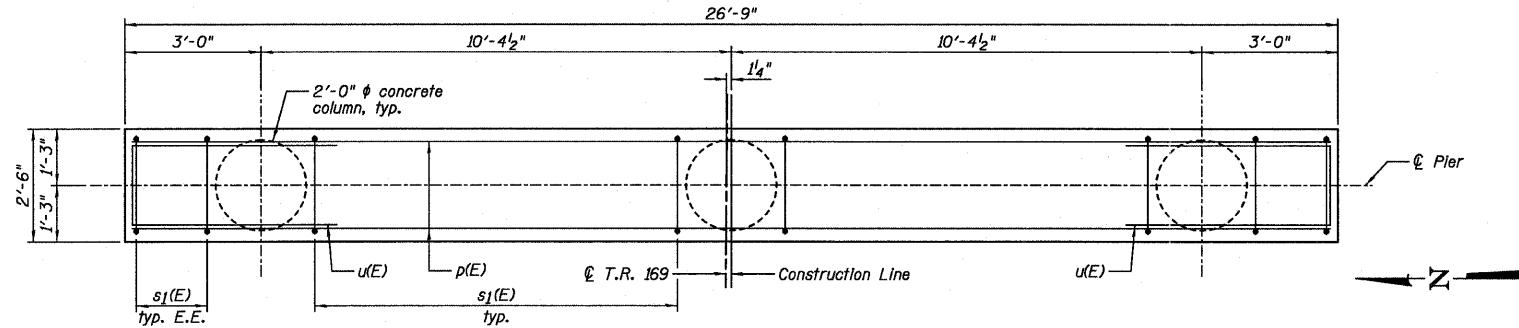
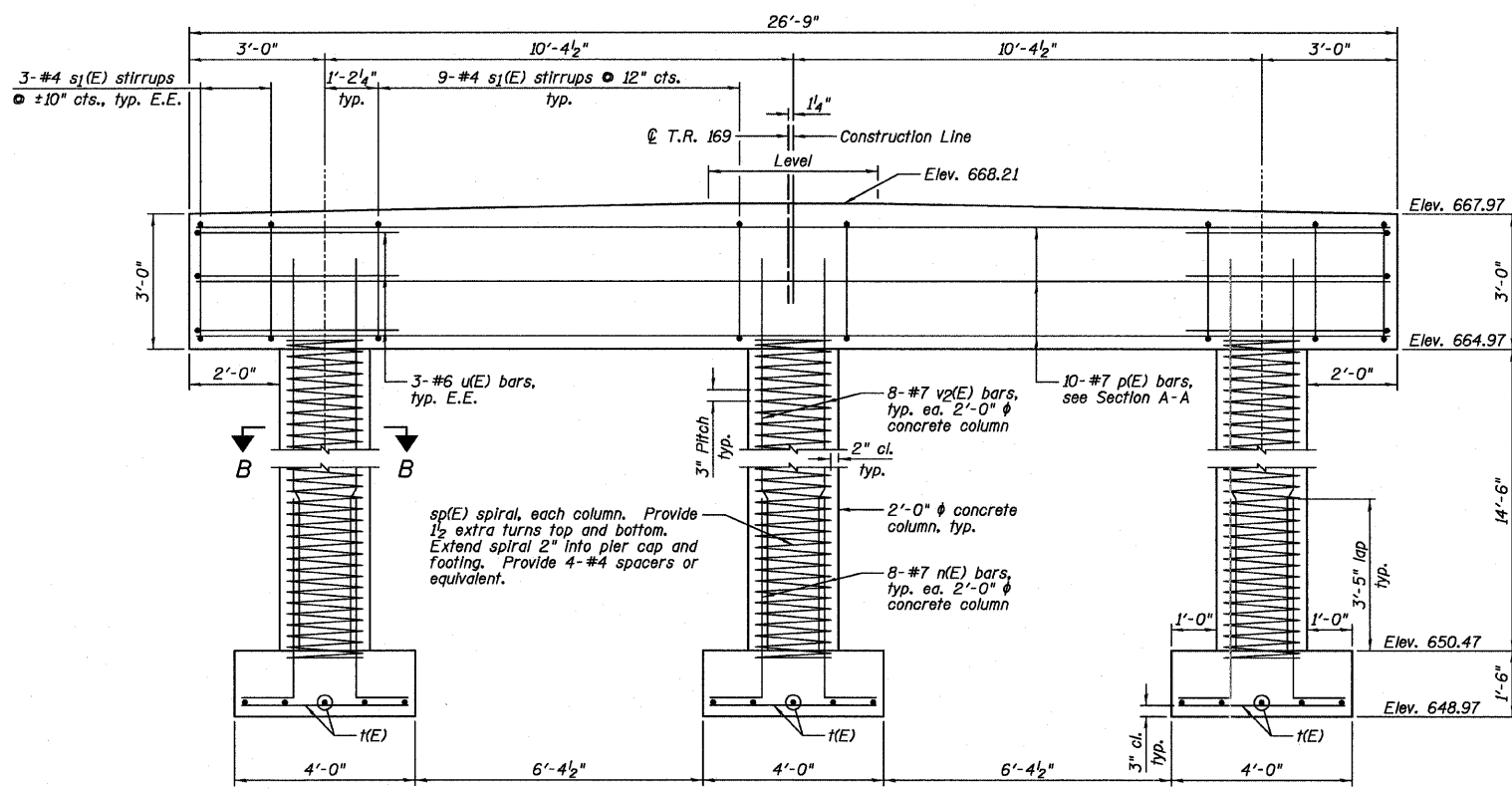


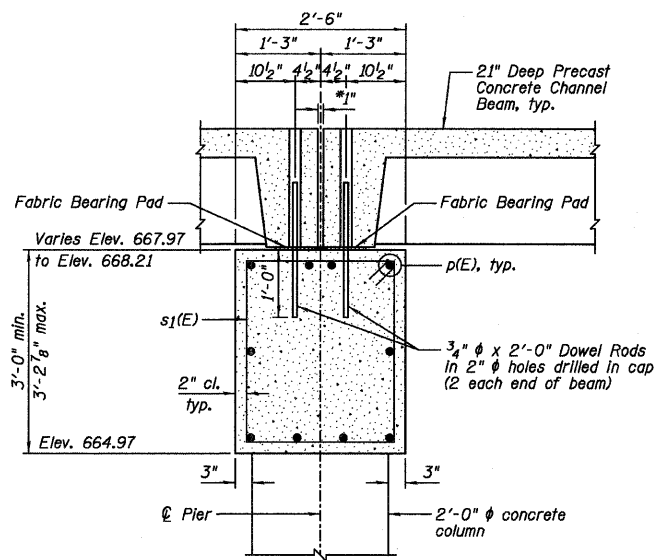
PLAN



PLAN - PIER CAP

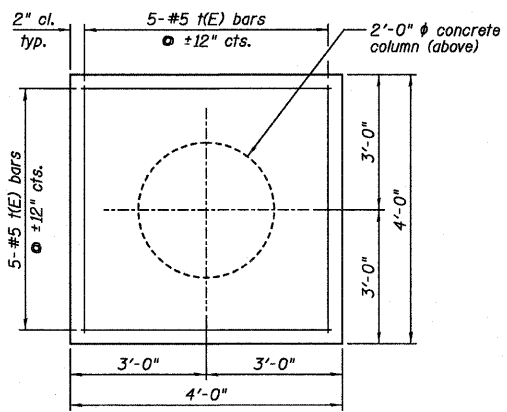
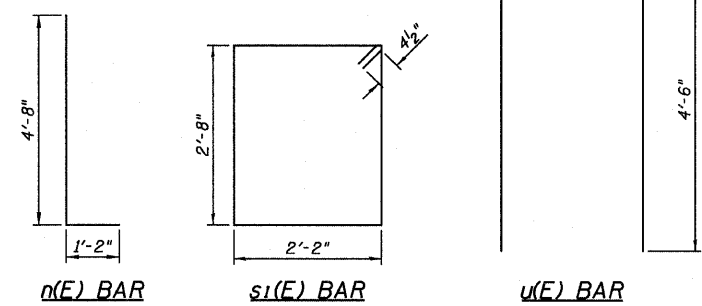


ELEVATION

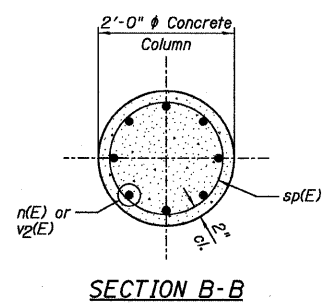


SECTION A-A

*Approximate distance between Precast Concrete Channel Beams shall be filled with non-shrink grout. 1" dimension may vary to accommodate tolerance in beam lengths.



FOOTING PLAN



SECTION B-B

NOTES:

- 1.) E.E. denotes Each End.
- 2.) Calculated maximum footing bearing pressure = 8.4 ksf (service).

TWO PIERS
BILL OF MATERIAL

Bar	No.	Size	Length	Shape
n(E)	48	#7	5'-10"	
p(E)	20	#7	26'-5"	
s1(E)	48	#4	10'-5"	□
sp(E)	6	#4	14'-10"	∩∩
u(E)	60	#5	3'-8"	
v2(E)	12	#6	11'-1"	□
v2(E)	48	#7	16'-6"	
Item	Unit	Quantity		
Cofferdam Excavation	Cu. Yd.	80		
Rock Excavation For Structures	Cu. Yd.	9		
Concrete Structures	Cu. Yd.	31.0		
Seal Coat Concrete	Cu. Yd.	1.8		
Reinforcement Bars, Epoxy Coated	Pound	4,090		

**Length is height of spiral.

Farnsworth GROUP, INC.
2709 McDraw Drive
Bloomington, Illinois 61704
309/693-9435, 309/693-1571 fax

DESIGNED - CEE
CHECKED - JML
DRAWN - DJM
DATE - 02/06/12

REVISOR
REVISOR
REVISOR
REVISOR

STATE OF ILLINOIS
DEPARTMENT OF TRANSPORTATION

PIERS
SHEET NO. B6 OF 9 SHEETS

T.R.	SECTION	COUNTY	TOTAL SHEETS	SHEET NO.
169	09-20110-02-BR	LIVINGSTON	17	11
CONTRACT NO. 87496				
ILLINOIS FED. AID PROJECT				