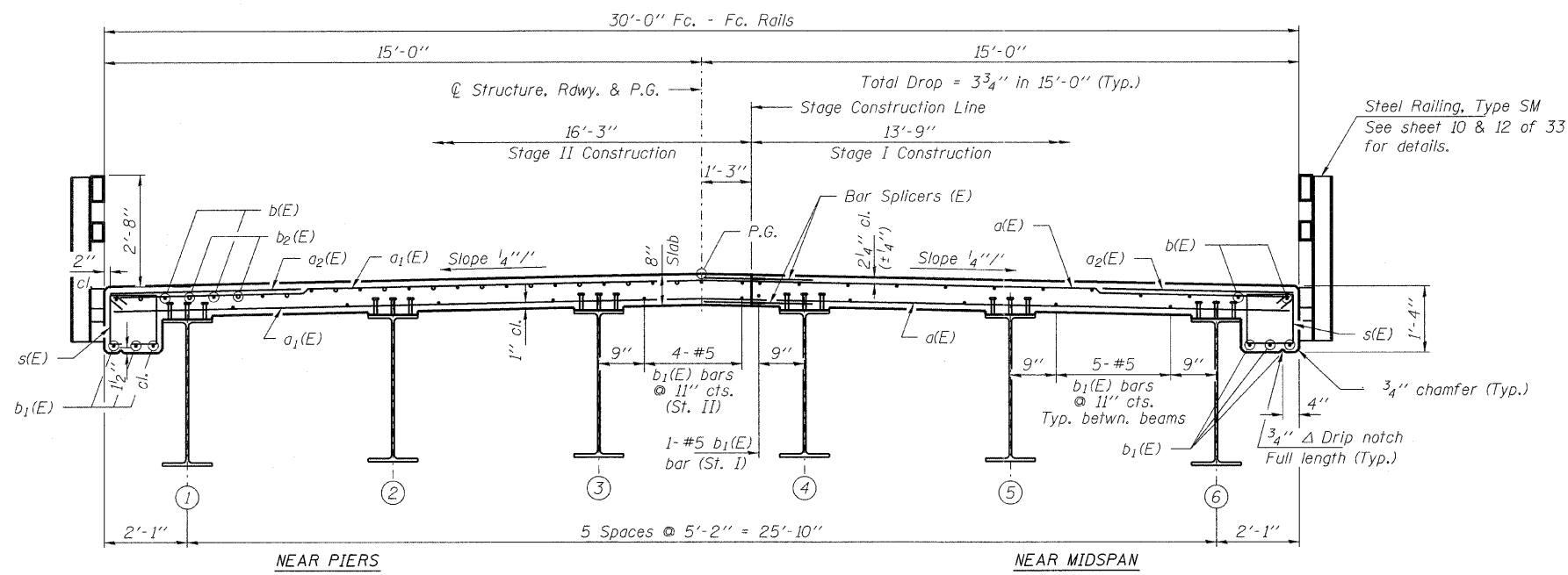


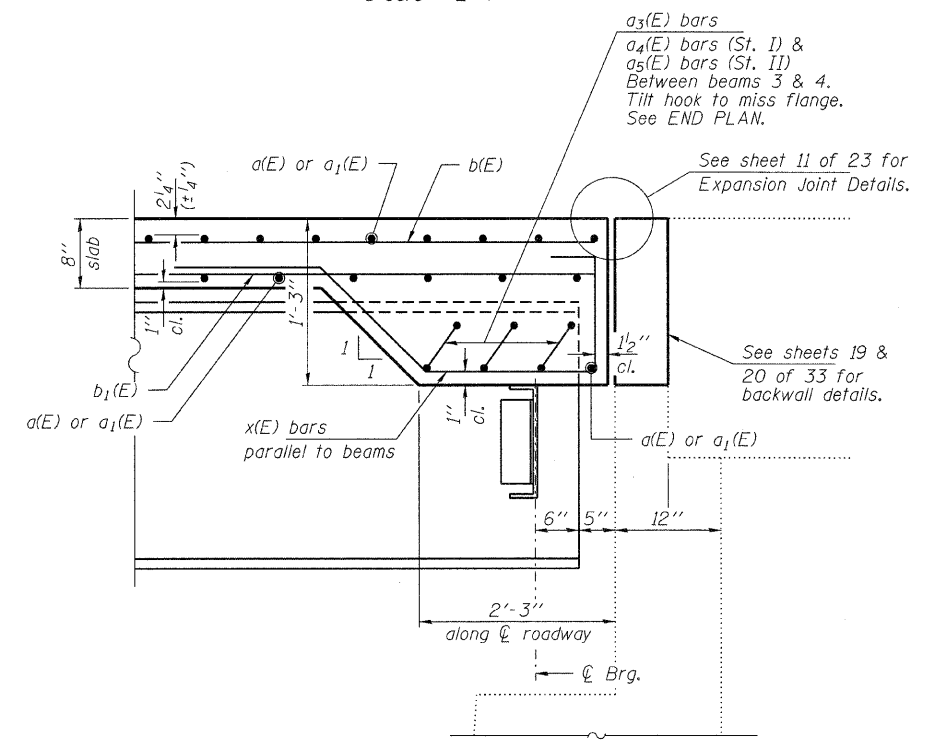
PLAN



CROSS SECTION  
(Looking East)

Notes:  
 Reinforcement bars in the top of the deck may be placed with a 1/2" minimum clearance in the area of the rail post anchor devices. The studs of the anchor devices shall be placed below the top reinforcement bars and the outermost longitudinal reinforcement bar shall be placed directly above the studs of the rail post anchor device.  
 Bars indicated thus 2x3-#6 etc. indicates 2 lines of bars with 3 lengths per line.  
 See sheet 10 of 33 for Superstructure Details, END PLAN and Bill of Material.  
 See sheet 10 of 33 for Section A-A.  
 All bars shall be epoxy coated.

MIN. BAR LAPS  
 #5 bars = 2'-7"



SECTION A-A

FILE NAME = 100108-sht-br-bridge.dgn	USER NAME =	DESIGNED - C.C.S.	REVISED -	<b>STATE OF ILLINOIS VERMILION COUNTY HIGHWAY DEPARTMENT</b>	<b>SUPERSTRUCTURE STRUCTURE NO. 092-0085</b>	FAU	SECTION	COUNTY	TOTAL SHEETS	SHEET NO.	
HAMPTON, LENZINI AND RENWICK, INC. 3085 STEVENSON DRIVE, SUITE 201 SPRINGFIELD, ILLINOIS 62715 ILLINOIS PROFESSIONAL DESIGN FIRM LS / PE / SE CORP. 194.000969	PLOT SCALE =	CHECKED - S.M.S.	REVISED -			7043	09-00171-00-BR	VERMILION	66	42	
	PLOT DATE = 2/9/2012	DRAWN - D.A.B.	REVISED -			CONTRACT NO. 91449					
		CHECKED - S.W.M.	REVISED -			ILLINOIS FED. AID PROJECT					
SHEET NO. 9 OF 33 SHEETS											