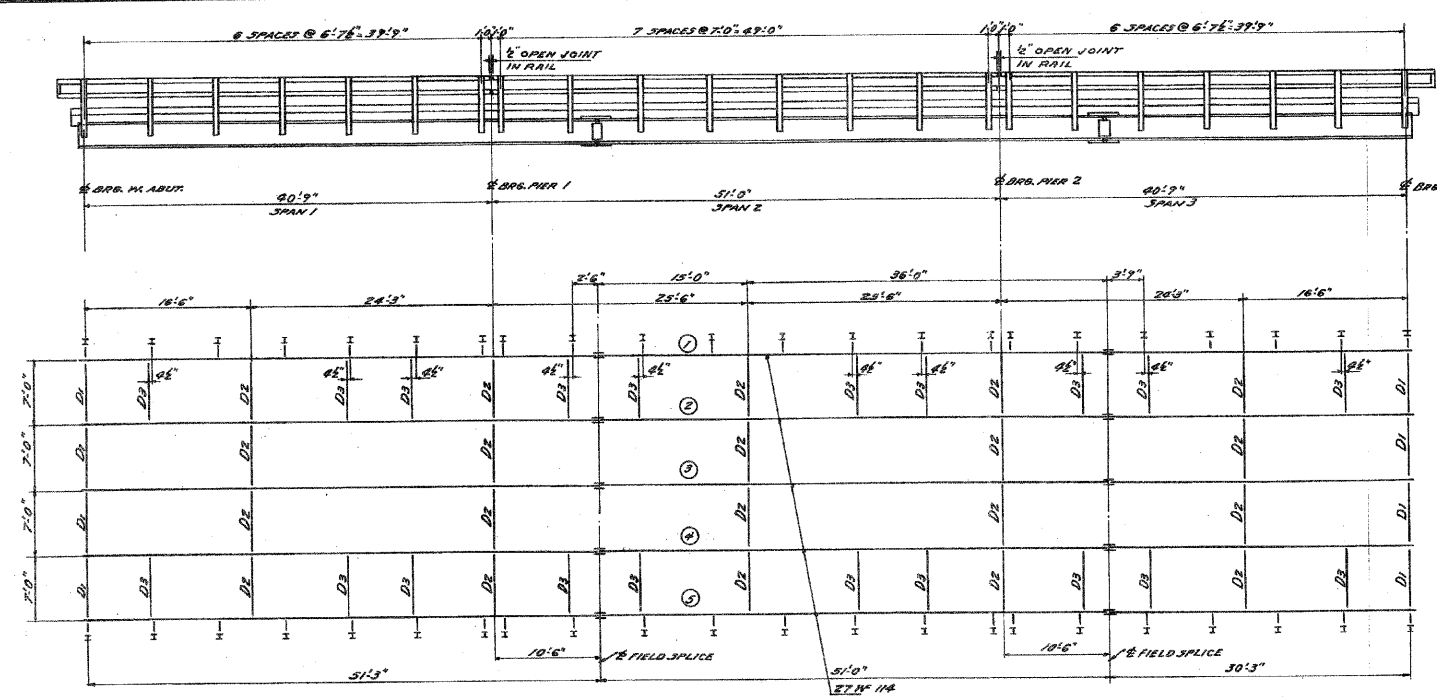
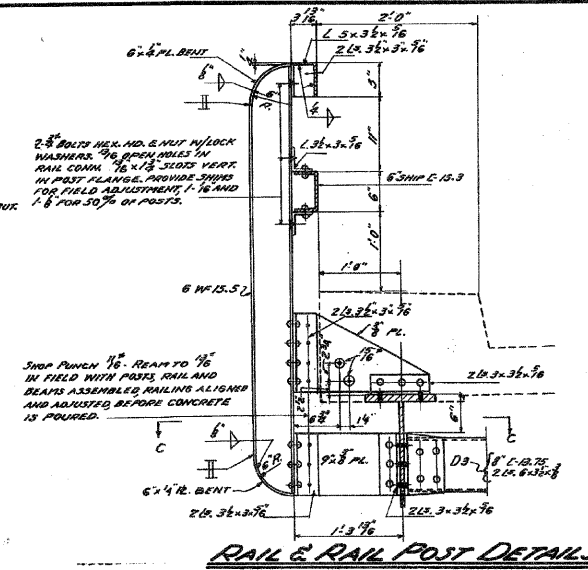


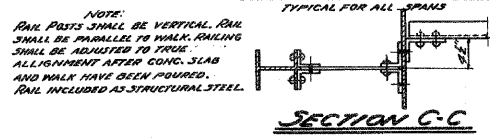
ROUTE NO.	SEC.	COUNTY	SHEETS	SHEET NO.
504	51B	Vermilion	20	5
FED. ROAD DIST. NO. 7 ILLINOIS PROJECT			3-72 (2)	SHEETS



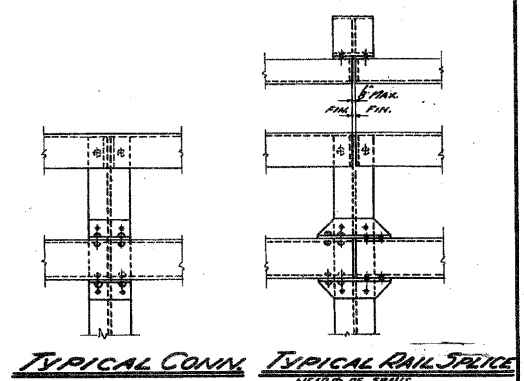
PLAN AND ELEVATION OF STRUCTURAL STEEL



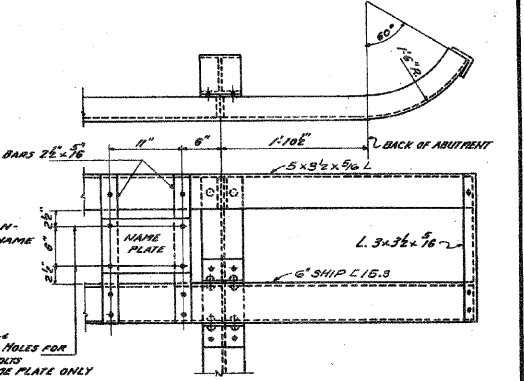
RAIL & RAIL POST DETAILS



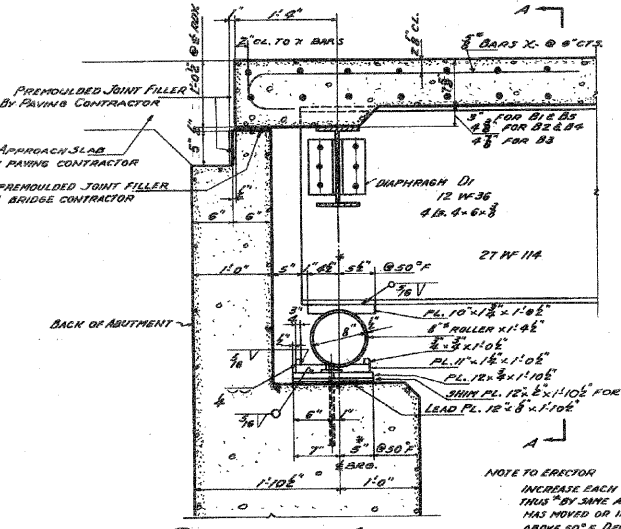
SECTION C-C



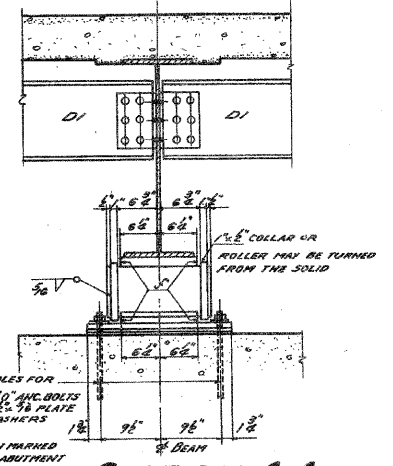
TYPICAL CONN. TYPICAL RAIL SPLICE



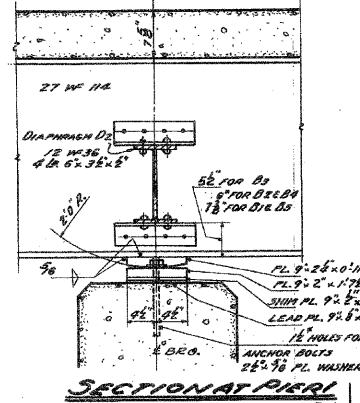
TYPICAL RAIL BEND



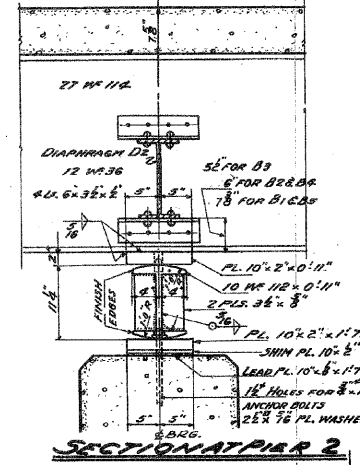
SECTION AT ABUTMENT



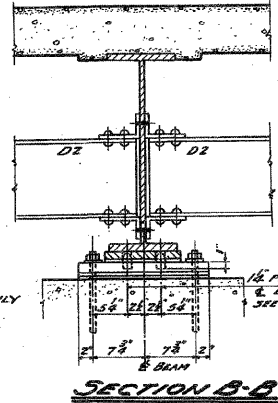
SECTION A-A



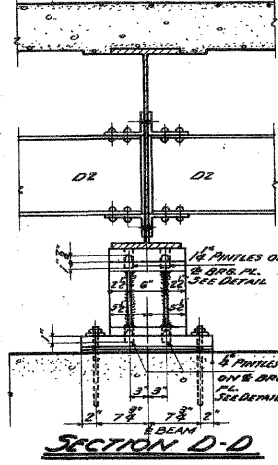
SECTION AT PIER 1



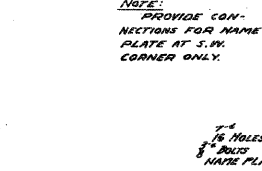
SECTION AT PIER 2



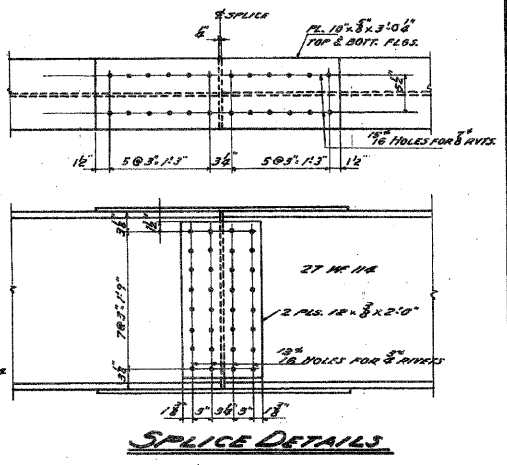
SECTION B-B



SECTION D-D

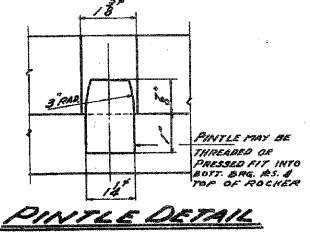


DETAIL OF DIAPHRAGM D2 BETWEEN SUPPORTS



SPLICE DETAILS

APPROVED *Walter C. ...* by *CRK 1-9-51*
 EXAMINED *H. T. ...* 3-26-51
 PASSED _____ ENGINEER OF DESIGN
 APPROVED _____ CHIEF HIGHWAY ENGINEER



PINTLE DETAIL

STRUCTURAL STEEL PLAN AND DETAILS
STONY CREEK BRIDGE
 PROJECT 5-72 (2)
 F.A.3.RTE. 504 S.A. RTE. 4
 SECTION 51-B
 VERMILION COUNTY
 STA. 174+50

ALFRED BENESCH & ASSOCIATES
 CONSULTING ENGINEERS
 30 EAST ADAMS ST. CHICAGO 3, ILL.

FILE NAME = 100108-sht-ExistPlans.dgn	USER NAME =	DESIGNED - C.C.S.	REVISED -	STATE OF ILLINOIS VERMILION COUNTY HIGHWAY DEPARTMENT	EXISTING PLANS STRUCTURE NO. 092-0085 SHEET NO. 26 OF 33 SHEETS	FAU	SECTION	COUNTY	TOTAL SHEETS	SHEET NO.	
HAMPTON, LENZINI AND RENWICK, INC. 3683 STEVENSON DRIVE, SUITE 201 SPRINGFIELD, ILLINOIS 62703	PLOT SCALE =	CHECKED - S.M.S.	REVISED -			7043	09-00171-00-BR	VERMILION	66	59	
ILR ILLINOIS PROFESSIONAL DESIGN FIRM 151 PE/SE CORP. 184 00089	PLOT DATE = 2/9/2012	DRAWN - D.A.B.	REVISED -			CONTRACT NO. 91449					
		CHECKED - S.W.M.	REVISED -			ILLINOIS FED. AID PROJECT					