

# SECTION 7, T.12N., R.10W., 2nd P.M.

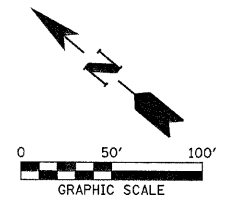
F.A.S.	SECTION	COUNTY	TOTAL SHEETS	SHEET NO.
680	10-00101-00-SP	EDGAR	132	20
EDGAR COUNTY, ILLINOIS		CONTRACT NO. 91467		

EXIST.  $\phi$  CURVE DATA  
 PI STA. = 55+54.62  
 $\Delta = 7^\circ 50' 22''$  (RT)  
 $D = 2^\circ 05' 01''$   
 $R = 2,750.00'$   
 $T = 188.43'$   
 $L = 376.26'$   
 $E = 6.45'$   
 $e = 0.05$  FT/FT  
 $T.R. = 38.30'$   
 $S.E. RUN = 117'$   
 $P.C. STA. = 53+66.20$   
 $P.T. STA. = 57+42.46$   
S.E. ATTAINED:  
 STATION 52+49.72 TO STATION 54+05.01  
 STATION 57+03.65 TO STATION 58+58.94

### GUARDRAIL LEGEND

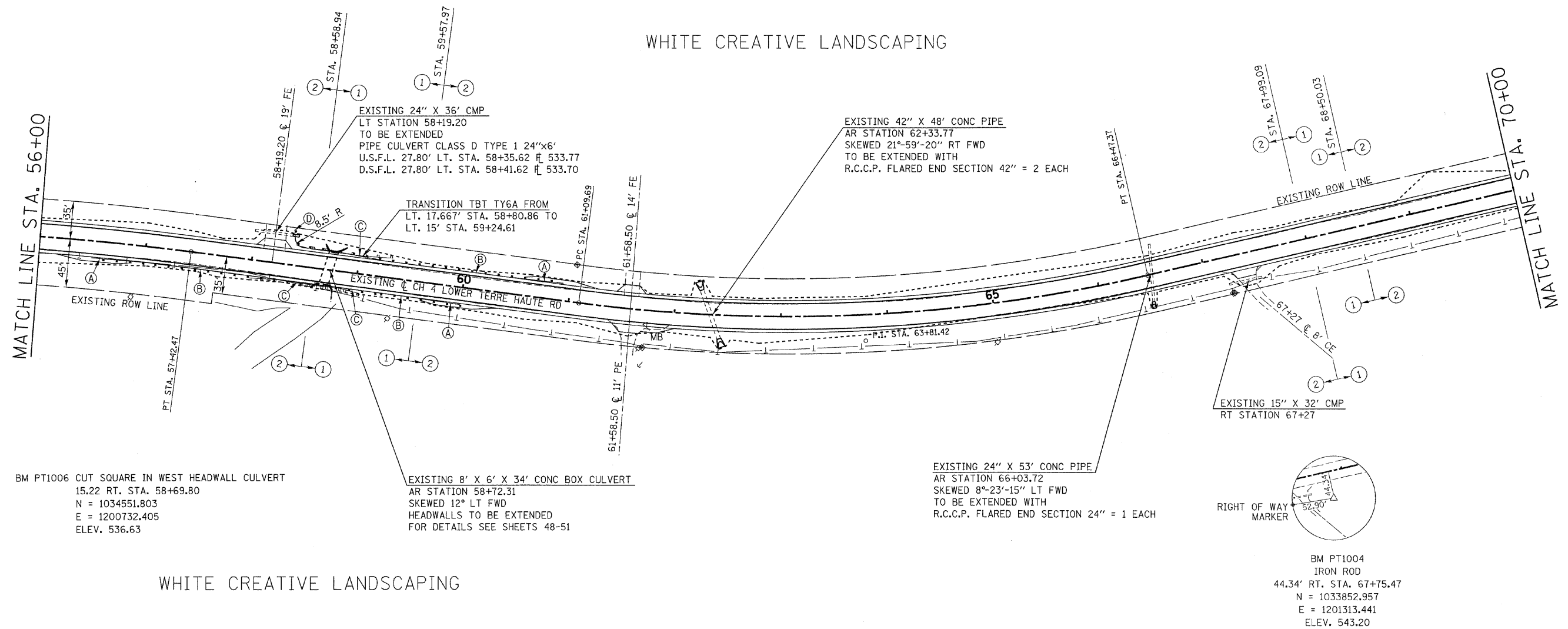
- (A) TBT TYPE 1 (SP) TANGENT  
 LT. STA. 60+32.67 TO LT. STA. 60+82.67  
 RT. STA. 56+58.77 TO RT. STA. 57+08.77  
 RT. STA. 59+42.19 TO RT. STA. 59+92.19
- (B) SPBGR TYPE A  
 LT. STA. 59+20.17 TO LT. STA. 60+32.67  
 RT. STA. 57+08.77 TO RT. STA. 58+21.27  
 RT. STA. 59+17.19 TO RT. STA. 59+42.19
- (C) TBT TYPE 6A  
 LT. STA. 58+76.28 TO LT. STA. 59+20.17  
 RT. STA. 58+21.17 TO RT. STA. 58+65.16  
 RT. STA. 58+73.30 TO RT. STA. 59+17.19
- (D) TBT TYPE 6A MODIFIED  
 LT. STA. 58+62.36 TO LT. STA. 58+76.06  $R = 8.5'$

EXIST.  $\phi$  CURVE DATA  
 PI STA. = 63+81.41  
 $\Delta = 20^\circ 27' 45''$  (LT)  
 $D = 3^\circ 48' 21''$   
 $R = 1,505.48'$   
 $T = 271.73'$   
 $L = 537.66'$   
 $E = 24.33'$   
 $e = 0.07$  FT/FT  
 $T.R. = 38.30'$   
 $S.E. RUN = 164'$   
 $P.C. STA. = 61+09.68$   
 $P.T. STA. = 66+47.34$   
S.E. ATTAINED:  
 STATION 59+57.97 TO STATION 61+60.26  
 STATION 65+96.80 TO STATION 67+99.09



WHITE CREATIVE LANDSCAPING

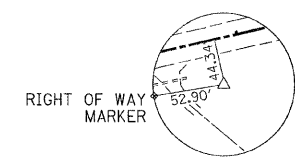
STATE BANK OF CHRISMAN, TRUST NO 507



BM PT1006 CUT SQUARE IN WEST HEADWALL CULVERT  
 15.22 RT. STA. 58+69.80  
 $N = 1034551.803$   
 $E = 1200732.405$   
 ELEV. 536.63

EXISTING 8' X 6' X 34' CONC BOX CULVERT  
 AR STATION 58+72.31  
 SKEWED 12° LT FWD  
 HEADWALLS TO BE EXTENDED  
 FOR DETAILS SEE SHEETS 48-51

EXISTING 24" X 53' CONC PIPE  
 AR STATION 66+03.72  
 SKEWED 8°-23'-15" LT FWD  
 TO BE EXTENDED WITH  
 R.C.C.P. FLARED END SECTION 24" = 1 EACH



BM PT1004  
 IRON ROD  
 44.34' RT. STA. 67+75.47  
 $N = 1033852.957$   
 $E = 1201313.441$   
 ELEV. 543.20

WHITE CREATIVE LANDSCAPING

FILE NAME =  
 118338-sht-plans.dgn  
 PLOT DATE = 1/19/2012  
 SCALE: 1" = 50'



# SECTION 7, T.12N., R.10W., 2nd P.M.

