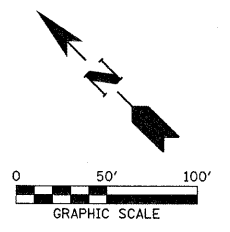


# SECTION 7, T.12N., R.10W., 2nd P.M.

F.A.S.	SECTION	COUNTY	TOTAL SHEETS	SHEET NO.
680	10-00101-00-SP	EDGAR	132	22
EDGAR COUNTY, ILLINOIS		CONTRACT NO. 91467		

PROPOSED  $\phi$  CURVE DATA  
 PI STA. = 88+04.47  
 $\Delta = 46^\circ 35' 42''$  (RT)  
 $D = 8^\circ 08' 45''$   
 $R = 703.37'$   
 $T = 302.88'$   
 $L = 572.01'$   
 $E = 62.44'$   
 $e = 0.08$  FT/FT  
 $T.R. = 33.33'$   
 $S.E. RUN = 163'$   
 $P.C. STA. = 85+01.62$   
 $P.T. STA. = 90+73.59$   
S.E. ATTAINED:  
 STATION 83+54.37 TO STATION 85+50.70  
 STATION 90+24.54 TO STATION 92+20.87

PROPOSED  $\phi$  CURVE DATA  
 PI STA. = 98+65.14  
 $\Delta = 63^\circ 12' 44''$  (LT)  
 $D = 8^\circ 16' 00''$   
 $R = 693.10'$   
 $T = 426.50'$   
 $L = 764.67'$   
 $E = 120.71'$   
 $e = 0.08$  FT/FT  
 $T.R. = 33.33'$   
 $S.E. RUN = 163'$   
 $P.C. STA. = 94+36.48$   
 $P.T. STA. = 101+99.21$   
S.E. ATTAINED:  
 STATION 92+91.39 TO STATION 94+87.22  
 STATION 101+44.17 TO STATION 103+40.50



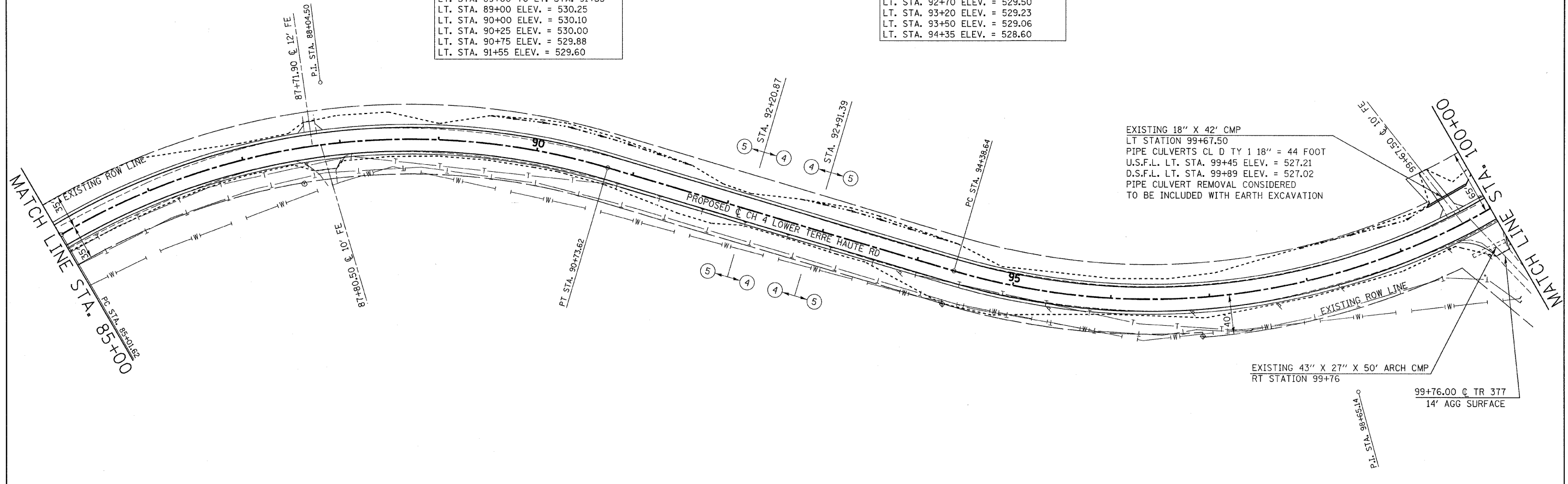
STATE BANK OF CHRISMAN, TRUST NO 507

CONSTRUCT 2' BOTTOM SPECIAL DITCH  
 LT. STA. 89+00 TO LT. STA. 91+55  
 LT. STA. 89+00 ELEV. = 530.25  
 LT. STA. 90+00 ELEV. = 530.10  
 LT. STA. 90+25 ELEV. = 530.00  
 LT. STA. 90+75 ELEV. = 529.88  
 LT. STA. 91+55 ELEV. = 529.60

CONSTRUCT 2' BOTTOM SPECIAL DITCH  
 LT. STA. 92+70 TO LT. STA. 94+35  
 LT. STA. 92+70 ELEV. = 529.50  
 LT. STA. 93+20 ELEV. = 529.23  
 LT. STA. 93+50 ELEV. = 529.06  
 LT. STA. 94+35 ELEV. = 528.60

EXISTING 18" X 42' CMP  
 LT STATION 99+67.50  
 PIPE CULVERTS CL D TY 1 18" = 44 FOOT  
 U.S.F.L. LT. STA. 99+45 ELEV. = 527.21  
 D.S.F.L. LT. STA. 99+89 ELEV. = 527.02  
 PIPE CULVERT REMOVAL CONSIDERED  
 TO BE INCLUDED WITH EARTH EXCAVATION

EXISTING 43" X 27" X 50' ARCH CMP  
 RT STATION 99+76  
 99+76.00  $\phi$  TR 377  
 14' AGG SURFACE



STATE BANK OF CHRISMAN, TRUST NO 507

