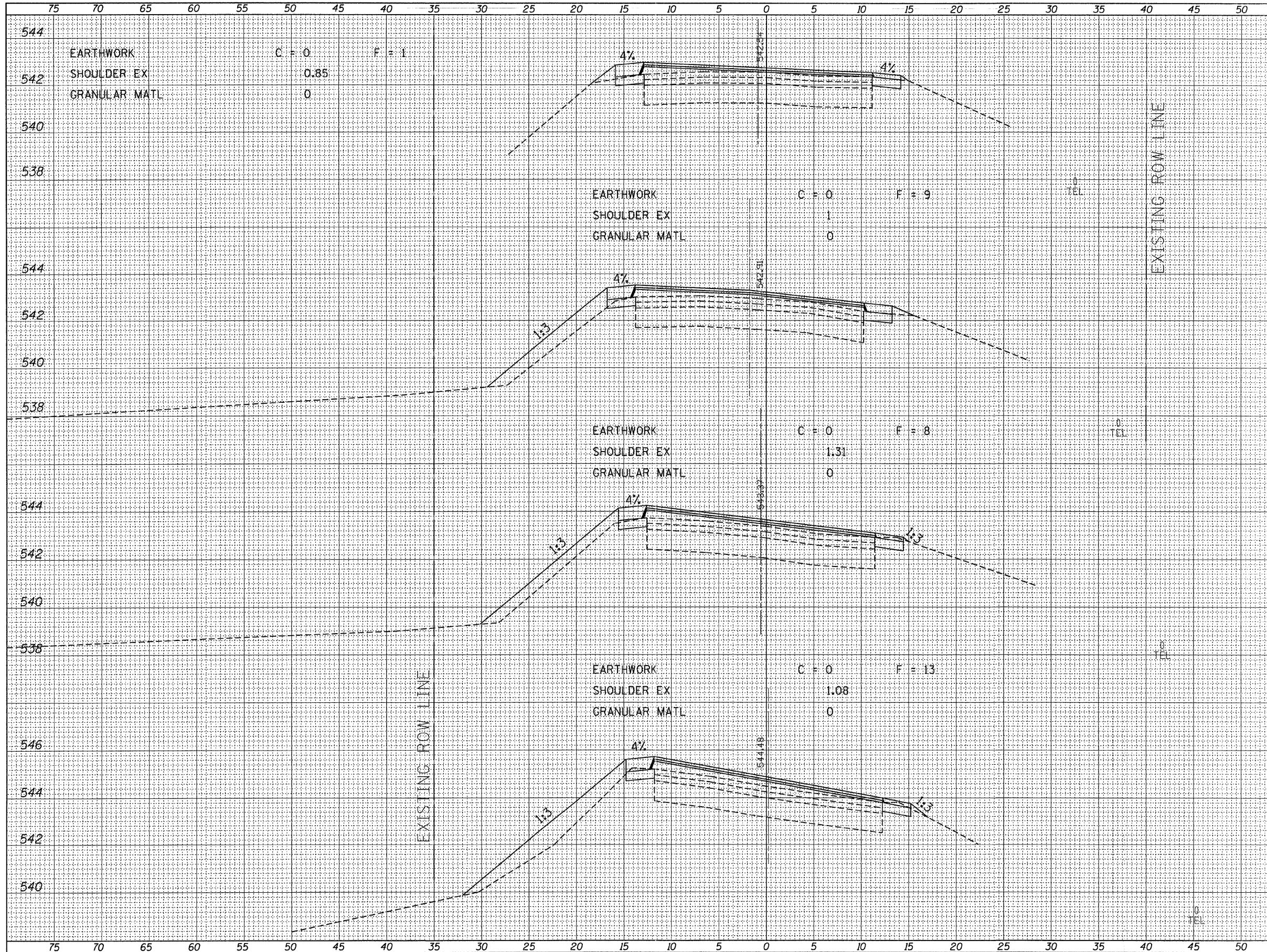


55	60	65	70	75
F.A.S.	SECTION	COUNTY	TOTAL SHEETS	SHEET NO.
680	10-00101-00-SF	EDGAR	132	73
EDGAR COUNTY, ILLINOIS		CONTRACT NO. 91467		



544	542	540	538	544	542	540	538	544	542	540	538	544	542	540	538
39 + 95.00															
39 + 45.00															
39 + 00.00															
38 + 35.00															

DATE	BY
DATE	BY
DATE	BY

DATE	BY
DATE	BY
DATE	BY

FILE NAME = 110330-sht-sxs.dgn
 PLOT DATE = 1/19/2012
 SCALE: 1" = 5' HORZ, 1" = 2' VERT



CROSS SECTIONS EAST OF ELBRIDGE
 STATION 38+35 TO STATION 39+95