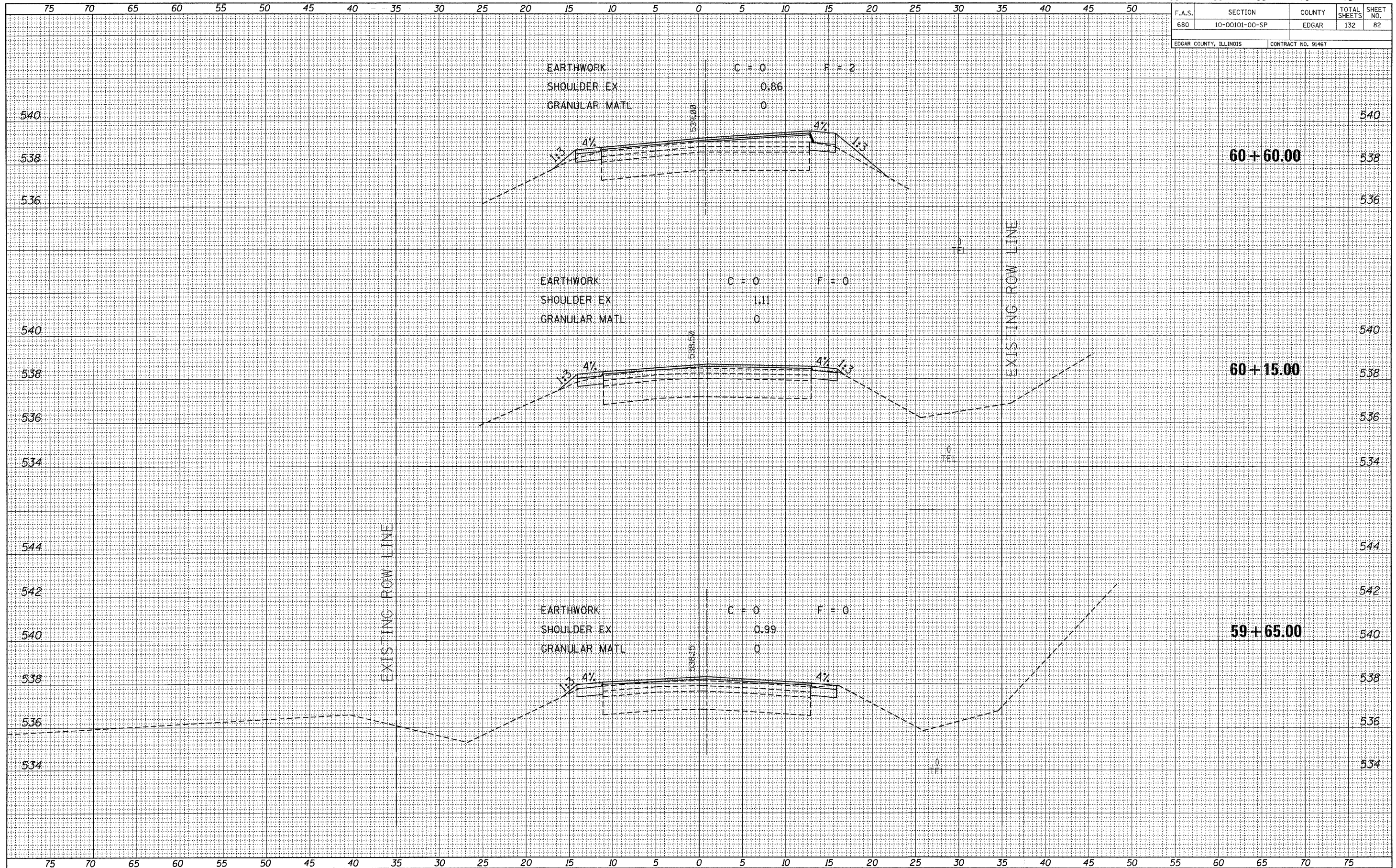


55	60	65	70	75
F.A.S.	SECTION	COUNTY	TOTAL SHEETS	SHEET NO.
680	10-00101-00-SP	EDGAR	132	82
EDGAR COUNTY, ILLINOIS		CONTRACT NO. 91467		

DATE	BY
FINAL SURVEY	SURVEYED
NOTE BOOK NO.	PLOTTED
	TEMPLATE
	AREAS CHECKED

DATE	BY
ORIGINAL SURVEY	SURVEYED
NOTE BOOK NO.	PLOTTED
	TEMPLATE
	AREAS CHECKED



FILE NAME = 110330-shr-sxs.dgn
 PLOT DATE = 1/19/2012
 SCALE: 1" = 5' HORZ, 1" = 2' VERT



CROSS SECTIONS EAST OF ELBRIDGE
 STATION 59+65 TO STATION 60+60