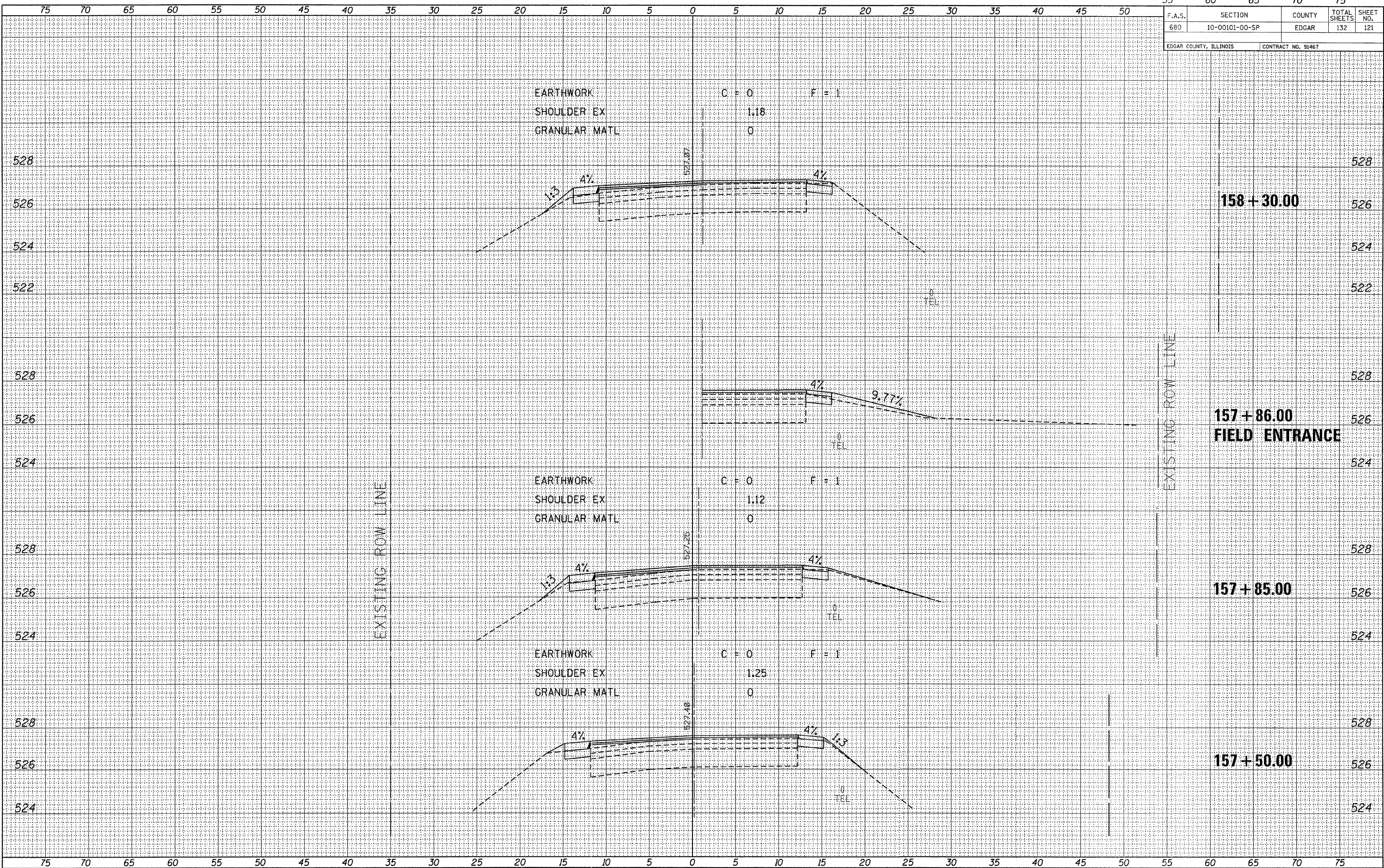


55	60	65	70	75
F.A.S.	SECTION	COUNTY	TOTAL SHEETS	SHEET NO.
680	10-00101-00-SP	EDGAR	132	121
EDGAR COUNTY, ILLINOIS			CONTRACT NO. 91467	

DATE	BY
ORIGINAL SURVEY	SURVEYED
NOTE BOOK	PLOTTED
NO.	TEMPLATE
	AREAS CHECKED

DATE	BY
ORIGINAL SURVEY	SURVEYED
NOTE BOOK	PLOTTED
NO.	TEMPLATE
	AREAS CHECKED



FILE NAME = 110330-sht-axs.dgn  
 PLOT DATE = 1/19/2012  
 SCALE: 1" = 5' HORZ, 1" = 2' VERT



**CROSS SECTIONS EAST OF ELBRIDGE**  
 STATION 157+50 TO STATION 158+30