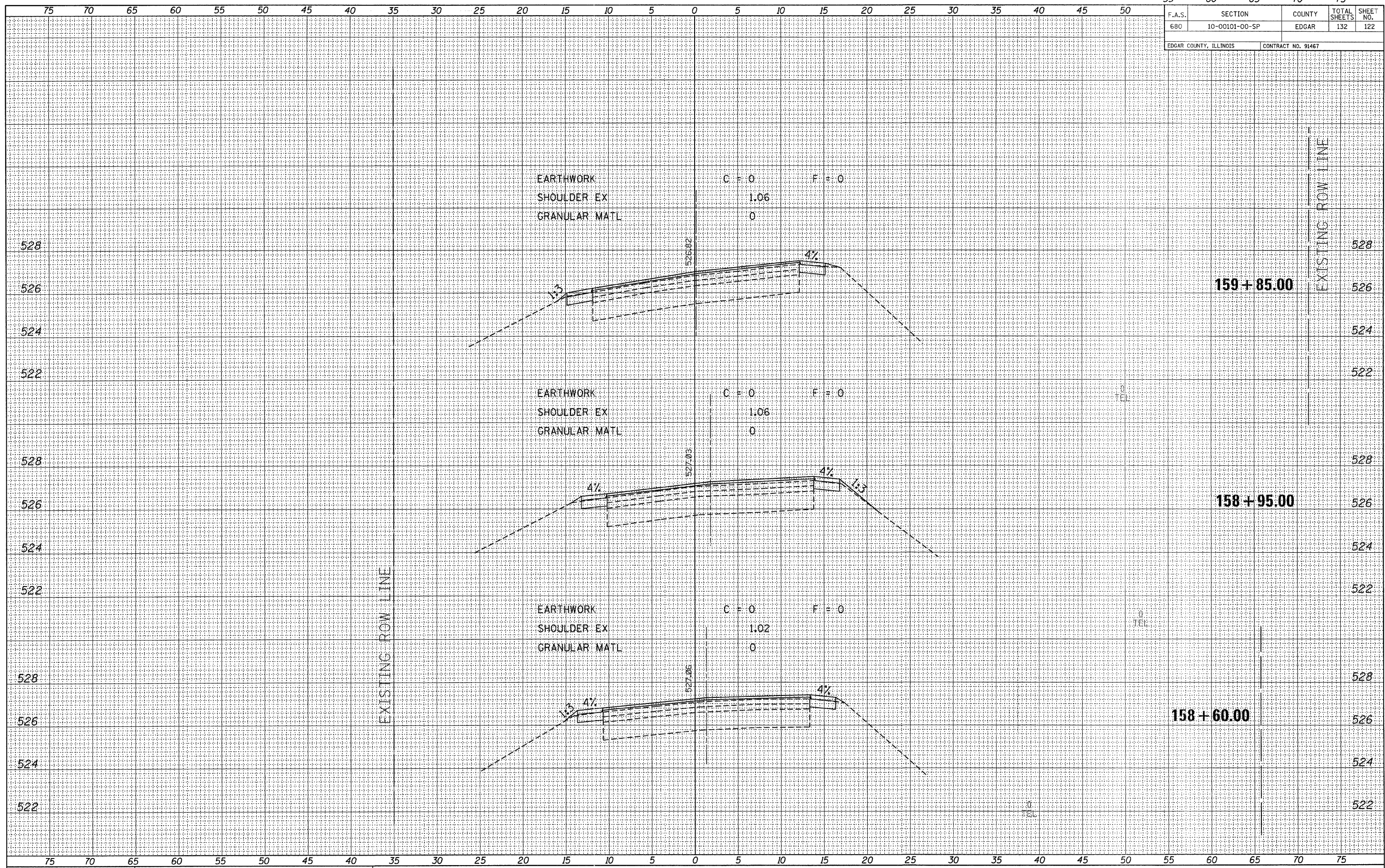


DATE	BY
DATE	BY
DATE	BY
DATE	BY
DATE	BY

DATE	BY
DATE	BY
DATE	BY
DATE	BY
DATE	BY



FILE NAME = 118330-shh-sss.dgn
 PLOT DATE = 1/19/2012
 SCALE: 1" = 5' HORZ, 1" = 2' VERT



EDGAR COUNTY
 HIGHWAY DEPARTMENT

CROSS SECTIONS EAST OF ELBRIDGE
 STATION 158+60 TO STATION 159+85