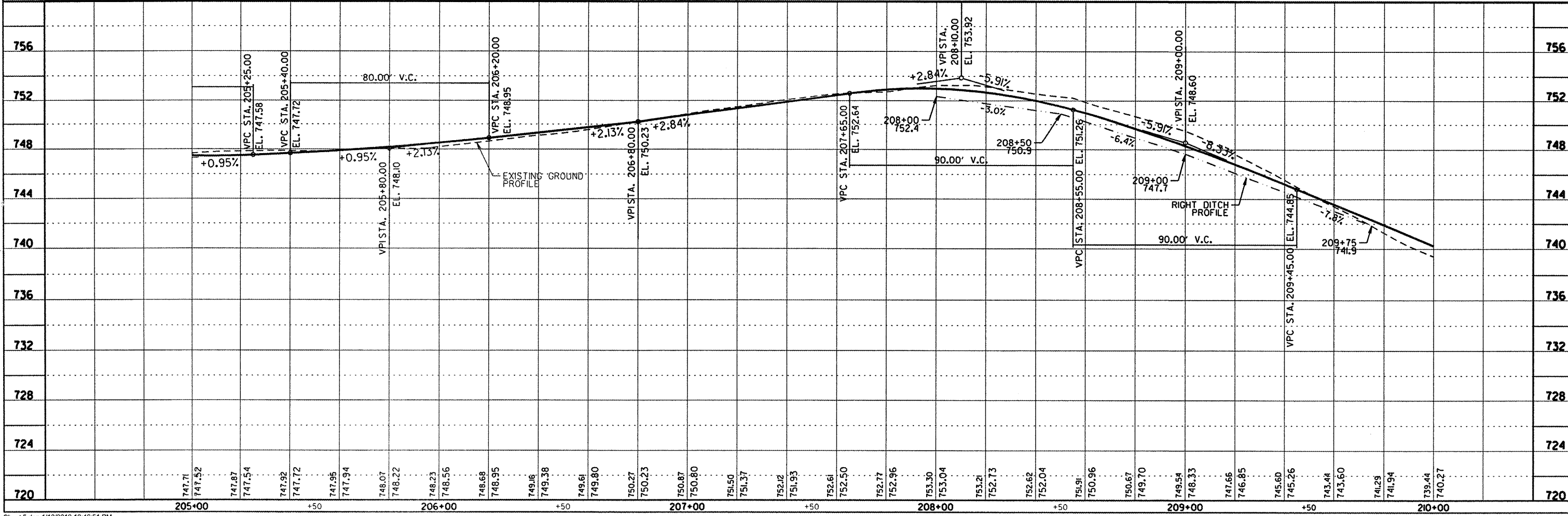
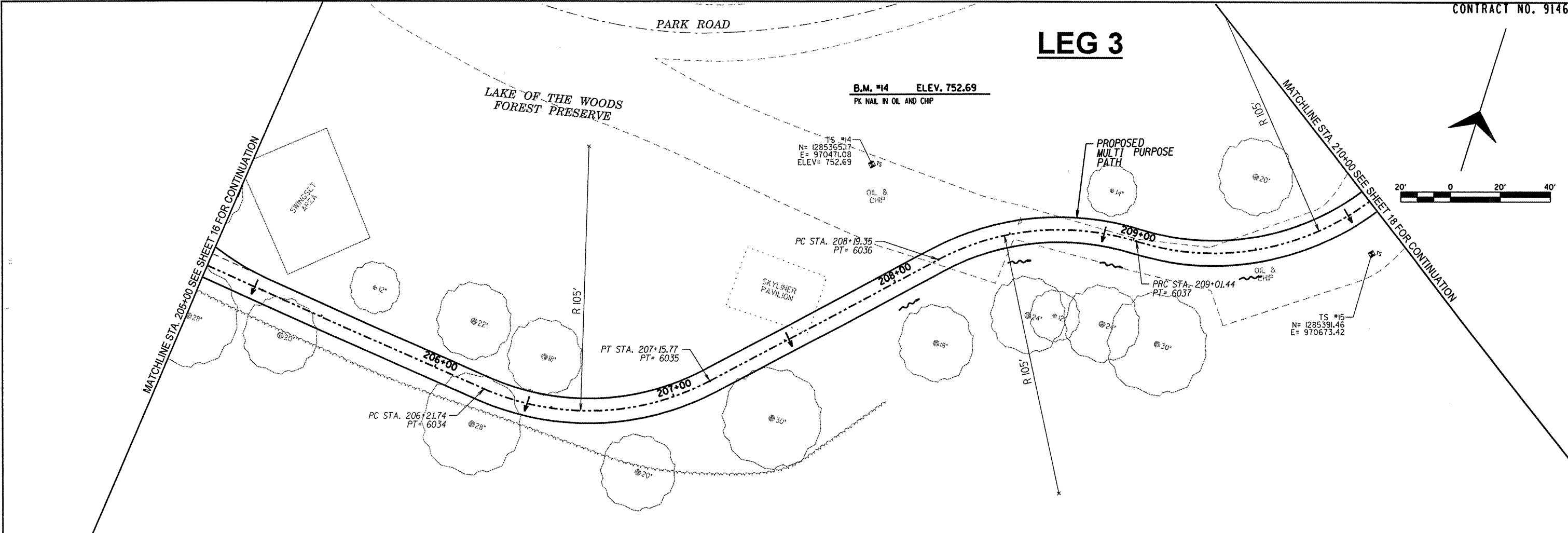


LEG 3



DESCRIPTION	
DATE	
REVISION	
PROJECT TITLE	VILLAGE OF MAHOMET & CC FOREST PRESERVE
	LAKE OF THE WOODS ROAD
	MULTI-PURPOSE PATHWAY
SHEET TITLE	PLAN AND PROFILE SHEET
Sodemann and Associates, Inc. 340 NORTH NEIL STREET POST OFFICE BOX 957 MAHOMET, ILLINOIS 61854-0957 TEL: 217-562-1688 FAX: 217-562-7922 ENGINEERING / ANALYSIS / MANAGEMENT	
DES. CHG	
CHK. MSJ	
APP. EBH	
PROJECT NO.	1009
DATE	12-12-2011
SHEET	17
OF 61 SHEETS	