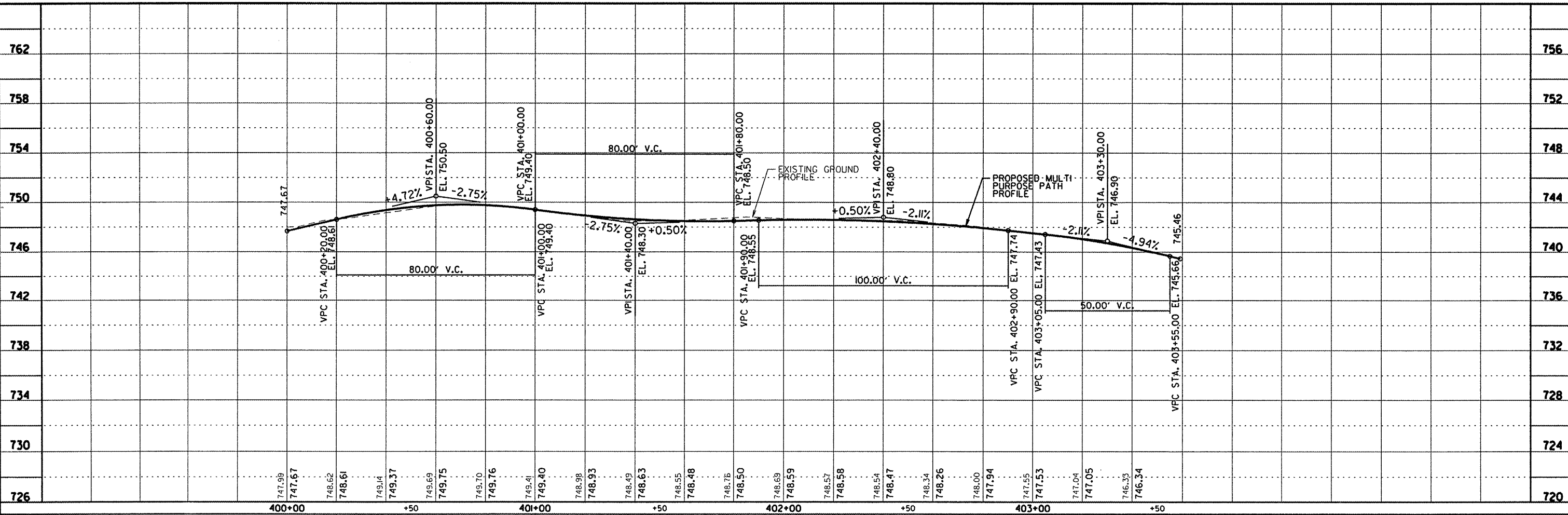
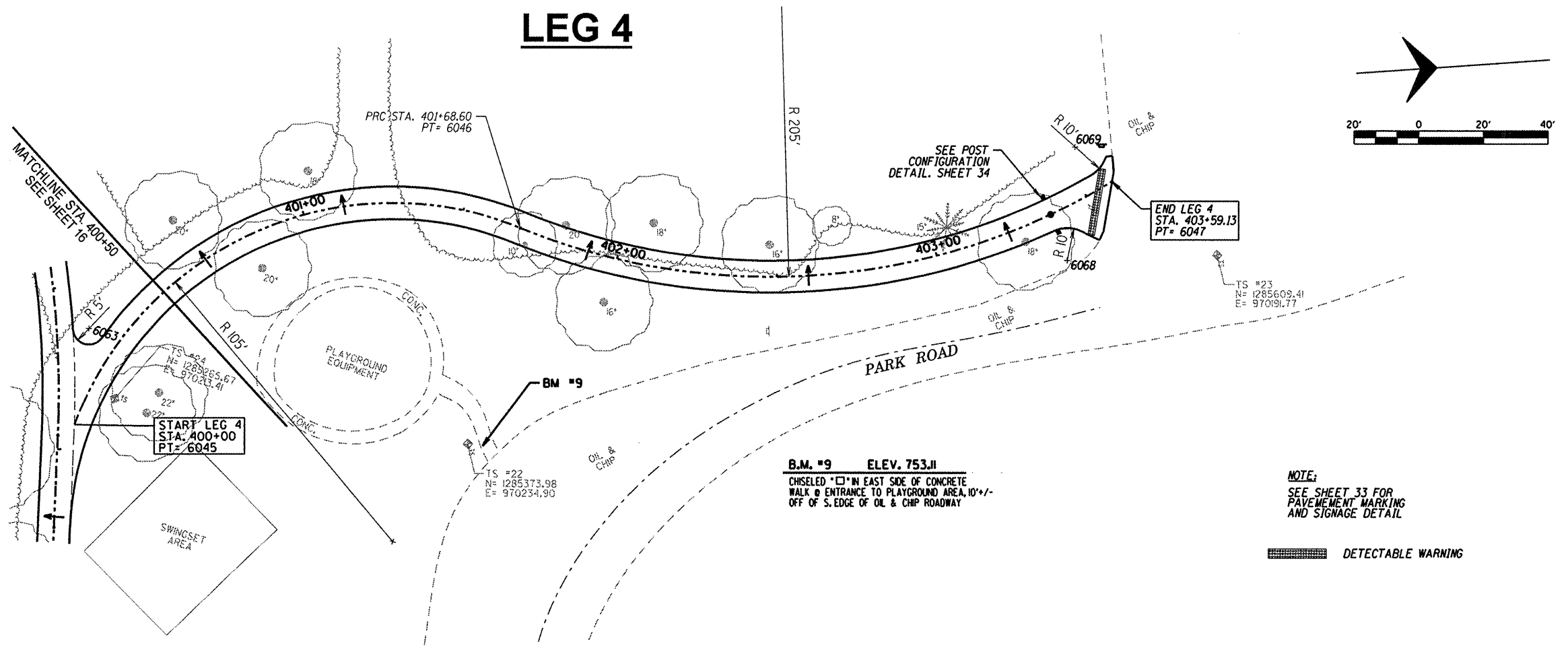


# LEG 4



**NOTE:**  
SEE SHEET 33 FOR  
PAVEMENT MARKING  
AND SIGNAGE DETAIL

DETECTABLE WARNING

**B.M. #9 ELEV. 753.11**  
CHISELED "X" IN EAST SIDE OF CONCRETE  
WALKWAY ENTRANCE TO PLAYGROUND AREA, 10' +/-  
OFF OF S. EDGE OF OIL & CHIP ROADWAY

DESCRIPTION	
DATE	
REVISION	
PROJECT TITLE	VILLAGE OF MAHOMET & CC FOREST PRESERVE
	LAKE OF THE WOODS ROAD
	MULTI-PURPOSE PATHWAY
SHEET TITLE	PLAN AND PROFILE SHEET
Sodemann and Associates, Inc. 200 WEST 5TH STREET CHAMPAIGN, ILLINOIS 61824-0557 TEL 217 552-7688 FAX 217 552-7922 ENGINEERING / ANALYSIS / MANAGEMENT	
DES. CHG	
DRN. MSO	
CHK. EBH	
APP. SRS	
PROJECT NO.	1009
DATE	12-12-2011
SHEET	19
OF 61 SHEETS	