

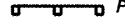
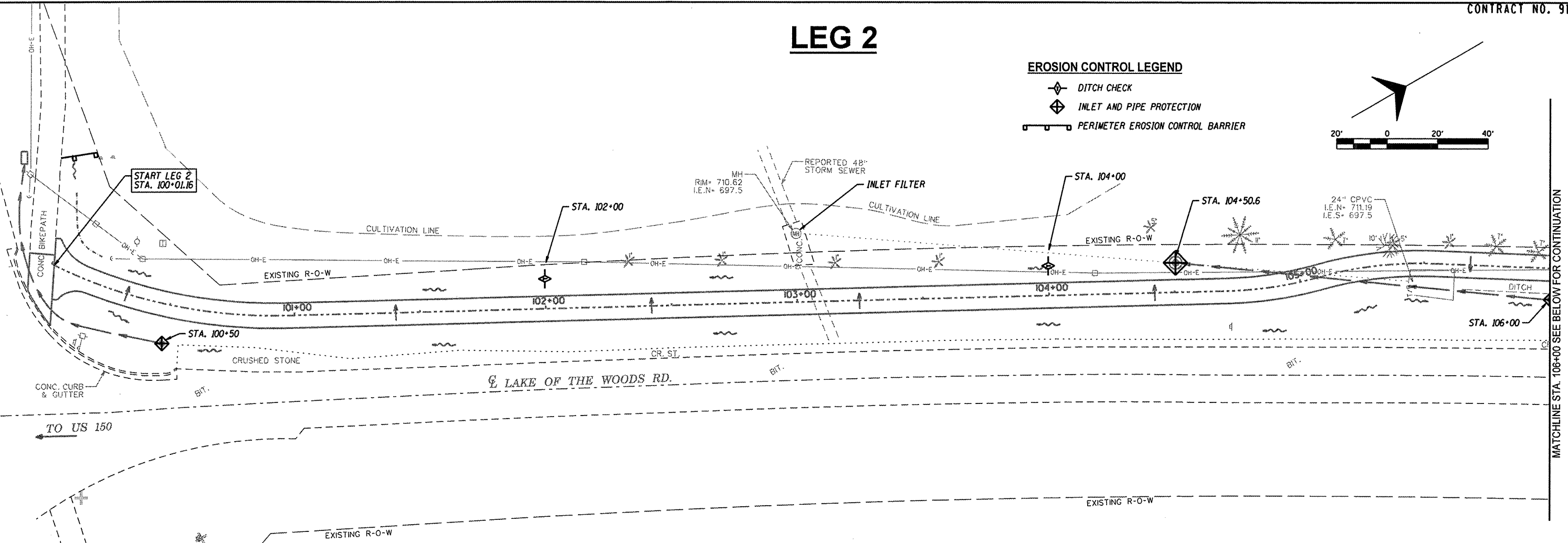


LEG 2

EROSION CONTROL LEGEND

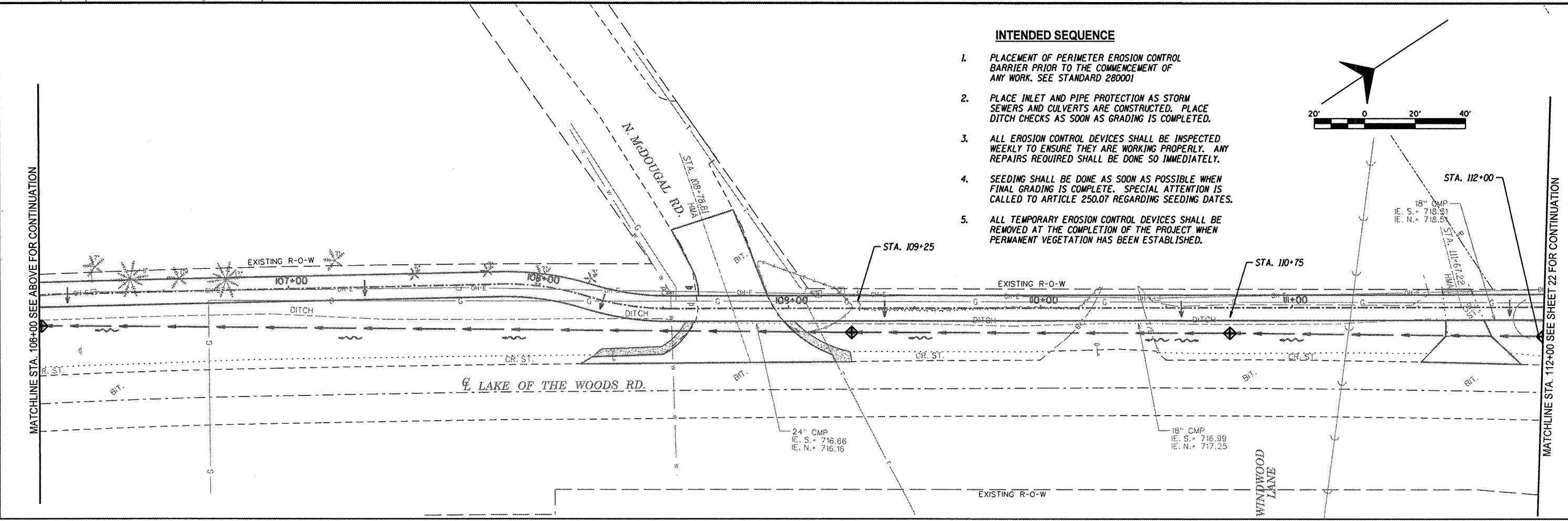
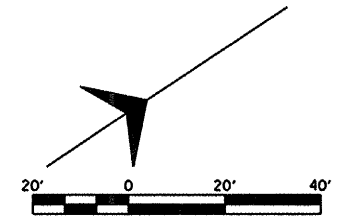
-  DITCH CHECK
-  INLET AND PIPE PROTECTION
-  PERIMETER EROSION CONTROL BARRIER



MATCHLINE STA. 106+00 SEE BELOW FOR CONTINUATION


INTENDED SEQUENCE

1. PLACEMENT OF PERIMETER EROSION CONTROL BARRIER PRIOR TO THE COMMENCEMENT OF ANY WORK. SEE STANDARD 280001
2. PLACE INLET AND PIPE PROTECTION AS STORM SEWERS AND CULVERTS ARE CONSTRUCTED. PLACE DITCH CHECKS AS SOON AS GRADING IS COMPLETED.
3. ALL EROSION CONTROL DEVICES SHALL BE INSPECTED WEEKLY TO ENSURE THEY ARE WORKING PROPERLY. ANY REPAIRS REQUIRED SHALL BE DONE SO IMMEDIATELY.
4. SEEDING SHALL BE DONE AS SOON AS POSSIBLE WHEN FINAL GRADING IS COMPLETE. SPECIAL ATTENTION IS CALLED TO ARTICLE 250.07 REGARDING SEEDING DATES.
5. ALL TEMPORARY EROSION CONTROL DEVICES SHALL BE REMOVED AT THE COMPLETION OF THE PROJECT WHEN PERMANENT VEGETATION HAS BEEN ESTABLISHED.



MATCHLINE STA. 106+00 SEE ABOVE FOR CONTINUATION

MATCHLINE STA. 112+00 SEE SHEET 22 FOR CONTINUATION

	DESCRIPTION	DATE	REVISION
<p>PROJECT TITLE VILLAGE OF MAHOMET & CC FOREST PRESERVE LAKE OF THE WOODS ROAD MULTI-PURPOSE PATHWAY</p>			
<p>SHEET TITLE EROSION CONTROL SHEET</p>			
			
<p>Sodermann and Associates, Inc. 340 NORTH MEL STREET CHAMPAIGN, ILLINOIS 61824-0557 TEL 217.352.7888 FAX 217.352.7922 ENGINEERING / ANALYSIS / MANAGEMENT</p>			
DES. CMO	SPN. MSD	CHK. EBH	APP. SRS
PROJECT NO. 10109			
DATE 12-12-2011			
21			
OF 61 SHEETS			