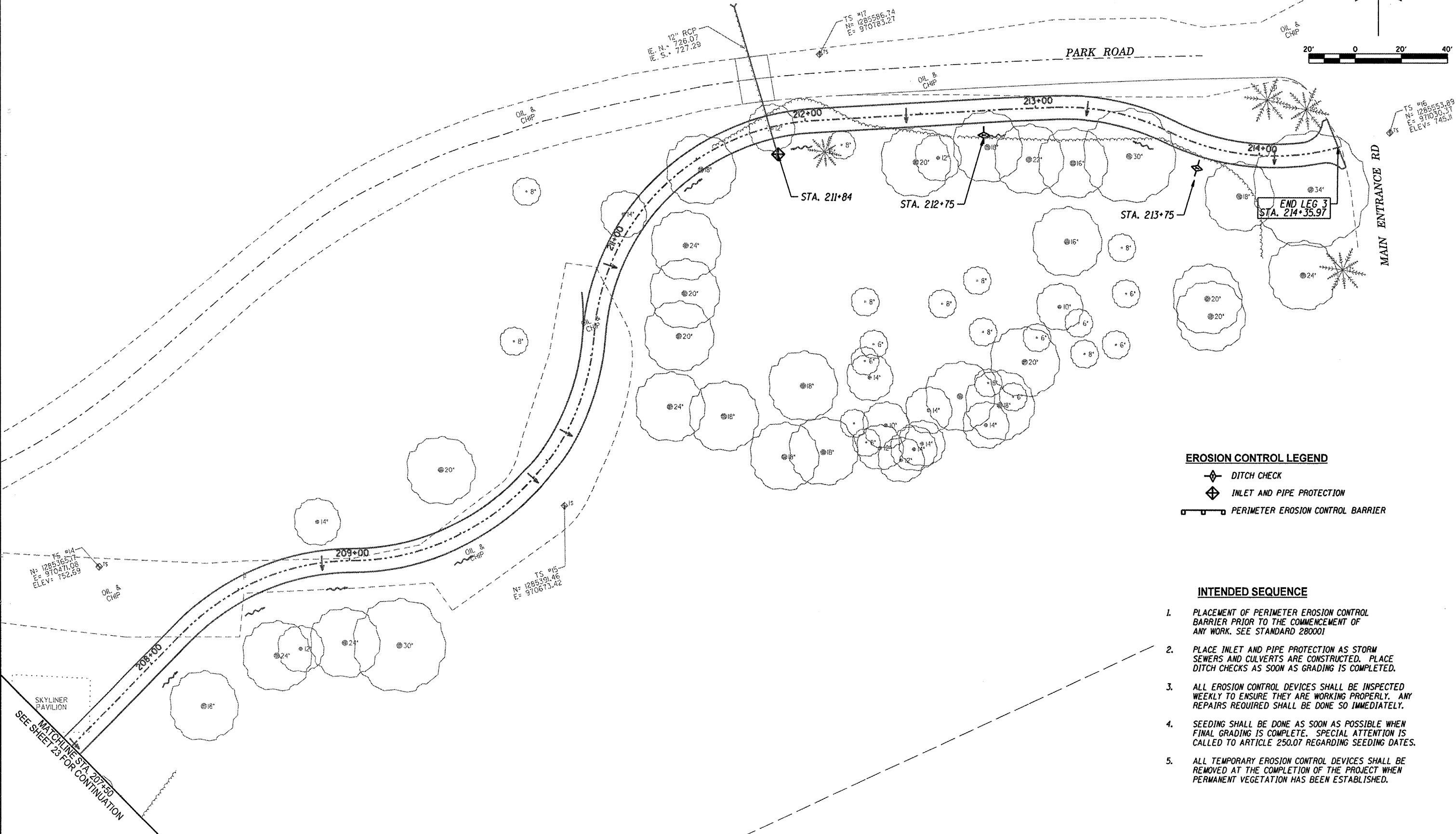
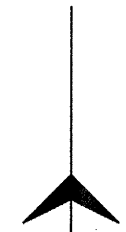


LEG 3

LAKE OF THE WOODS
FOREST PRESERVE



- EROSION CONTROL LEGEND**
- DITCH CHECK
 - INLET AND PIPE PROTECTION
 - PERIMETER EROSION CONTROL BARRIER

- INTENDED SEQUENCE**
1. PLACEMENT OF PERIMETER EROSION CONTROL BARRIER PRIOR TO THE COMMENCEMENT OF ANY WORK. SEE STANDARD 280001
 2. PLACE INLET AND PIPE PROTECTION AS STORM SEWERS AND CULVERTS ARE CONSTRUCTED. PLACE DITCH CHECKS AS SOON AS GRADING IS COMPLETED.
 3. ALL EROSION CONTROL DEVICES SHALL BE INSPECTED WEEKLY TO ENSURE THEY ARE WORKING PROPERLY. ANY REPAIRS REQUIRED SHALL BE DONE SO IMMEDIATELY.
 4. SEEDING SHALL BE DONE AS SOON AS POSSIBLE WHEN FINAL GRADING IS COMPLETE. SPECIAL ATTENTION IS CALLED TO ARTICLE 250.07 REGARDING SEEDING DATES.
 5. ALL TEMPORARY EROSION CONTROL DEVICES SHALL BE REMOVED AT THE COMPLETION OF THE PROJECT WHEN PERMANENT VEGETATION HAS BEEN ESTABLISHED.

	DESCRIPTION	DATE	REVISION		
<p>PROJECT TITLE VILLAGE OF MAHOMET & CC FOREST PRESERVE</p> <p>PROJECT TITLE LAKE OF THE WOODS ROAD MULTI-PURPOSE PATHWAY</p> <p>SHEET TITLE EROSION CONTROL SHEET</p>					
<p>Sodemann and Associates, Inc. 340 NORTH DICK STREET CHICAGO, ILLINOIS 60624-0857 TEL 214 352-7688 FAX 214 352-1922 ENGINEERING / ANALYSIS / MANAGEMENT</p>					
DES. CHD	DRN. MSO	CHK. EBH	APP. SRS		
PROJECT NO. 1009					
DATE 12-12-2011					
SHEET					
24					
OF 61 SHEETS					